

THIS MAP WAS PREPARED FOR ASSESSMENT PURPOSE ONLY.

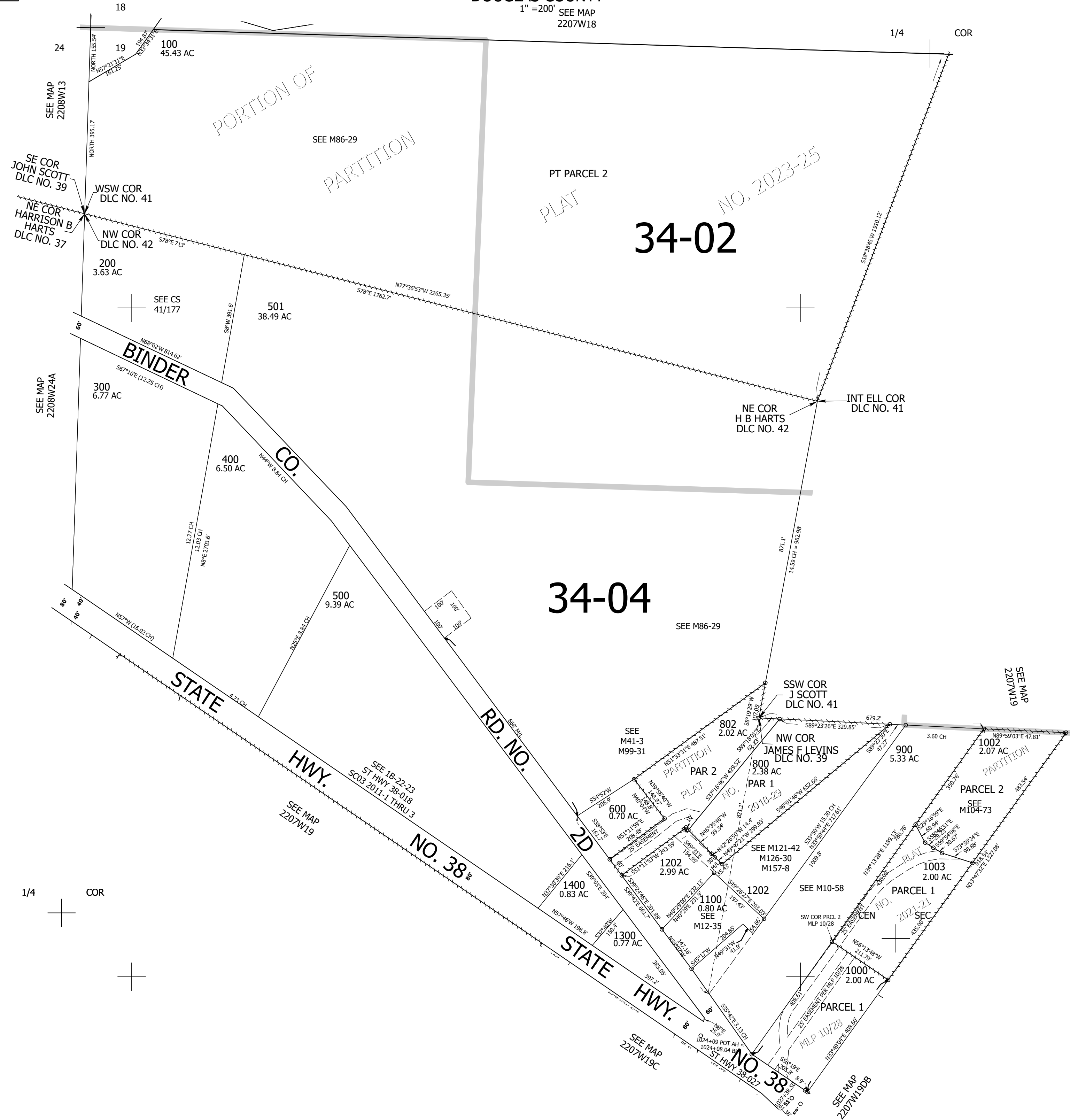
Upper Left:
123°35'15"W 43°39'1"N
4104256E 737966N ft

NW1/4 SEC.19 T.22S. R.07W. W.M. DOUGLAS COUNTY

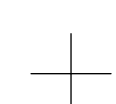
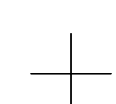
1" = 200' SEE MAP
2207W18

Date Exported 2023-08-10

CANCELLED NOS:
700 1001 502
801 1200 1201
101



1/4 COR



Lower Right:
123°34'20"W 43°38'28"N
4108180E 734488N ft