

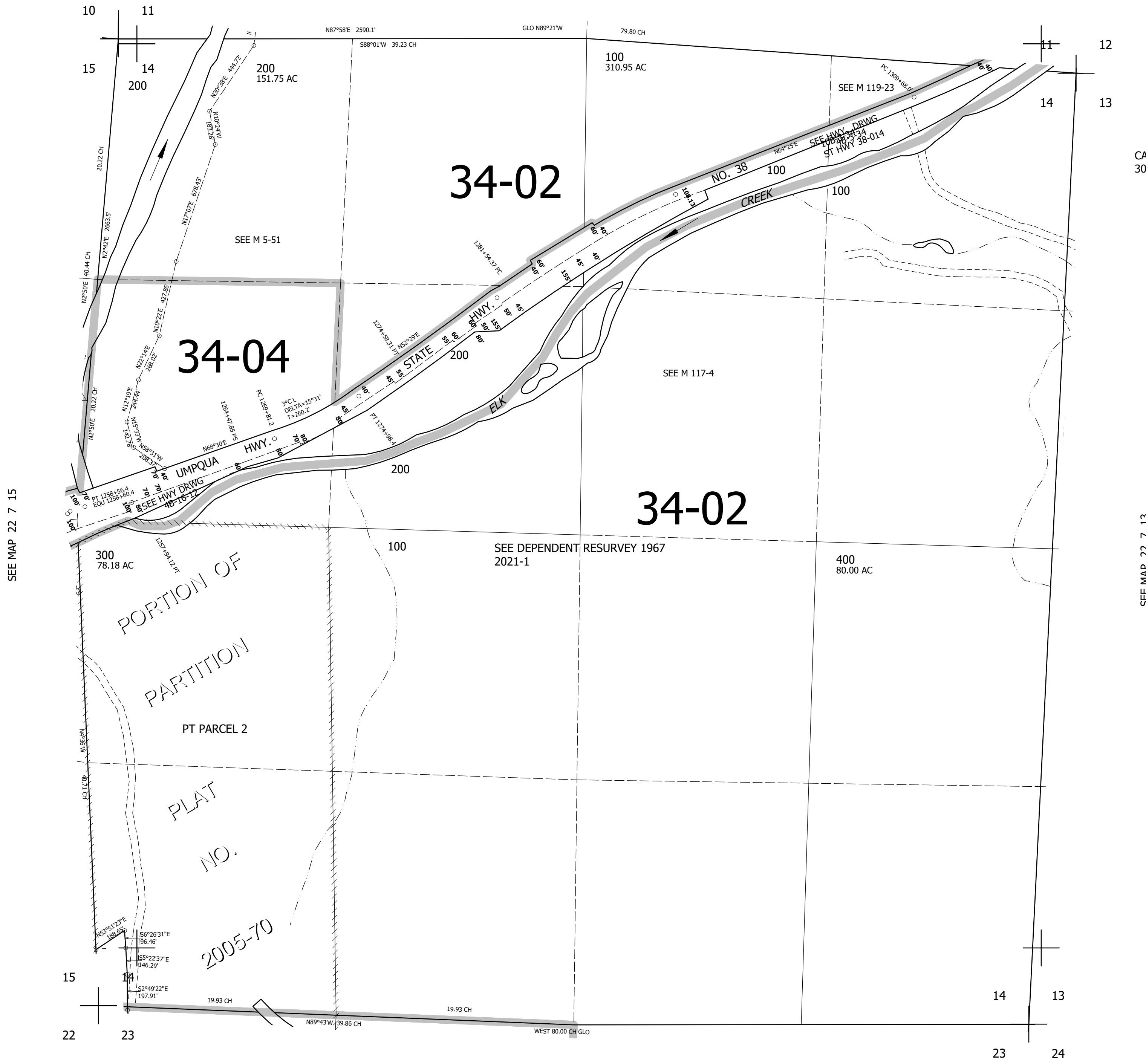
THIS MAP WAS PREPARED FOR ASSESSMENT PURPOSE ONLY.

SEC.14 T.22S. R.7W. W.M.
DOUGLAS COUNTY
1" = 400'

REVISED ON
7-25-05

22 7 14

SEE MAP 22 7 00



CANCELLED NO'S
301

SEE MAP 22 7 15

SEE MAP 22 7 13

SEE DEPENDENT RESURVEY 1967
2021-1

737,000

SEE MAP 22 7 00

4,131,000

22 7 14