

THIS MAP WAS PREPARED FOR ASSESSMENT PURPOSE ONLY.

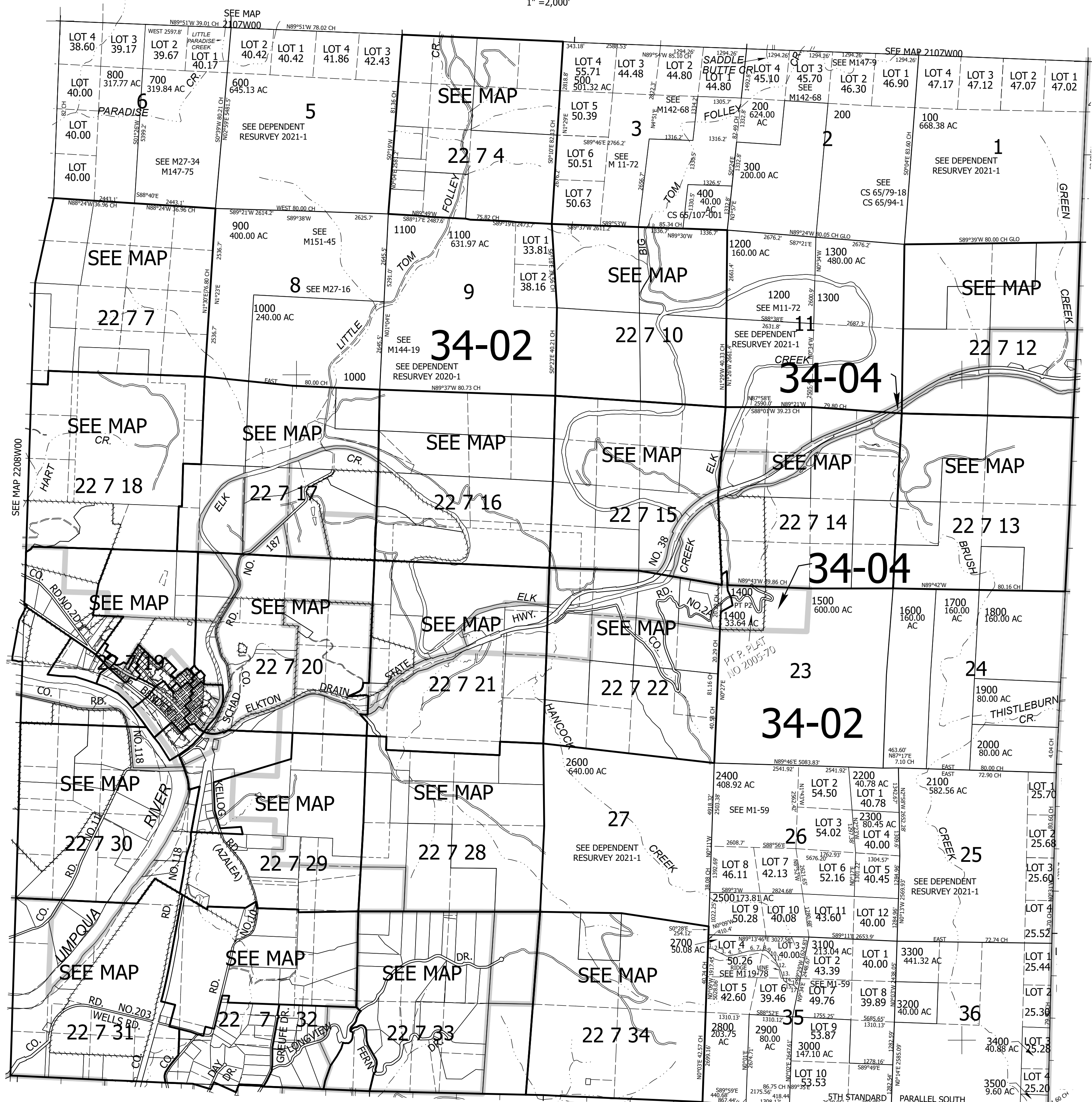
Upper Left:
123°36'8"W 43°41'47"N
4100989E 754907N ft

T.22S. R.07W. W.M.
DOUGLAS COUNTY
1" = 2,000'

Date Exported 2024-01-29

CANCELLED NOS:
300M1 700M1 900M1
1600M1 1800M1 2000M1
2200M1 2500M1 2700M1
2800M1 3000M1 3200M1
3400M1 1401 2701
2801

TAXLOT 2700
1. S89°26'28"E 142.66'
2. S59°46'45"E 173.14'
3. S67°19'35"E 307.49'
4. N78°32'49"E 244.37'
5. N72°48'57"E 426.99'
6. N85°18'34"E 196.12'
7. N82°52'17"E 220.00'
8. S45°53'01"E 127.46'
9. S40°43'02"E 140.48'
10. S40°37'27"E 173.30'
11. S38°42'05"E 136.72'
12. S28°56'12"E 325.08'
13. S18°35'23"E 284.29'
14. S56°41'32"E 162.04'
15. S76°51'59"E 173.55'
16. S45°49'22"E 107.18'
17. S50°47'14"E 81.86'



SEE MAP
2206W00

SEE MAP
2307W00

Lower Right:
123°26'58"W 43°36'18"N
4140236E 720131N ft