

THIS MAP WAS PREPARED FOR ASSESSMENT PURPOSE ONLY.

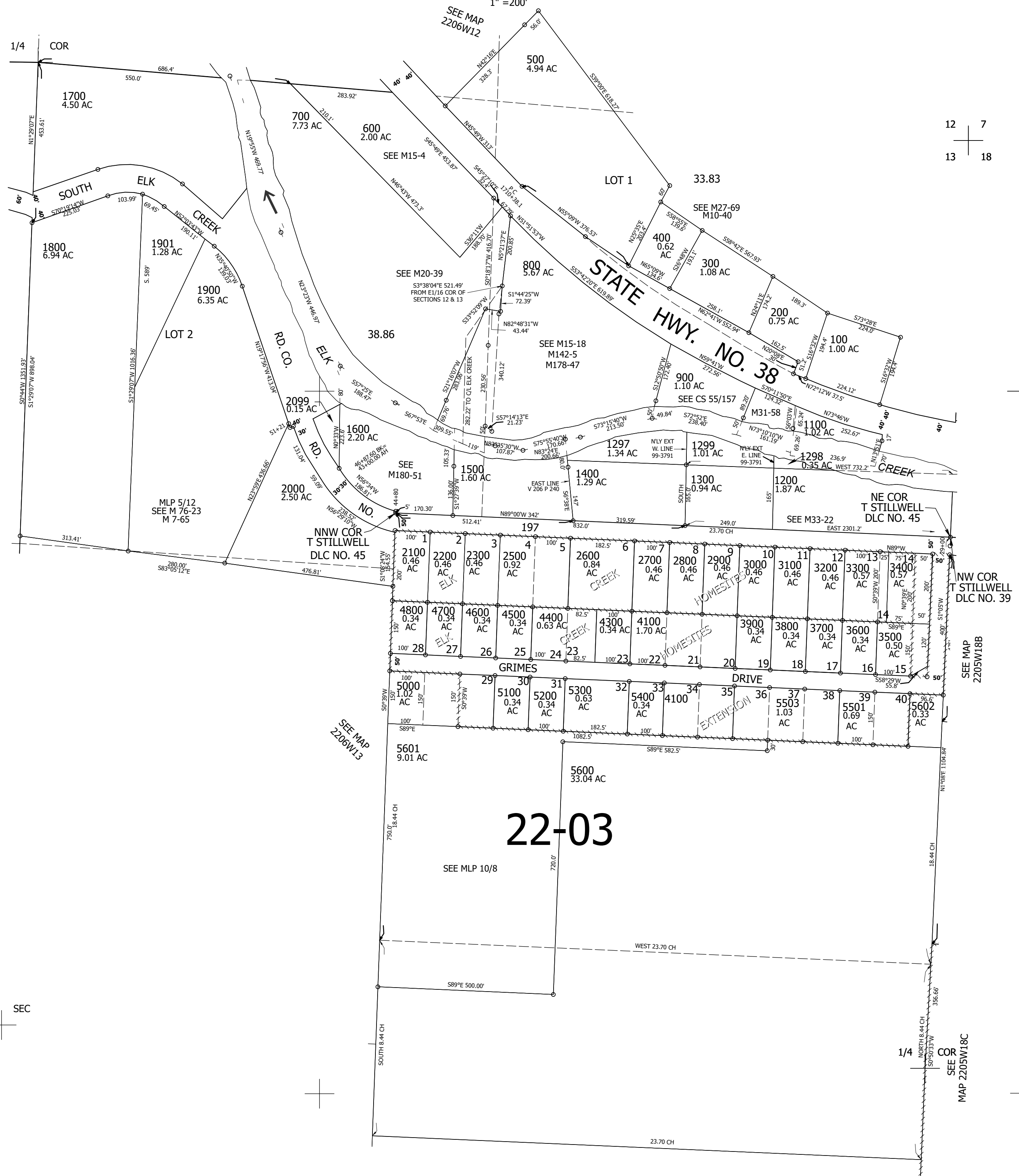
Upper Left:
123°21'37"W 43°39'54"N
4164580E 741178N ft

NE1/4 SEC.13 T.22S. R.06W. W.M.
DOUGLAS COUNTY
1" = 200'

Date Exported 2025-03-26

220613A

CANCELLED NOS:
5502 1000 2400
4301 5603 801
702 4000 4200
5500 4900



12 7
13 18

CEN SEC

SEE MAP 2205W18C

220613A

Lower Right:
123°20'42"W 43°39'21"N
4168505E 737700N ft