

THIS MAP WAS PREPARED FOR ASSESSMENT PURPOSE ONLY.

Upper Left:
123°22'23"W 43°40'45"N
4161338E 746531N ft

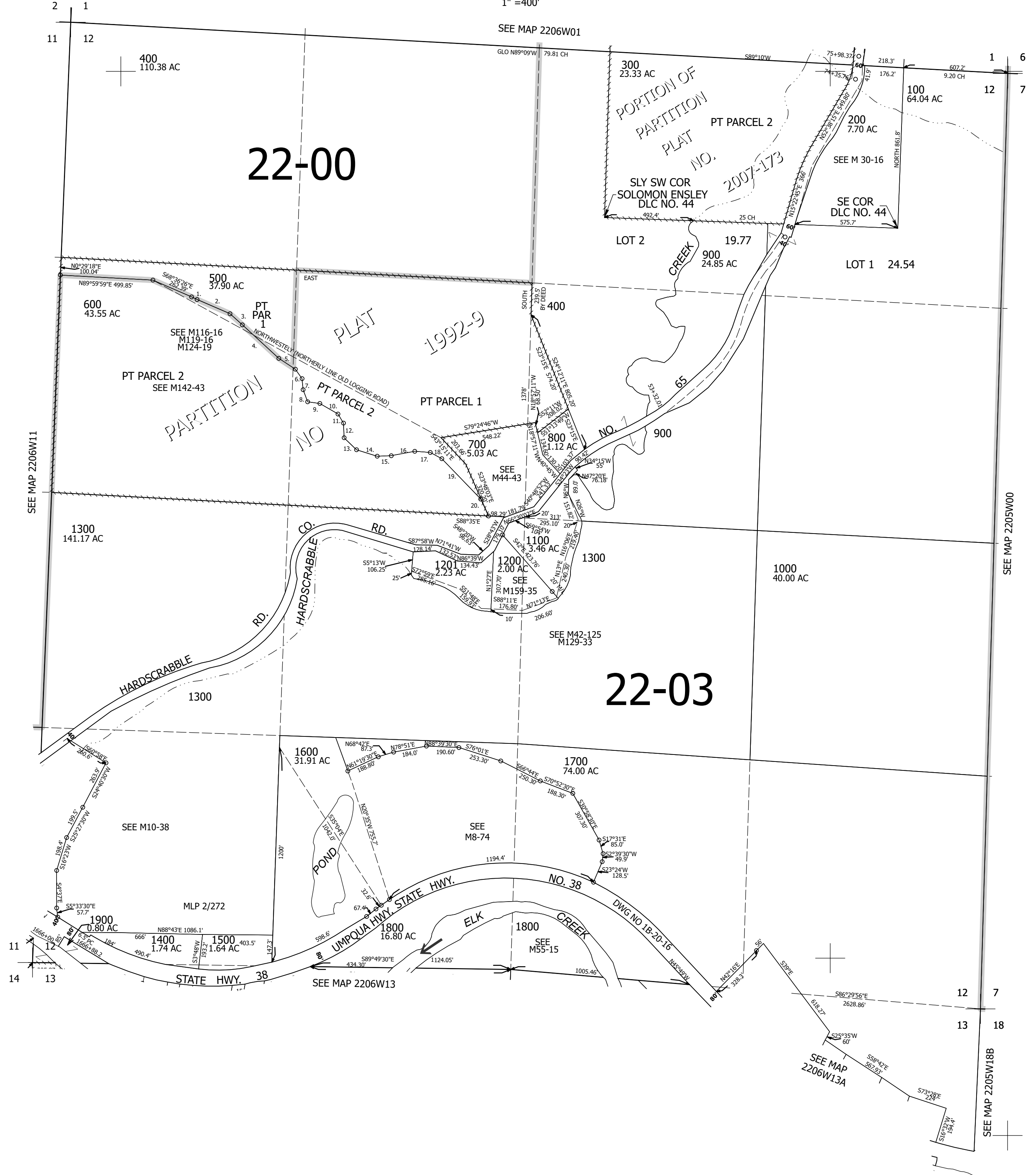
SEC.12 T.22S. R.06W. W.M.
DOUGLAS COUNTY
1" = 400'

Date Exported 2025-03-24

220612

CANCELLED NOS:
501 601 101
201 901 1202

- PARCELS 500 & 600
1. S66°36'39"E 34.35'
 2. S68°44'18"E 202.12'
 3. S50°16'17"E 93.5'
 4. S49°31'52"E 279.33'
 5. S58°55'10"E 111.78'
 6. S37°36'18"E 65.08'
 7. S7°24'30"E 62.65'
 8. S22°36'32"E 72.9'
 9. S84°17'59"E 68.49'
 10. S61°51'48"E 118.25'
 11. S33°37'48"E 59.85'
 12. S4°37'48"E 82.69'
 13. S48°02'19"E 97.22'
 14. S74°46'39"E 122.08'
 15. N86°00'37"E 79.43'
 16. N37°12'08"E 134.69'
 17. S87°48'07"E 87.87'
 18. S63°48'45"E 73.77'
 19. S46°16'41"E 316.22'
 20. S27°43'13"E 109.48'



SEE MAP 2205W18B

SEE MAP 2206W13A

SEE MAP 2206W13B

220612

Lower Right:
123°20'33"W 43°39'39"N
4169188E 739575N ft