

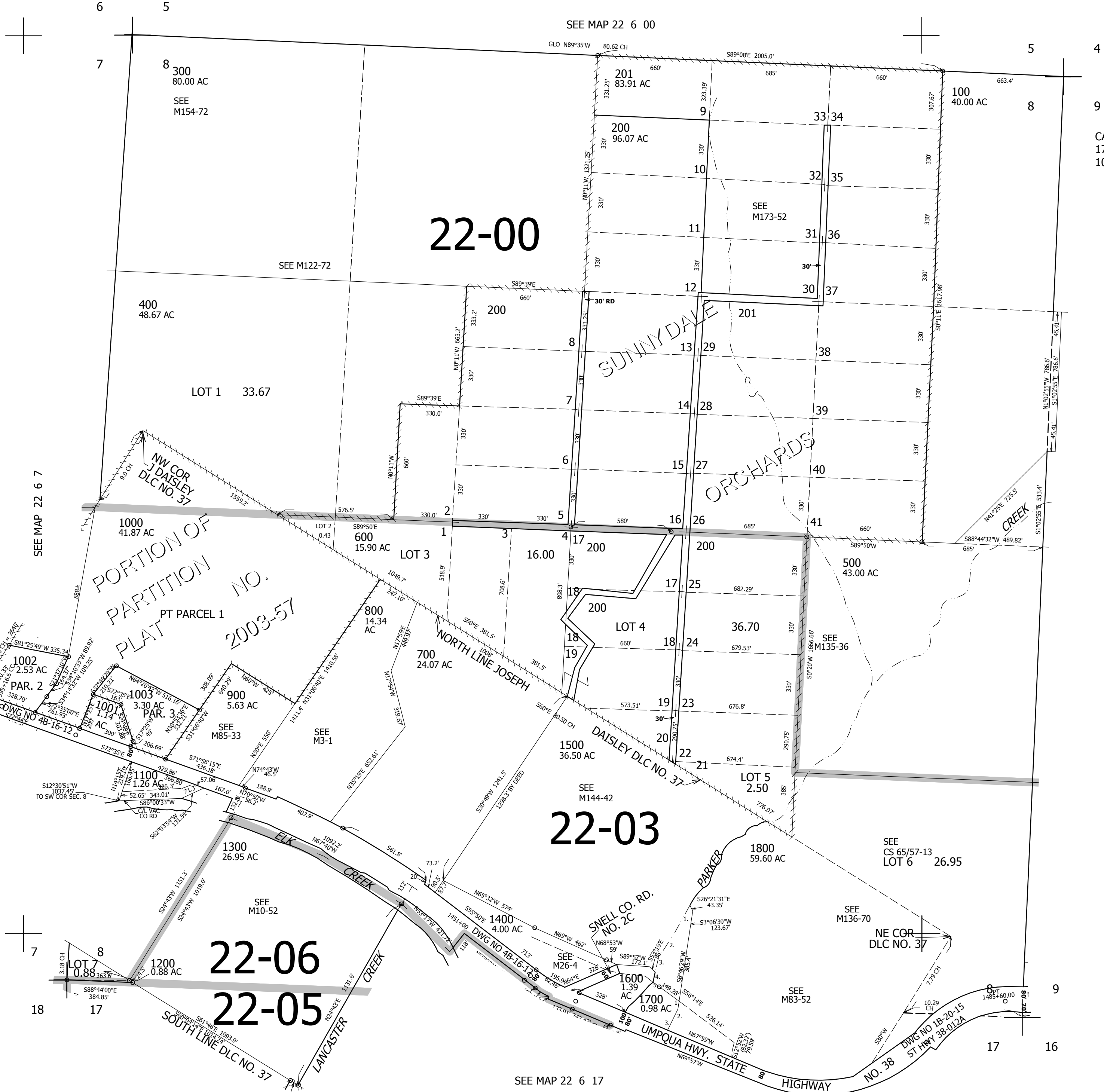
THIS MAP WAS PREPARED FOR ASSESSMENT PURPOSE ONLY.

SEC.8 T.22S. R.6W. W.M.
DOUGLAS COUNTY

REVISED ON
12-8-16

22 6 8

1" = 400'



CANCELLED NO'S
1701 1801 1200M1
101 1004

PARCEL 1500

1. S25°25'15"W 182.68'
2. S28°39'43"W 178.89'
3. S13°43'48"W 85.57'
4. S2°22'48"W 40.51'
5. S60°32'E 33.52'

PARCEL 1700

1. S6°46'29"W 37.32'
2. S23°59'21"W 82.34'
3. S24°53'15"W 93.52'

SEE MAP 22 6 9

742,000

22 6 8

4,146,000

SEE MAP 22 6 17

SEE MAP 22 6 7

SEE MAP 22 6 00

SEE M122-72

SEE M173-52

SUNNYDALE

ORCHARDS

PORTION OF
PARTITION OF
PLAT NO.
2003-57
PT PARCEL 1

22-00

22-03

22-06

22-05

1002
2.53 AC
PAR. 2

1003
3.30 AC
PAR. 3

1100
1.26 AC

1300
26.95 AC

1400
4.00 AC

1500
36.50 AC

1600
1.39 AC

1700
0.98 AC

1800
59.60 AC

1900
1.26 AC

1000
41.87 AC

LOT 1
33.67

LOT 2
0.43

LOT 3
15.90 AC

LOT 4
36.70

LOT 5
2.50

LOT 6
26.95

LOT 7
0.88 AC

LOT 8
0.88 AC

LOT 9
0.88 AC

800
14.34 AC

700
24.07 AC

600
15.90 AC

500
43.00 AC

400
48.67 AC

300
80.00 AC

200
96.07 AC

201
83.91 AC

100
40.00 AC

300
80.00 AC

1000
41.87 AC

900
5.63 AC

800
14.34 AC

700
24.07 AC

600
15.90 AC

500
43.00 AC

400
48.67 AC

300
80.00 AC

200
96.07 AC

201
83.91 AC

100
40.00 AC

1002
2.53 AC
PAR. 2

1003
3.30 AC
PAR. 3

1100
1.26 AC

1300
26.95 AC

1400
4.00 AC

1500
36.50 AC

1600
1.39 AC

1700
0.98 AC

1800
59.60 AC

1900
1.26 AC

1000
41.87 AC

900
5.63 AC

800
14.34 AC

700
24.07 AC

600
15.90 AC

500
43.00 AC

400
48.67 AC

300
80.00 AC

200
96.07 AC

201
83.91 AC

100
40.00 AC

1002
2.53 AC
PAR. 2

1003
3.30 AC
PAR. 3

1100
1.26 AC

1300
26.95 AC

1400
4.00 AC

1500
36.50 AC

1600
1.39 AC

1700
0.98 AC

1800
59.60 AC

1900
1.26 AC

1000
41.87 AC

900
5.63 AC

800
14.34 AC

700
24.07 AC

600
15.90 AC

500
43.00 AC

400
48.67 AC

300
80.00 AC

200
96.07 AC

201
83.91 AC

100
40.00 AC

1002
2.53 AC
PAR. 2

1003
3.30 AC
PAR. 3

1100
1.26 AC

1300
26.95 AC

1400
4.00 AC

1500
36.50 AC

1600
1.39 AC

1700
0.98 AC

1800
59.60 AC

1900
1.26 AC

1000
41.87 AC

900
5.63 AC

800
14.34 AC

700
24.07 AC

600
15.90 AC

500
43.00 AC

400
48.67 AC

300
80.00 AC

200
96.07 AC

201
83.91 AC

100
40.00 AC

1002
2.53 AC
PAR. 2

1003
3.30 AC
PAR. 3

1100
1.26 AC

1300
26.95 AC

1400
4.00 AC

1500
36.50 AC

1600
1.39 AC

1700
0.98 AC

1800
59.60 AC

1900
1.26 AC

1000
41.87 AC

900
5.63 AC

800
14.34 AC

700
24.07 AC

600
15.90 AC

500
43.00 AC

400
48.67 AC

300
80.00 AC

200
96.07 AC

201
83.91 AC

100
40.00 AC

1002
2.53 AC
PAR. 2

1003
3.30 AC
PAR. 3

1100
1.26 AC

1300
26.95 AC

1400
4.00 AC

1500
36.50 AC

1600
1.39 AC

1700
0.98 AC

1800
59.60 AC

1900
1.26 AC

1000
41.87 AC

900
5.63 AC

800
14.34 AC

700
24.07 AC

600
15.90 AC

500
43.00 AC

400
48.67 AC

300
80.00 AC

200
96.07 AC

201
83.91 AC

100
40.00 AC

1002
2.53 AC
PAR. 2

1003
3.30 AC
PAR. 3

1100
1.26 AC

1300
26.95 AC

1400
4.00 AC

1500
36.50 AC

1600
1.39 AC

1700
0.98 AC

1800
59.60 AC

1900
1.26 AC

1000
41.87 AC

900
5.63 AC

800
14.34 AC

700
24.07 AC

600
15.90 AC

500
43.00 AC

400
48.67 AC

300
80.00 AC

200
96.07 AC

201
83.91 AC

100
40.00 AC

1002
2.53 AC
PAR. 2

1003
3.30 AC
PAR. 3

1100
1.26 AC

1300
26.95 AC

1400
4.00 AC

1500
36.50 AC

1600
1.39 AC

1700
0.98 AC

1800
59.60 AC

1900
1.26 AC

1000
41.87 AC

900
5.63 AC

800
14.34 AC

700
24.07 AC

600
15.90 AC

500
43.00 AC

400
48.67 AC

300
80.00 AC

200
96.07 AC

201
83.91 AC

100
40.00 AC

1002
2.53 AC
PAR. 2

1003
3.30 AC
PAR. 3

1100
1.26 AC

1300
26.95 AC

1400
4.00 AC

1500
36.50 AC

1600
1.39 AC

1700
0.98 AC

1800
59.60 AC

1900
1.26 AC

1000
41.87 AC

900
5.63 AC

800
14.34 AC

700
24.07 AC

600
15.90 AC

500
43.00 AC

400
48.67 AC

300
80.00 AC

200
96.07 AC

201
83.91 AC

100
40.00 AC

1002
2.53 AC
PAR. 2

1003
3.30 AC
PAR. 3

1100
1.26 AC

1300
26.95 AC

1400
4.00 AC

1500
36.50 AC

1600
1.39 AC

1700
0.98 AC

1800
59.60 AC

1900
1.26 AC

1000
41.87 AC

900
5.63 AC

800
14.34 AC

700
24.07 AC

600
15.90 AC

500
43.00 AC

400
48.67 AC

300
80.00 AC

200
96.07 AC

201
83.91 AC

100
40.00 AC

1002
2.53 AC
PAR. 2

1003
3.30 AC
PAR. 3

1100
1.26 AC

1300
26.95 AC

1400
4.00 AC

1500
36.50 AC