

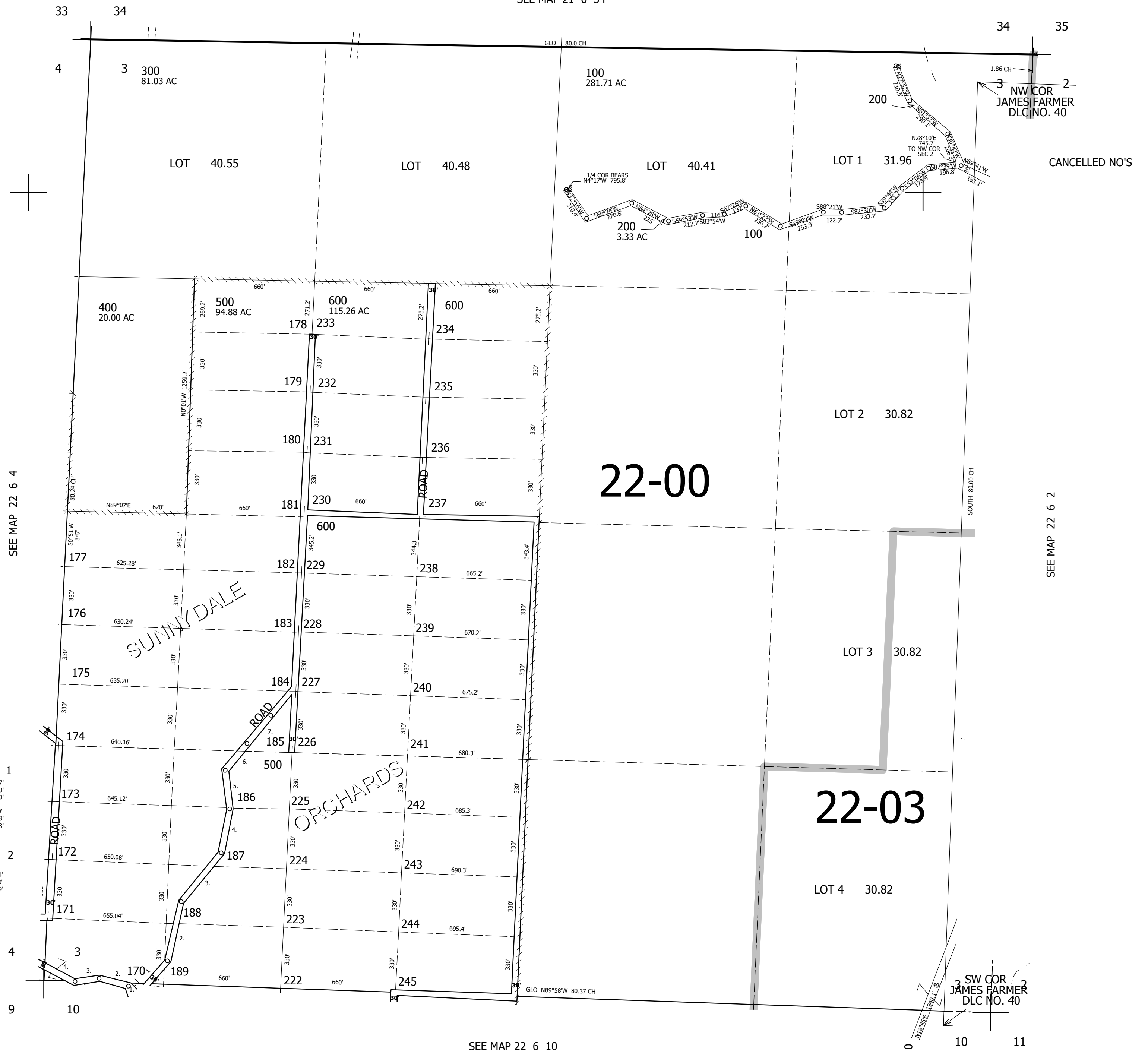
THIS MAP WAS PREPARED FOR ASSESSMENT PURPOSE ONLY.

SEC.3 T.22S. R.6W. W.M.
DOUGLAS COUNTY
1" = 400'

REVISED ON
3-5-15

22 6 3

SEE MAP 21 6 34



SEE MAP 22 6 4

SEE MAP 22 6 2

- ROAD NO. 1
1. N37°17'E 303.77'
 2. N11°42'E 340.00'
 3. N33°34'E 340.00'
 4. N9°49'E 230.00'
 5. N8°41'W 230.00'
 6. N38°42'E 433.83'
 7. N35°26'E 184.23'

- ROAD NO. 2
1. N28°16'W 75.0'
 2. N75°48'W 176.4'
 3. S78°09'W 145.0'
 4. N64°06'W 565.9'

SEE MAP 22 6 10

4,157,000

746,000
22 6 3