

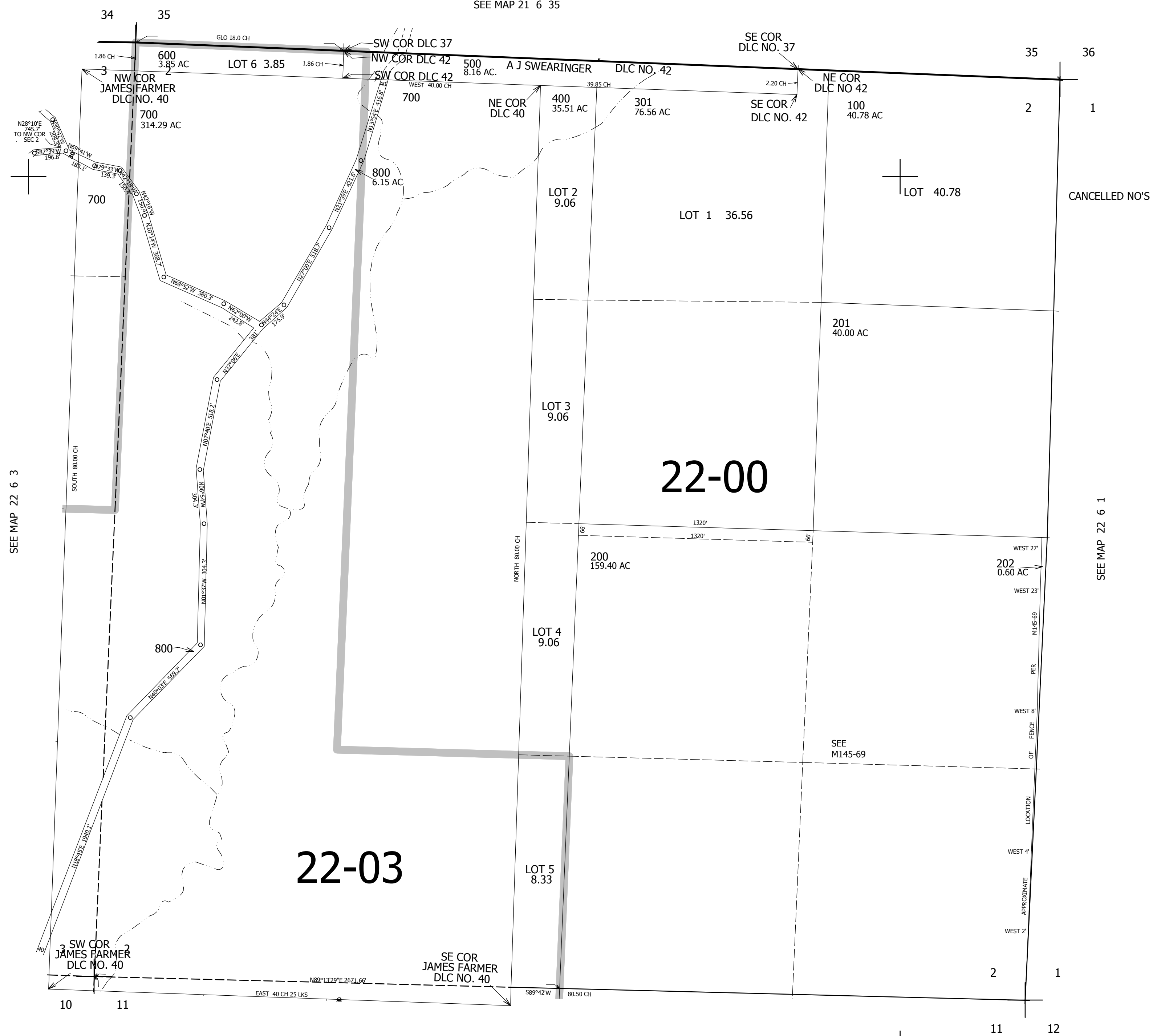
THIS MAP WAS PREPARED FOR ASSESSMENT PURPOSE ONLY.

SEC. 2 T.22S. R.6W. W.M. DOUGLAS COUNTY

REVISED ON 3-5-15

22 6 2

1" = 400'
SEE MAP 21 6 35



SEE MAP 22 6 3

SEE MAP 22 6 1

22-03

22-00

22 6 2

SEE MAP 22 6 11

746,000

4,162,000