

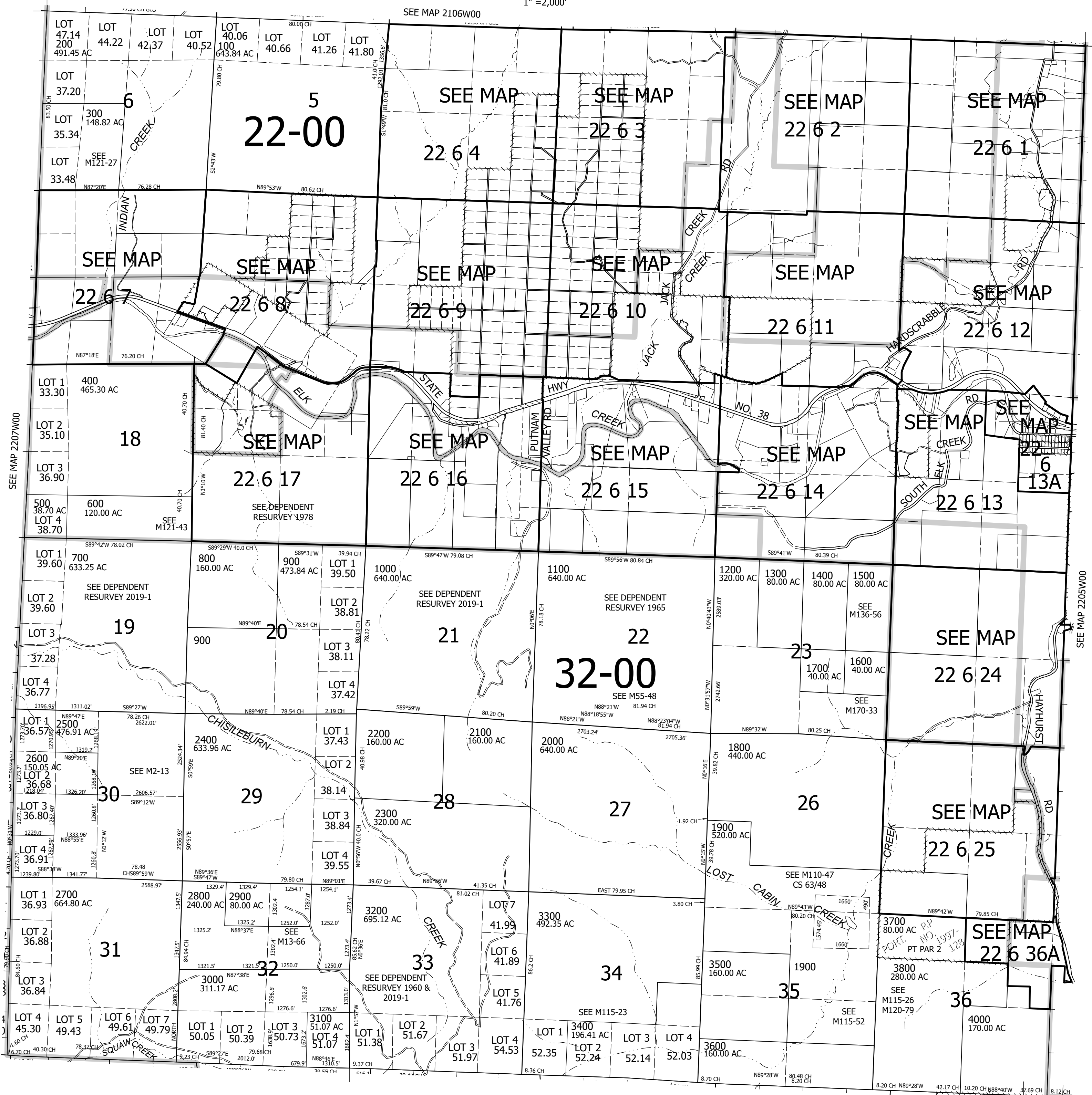
THIS MAP WAS PREPARED FOR ASSESSMENT PURPOSE ONLY.

Upper Left:
123°29'2"W 43°41'43"N
4132271E 753386N ft

T.22S. R.06W. W.M.
DOUGLAS COUNTY
1" = 2,000'

Date Exported 2024-11-19

CANCELLED NOS:
300M1 400M1
2100M1 2600M1
2800M1 3100M1
4000M1 3901 3900
3701



Lower Right:
123°19'52"W 43°36'13"N
4171518E 718609N ft