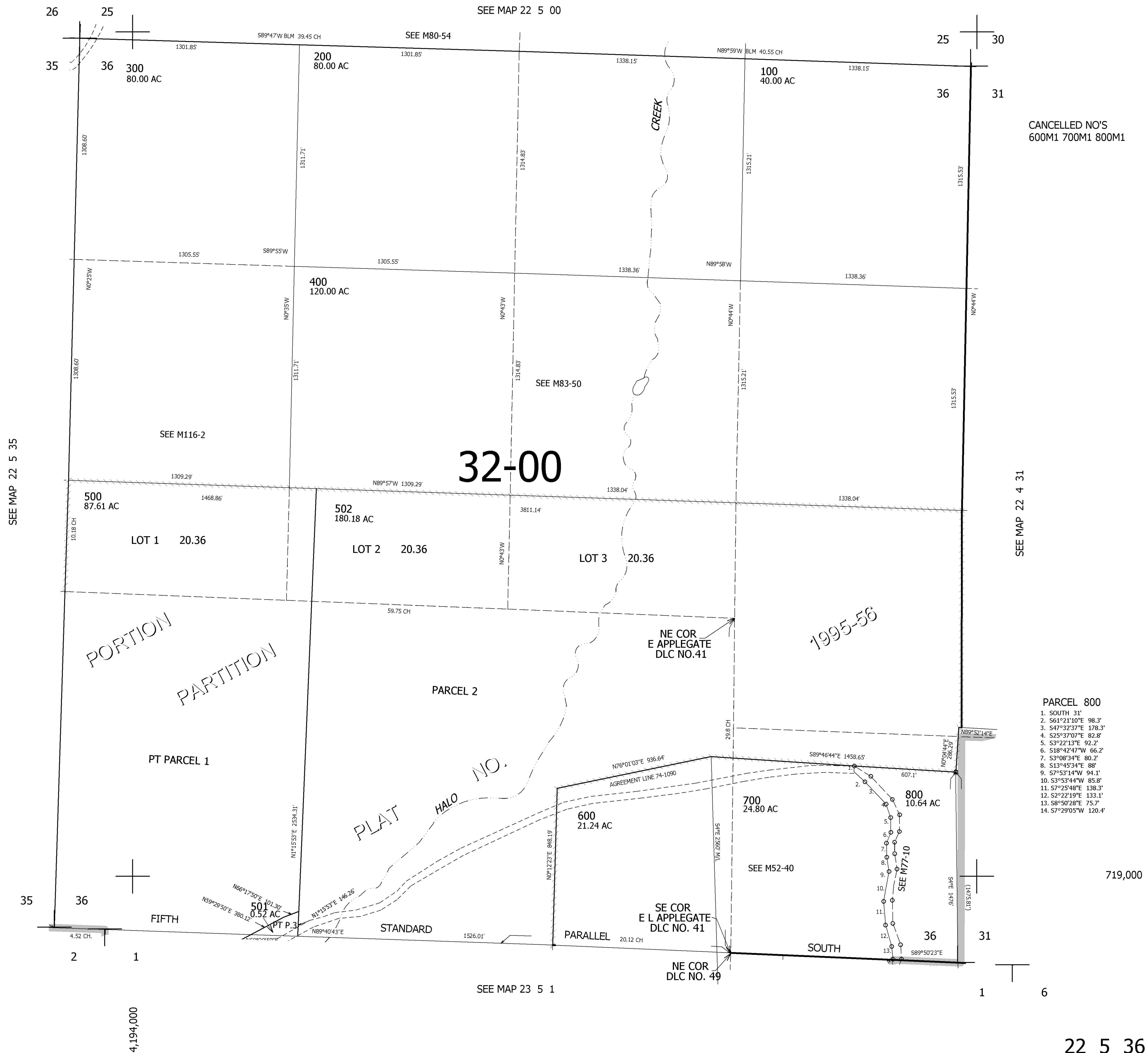


THIS MAP WAS PREPARED FOR ASSESSMENT PURPOSE ONLY.

SEC.36 T.22S. R.5W. W.M.  
DOUGLAS COUNTY  
1" = 400'

REVISED ON  
6-27-95

22 5 36



CANCELLED NO'S  
600M1 700M1 800M1

- PARCEL 800
1. SOUTH 31'
  2. S61°21'10"E 98.3'
  3. S47°32'37"E 178.3'
  4. S25°37'07"E 82.8'
  5. S3°22'13"E 92.2'
  6. S18°42'47"W 66.2'
  7. S3°08'34"E 80.2'
  8. S13°45'34"E 88'
  9. S7°53'14"W 94.1'
  10. S3°53'44"W 85.8'
  11. S7°25'48"E 138.3'
  12. S2°22'19"E 133.1'
  13. S8°50'28"E 75.7'
  14. S7°29'05"W 120.4'

719,000

22 5 36