

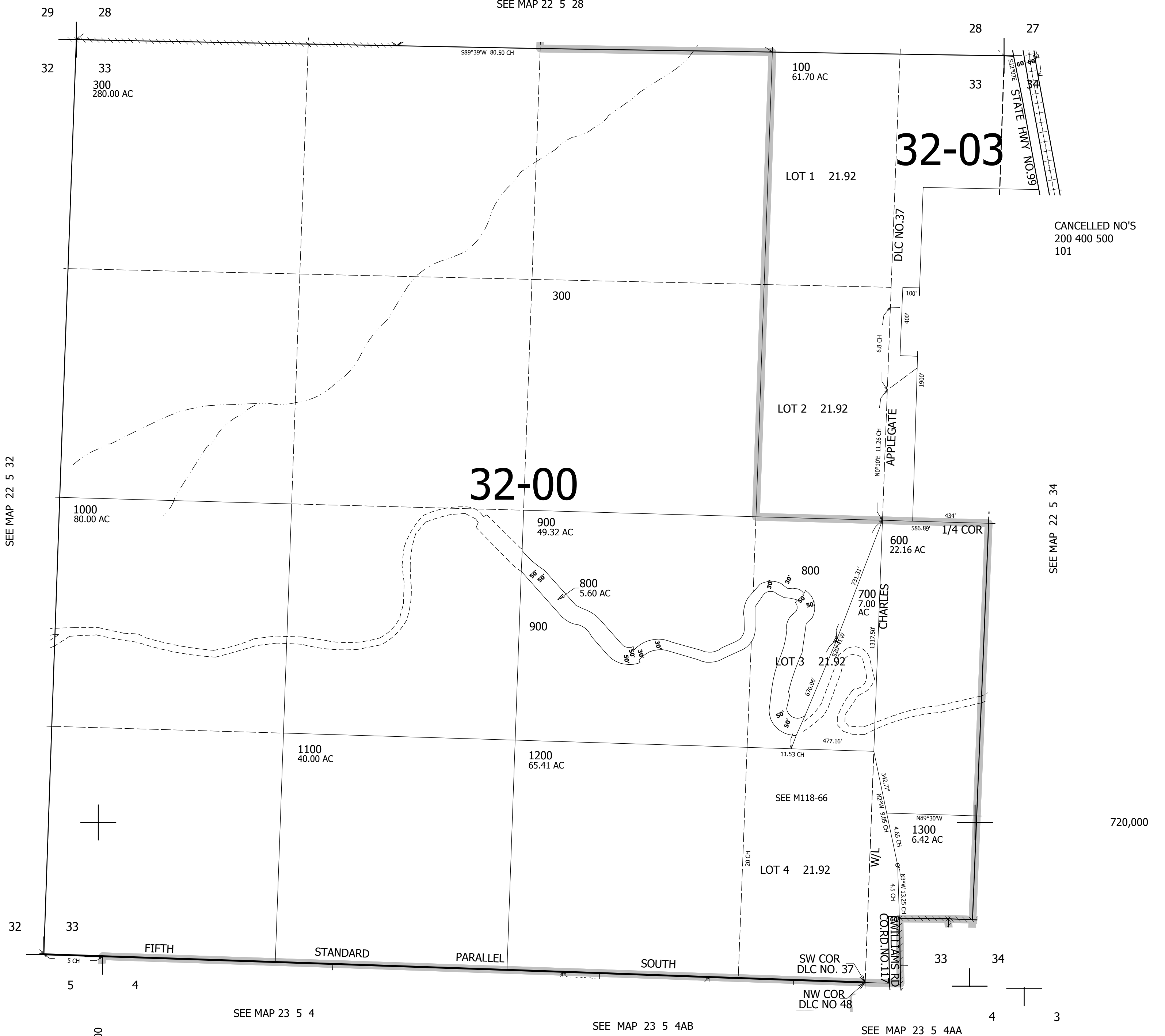
THIS MAP WAS PREPARED FOR ASSESSMENT PURPOSE ONLY.

SEC.33 T.22S. R.5W. W.M.
DOUGLAS COUNTY

1" = 400'

REVISED ON
2-29-12

22 5 33



SEE MAP 22 5 32

SEE MAP 22 5 28

SEE MAP 22 5 34

SEE MAP 23 5 4

SEE MAP 23 5 4AB

SEE MAP 23 5 4AA

720,000

4,178,000

22 5 33