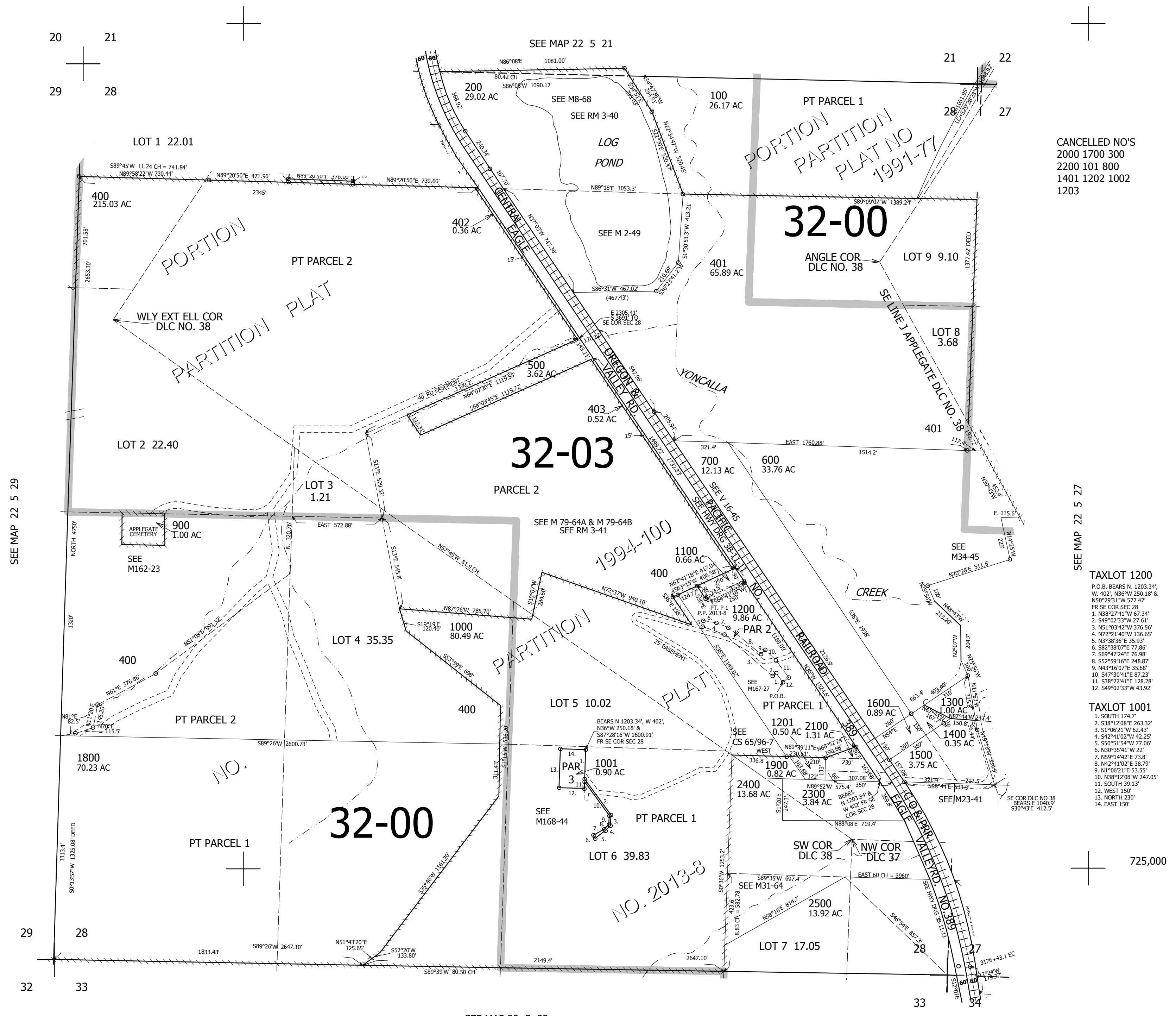


THIS MAP WAS PREPARED FOR ASSESSMENT PURPOSE ONLY.

SEC.28 T.22S. R.5W. W.M. DOUGLAS COUNTY 1" =400'

REVISED ON 3-28-19

22 5 28



CANCELLED NO'S 2000 1700 300 2200 101 800 1401 1202 1002 1203

TAXLOT 1200 P.O.B. BEARS N. 1203.34', W. 402', N36°W 250.18' & N50°29'31"W 577.47' FR SE COR SEC 28 1. N38°27'41"W 67.34' 2. S49°02'33"W 27.61' 3. N51°03'42"W 376.56' 4. N72°21'40"W 136.65' 5. N3°38'36"E 35.93' 6. S82°38'07"E 77.86' 7. S69°47'24"E 76.98' 8. S52°59'16"E 248.87' 9. N43°16'07"E 35.68' 10. S47°30'41"E 87.23' 11. S38°27'41"E 128.28' 12. S49°02'33"W 43.92'

TAXLOT 1001 1. SOUTH 174.7' 2. S38°12'08"E 263.32' 3. S1°06'21"W 62.43' 4. S42°41'02"W 42.25' 5. S50°51'54"W 77.06' 6. N30°35'41"W 22' 7. N59°14'42"E 73.8' 8. N42°41'02"E 38.79' 9. N1°06'21"E 53.55' 10. N38°12'08"W 247.05' 11. SOUTH 39.13' 12. WEST 150' 13. NORTH 230' 14. EAST 150'

725,000

SEE MAP 22 5 29

SEE MAP 22 5 27

SEE MAP 22 5 33

4,179,000

22 5 28