

THIS MAP WAS PREPARED FOR ASSESSMENT PURPOSE ONLY.

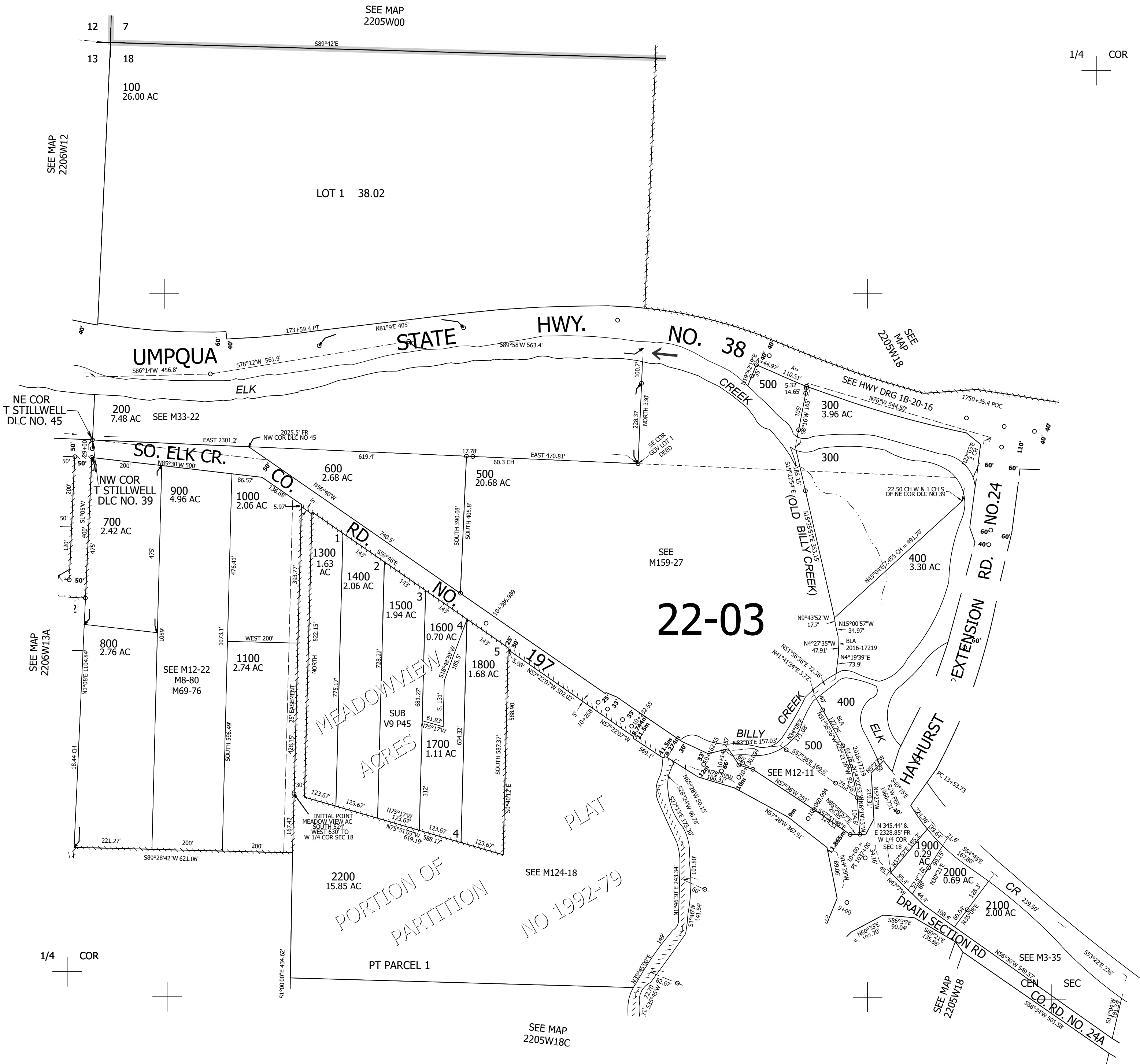
Upper Left:  
123°21'1"W 43°39'53"N  
4167182E 741024N ft

NW1/4 SEC.18 T.22S. R.05W. W.M.  
DOUGLAS COUNTY  
1" = 200'

Date Exported 2025-03-26

220518B  
Drain

CANCELLED NOS:  
1200 2201 2202



1/4 COR

1/4 COR

220518B  
Drain

Lower Right:  
123°20'6"W 43°39'20"N  
4171107E 737547N ft