

THIS MAP WAS PREPARED FOR ASSESSMENT PURPOSE ONLY.

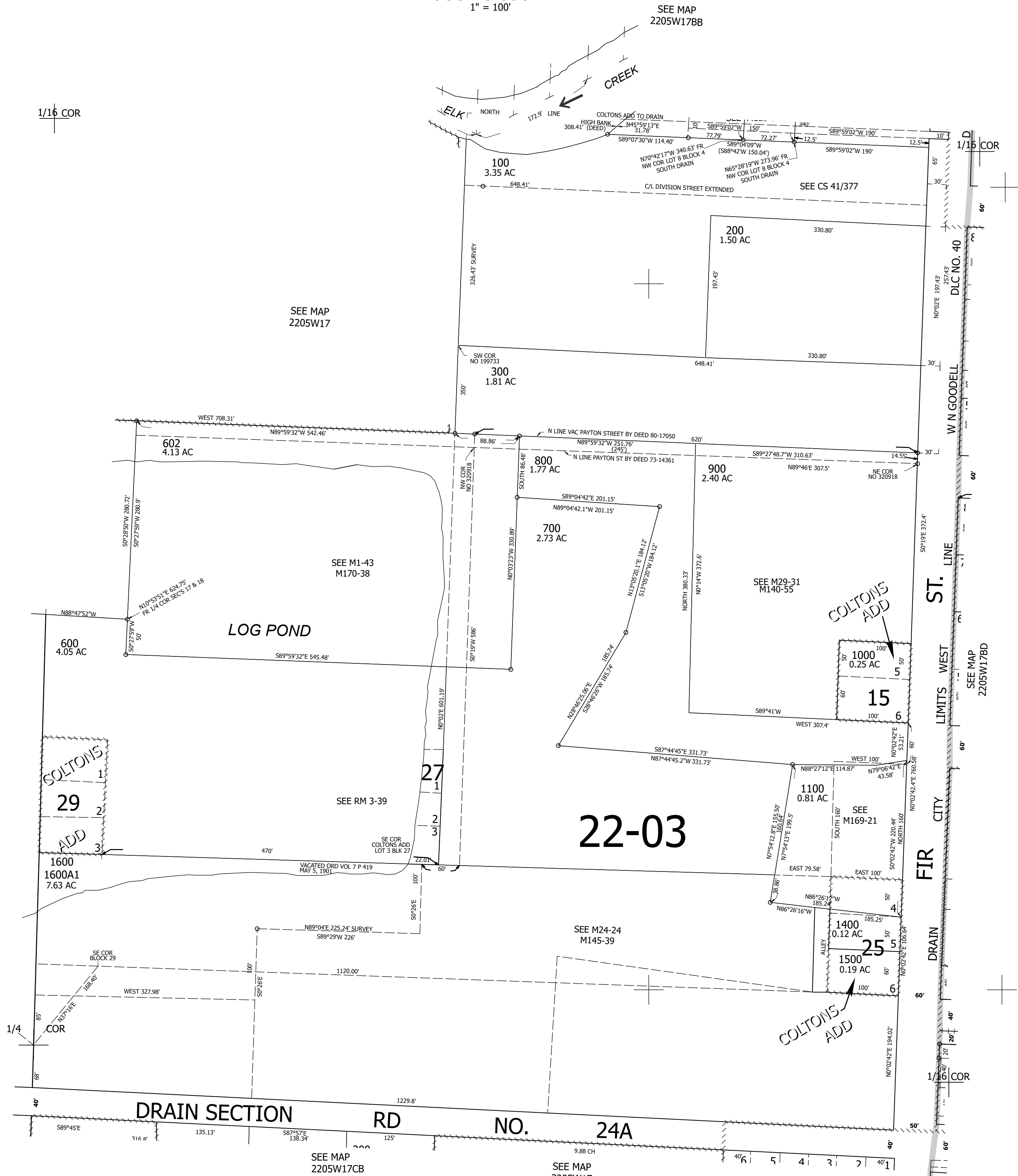
Upper Left:
123°19'44"W 43°39'39"N
4172801E 739425N ft

SW1/4 NW1/4 SEC.17 T.22S. R.05W. W.M.
DOUGLAS COUNTY
1" = 100'

Date Exported 2026-05-12

220517BC
Drain

CANCELLED NOS:
601 101 102
500 103 400
1200 1300 801
1101 701



1/16 COR

1/16 COR

1/4 COR

1/16 COR

DRAIN SECTION RD NO. 24A

SEE MAP 2205W17CB

SEE MAP 2205W17

1/16 COR

SEE MAP 2205W17BD

220517BC
Drain

Lower Right:
123°19'17"W 43°39'23"N
4174773E 737686N ft