

THIS MAP WAS PREPARED FOR ASSESSMENT PURPOSE ONLY.

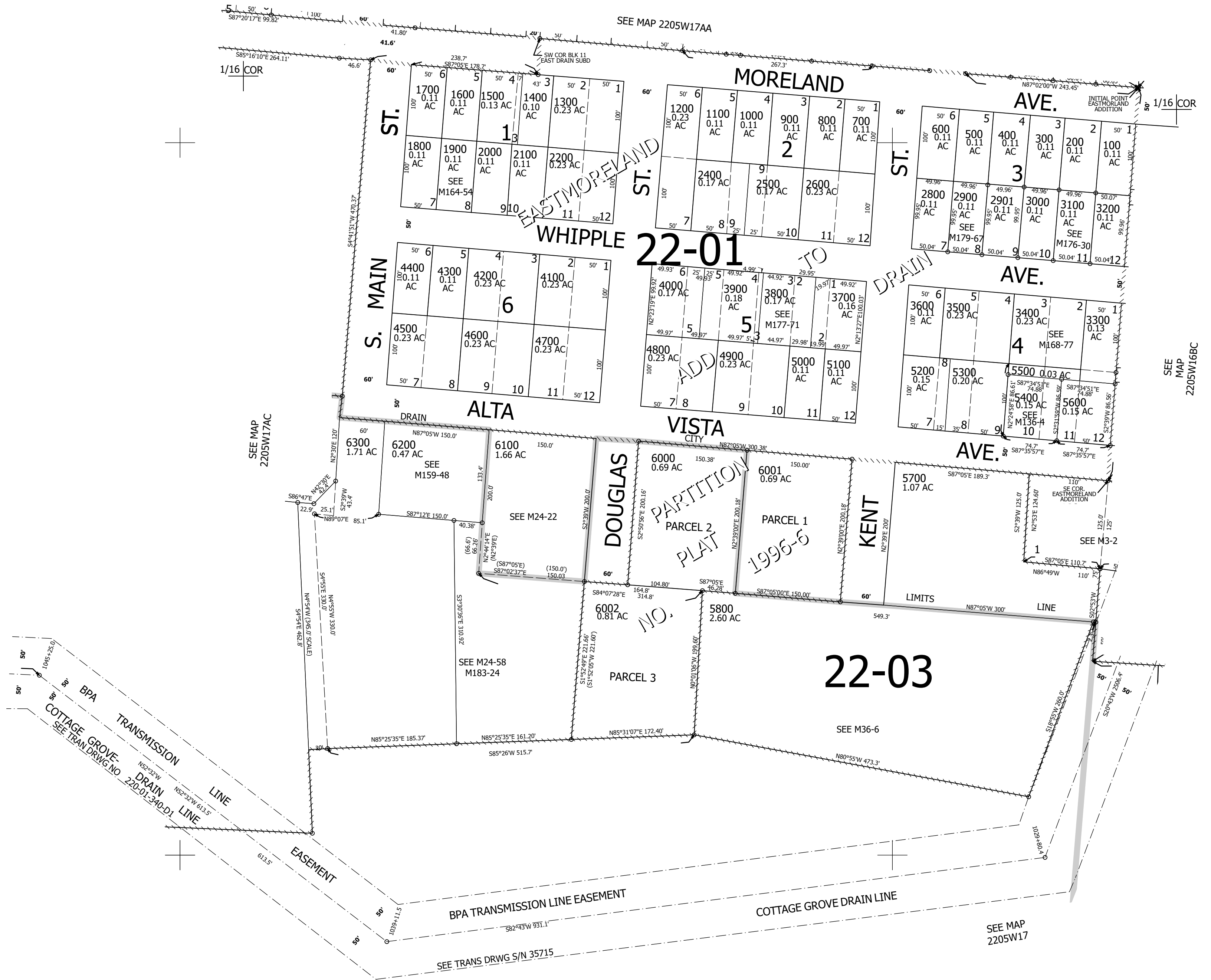
Upper Left:
123°18'53"W 43°39'39"N
4176597E 739336N ft

SE1/4 NE1/4 SEC.17 T.22S. R.05W. W.M.
DOUGLAS COUNTY
1" = 100'

Date Exported 2024-10-10

220517AD
Drain

CANCELLED NOS:
2300 2700 5900
6400 5401 5501
5502 5601 6301



1/16 COR

1/4 COR

220517AD
Drain

Lower Right:
123°18'25"W 43°39'23"N
4178572E 737598N ft