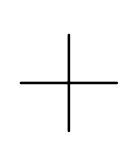


THIS MAP WAS PREPARED FOR ASSESSMENT PURPOSE ONLY.

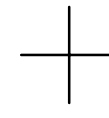
SE1/4 NW1/4 SEC.16 T.22S. R.5W. W.M.
DOUGLAS COUNTY
1" = 100'

REVISED ON
7-18-22

22 5 16BD
DRAIN



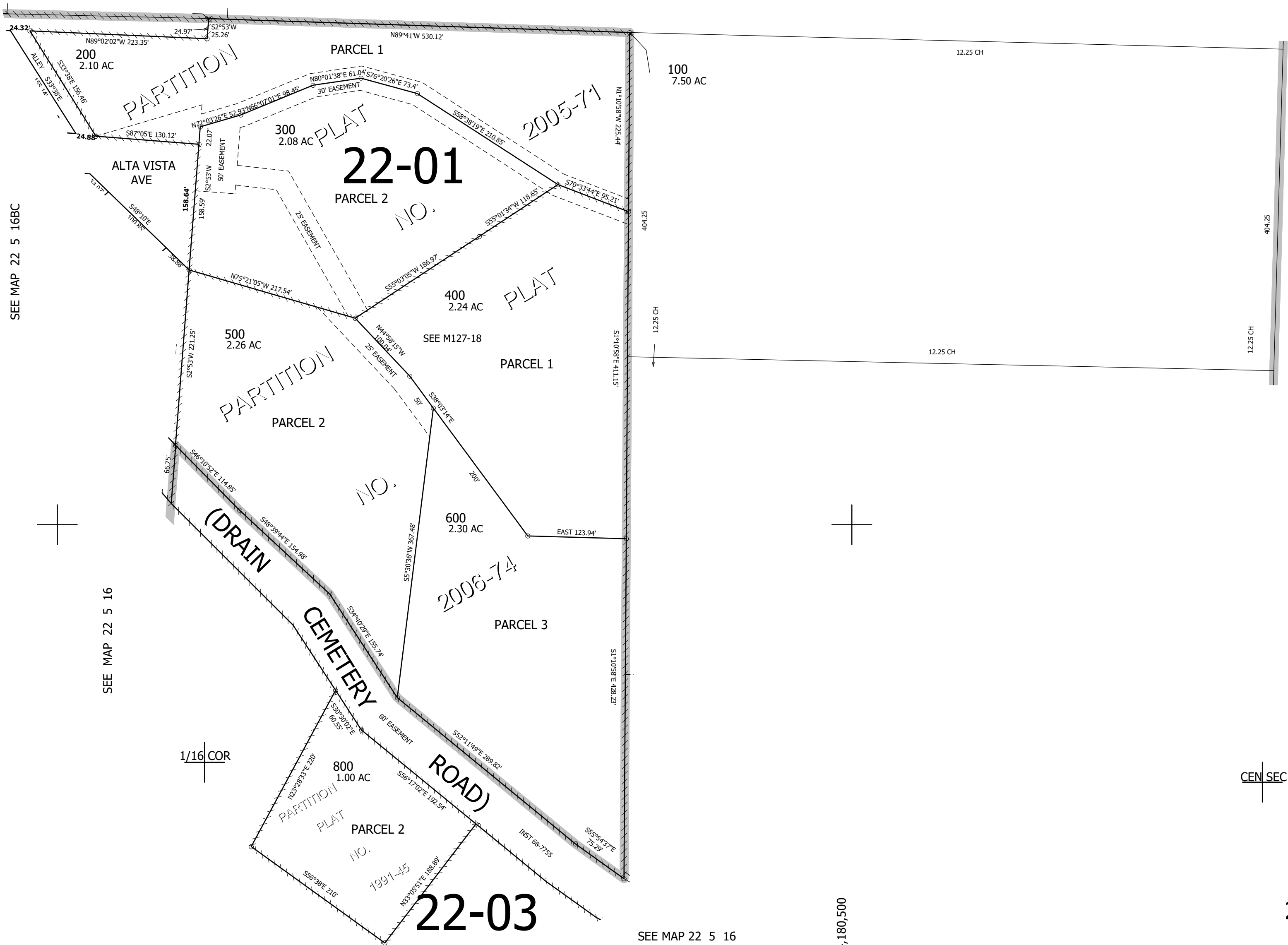
1/16 COR



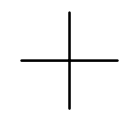
1/16 COR

CANCELLED NO'S
700

SEE MAP 22 5 16

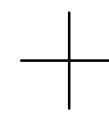


SEE MAP 22 5 16BC



SEE MAP 22 5 16

1/16 COR



SEE MAP 22 5 16

738,000

CEN SEC

SEE MAP 22 5 16

4,180,500

22 5 16BD
DRAIN