

THIS MAP WAS PREPARED FOR ASSESSMENT PURPOSE ONLY.

SW1/4 NW1/4 SEC.16 T.22S. R.5W. W.M. DOUGLAS COUNTY

REVISED ON
12-14-11

22 5 16BC DRAIN

1" = 100'

SEE MAP 22 5 16BB

22-03

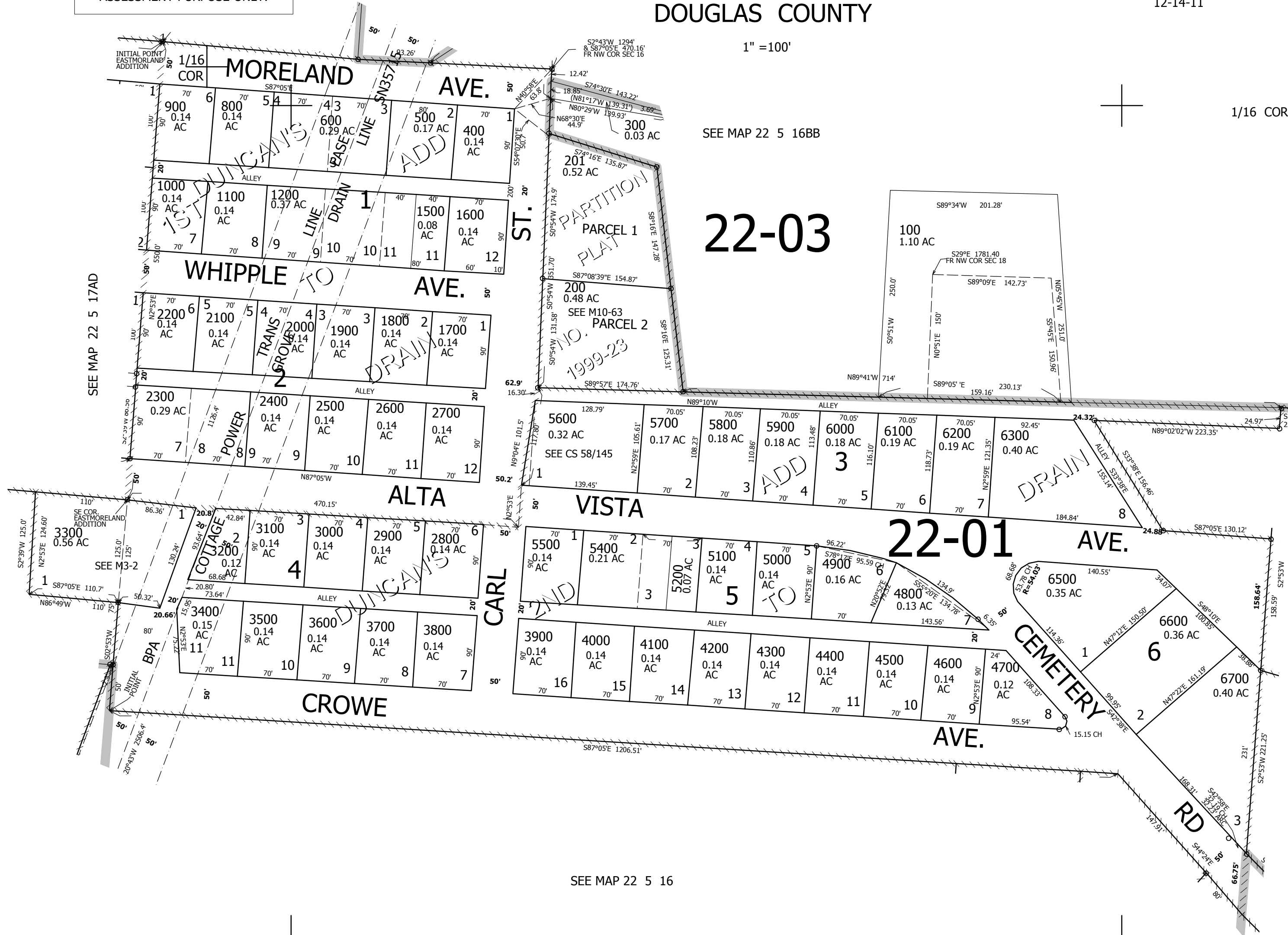
CANCELLED NO'S
1300 5300 1400
700 6400

SEE MAP 22 5 17AD

SEE MAP 22 5 16

SEE MAP 22 5 16

738,000



1/4 COR

1/16 COR

4,179,500

22 5 16BC DRAIN