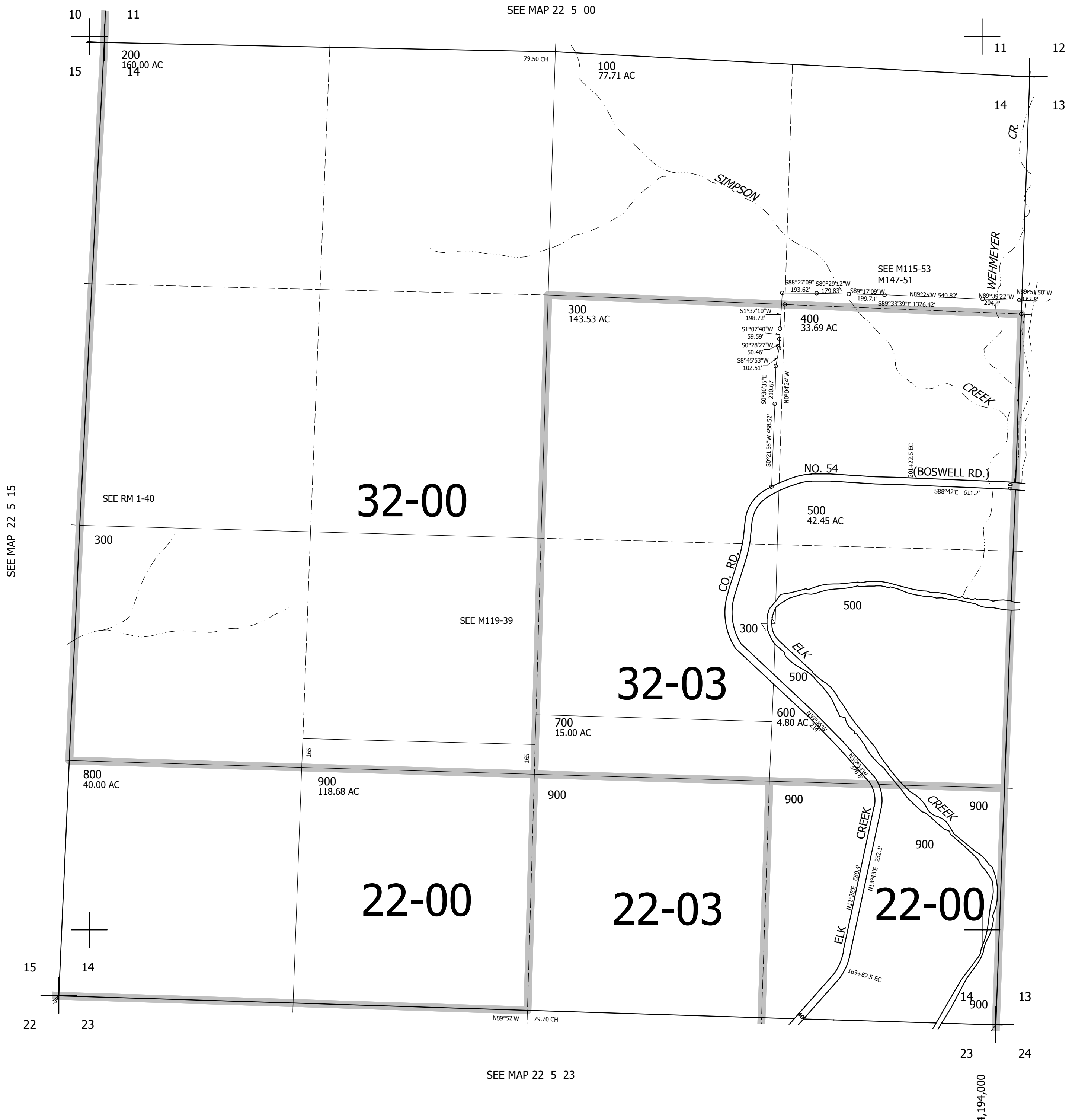


SEC.14 T.22S. R.5W. W.M.
DOUGLAS COUNTY
1" = 400'

REVISED ON
2-28-12

22 5 14

THIS MAP WAS PREPARED FOR
ASSESSMENT PURPOSE ONLY.



CANCELLED NO'S
101 301

SEE MAP 22 5 15

SEE MAP 22 5 13

735,000

SEE MAP 22 5 23

4,194,000

22 5 14