

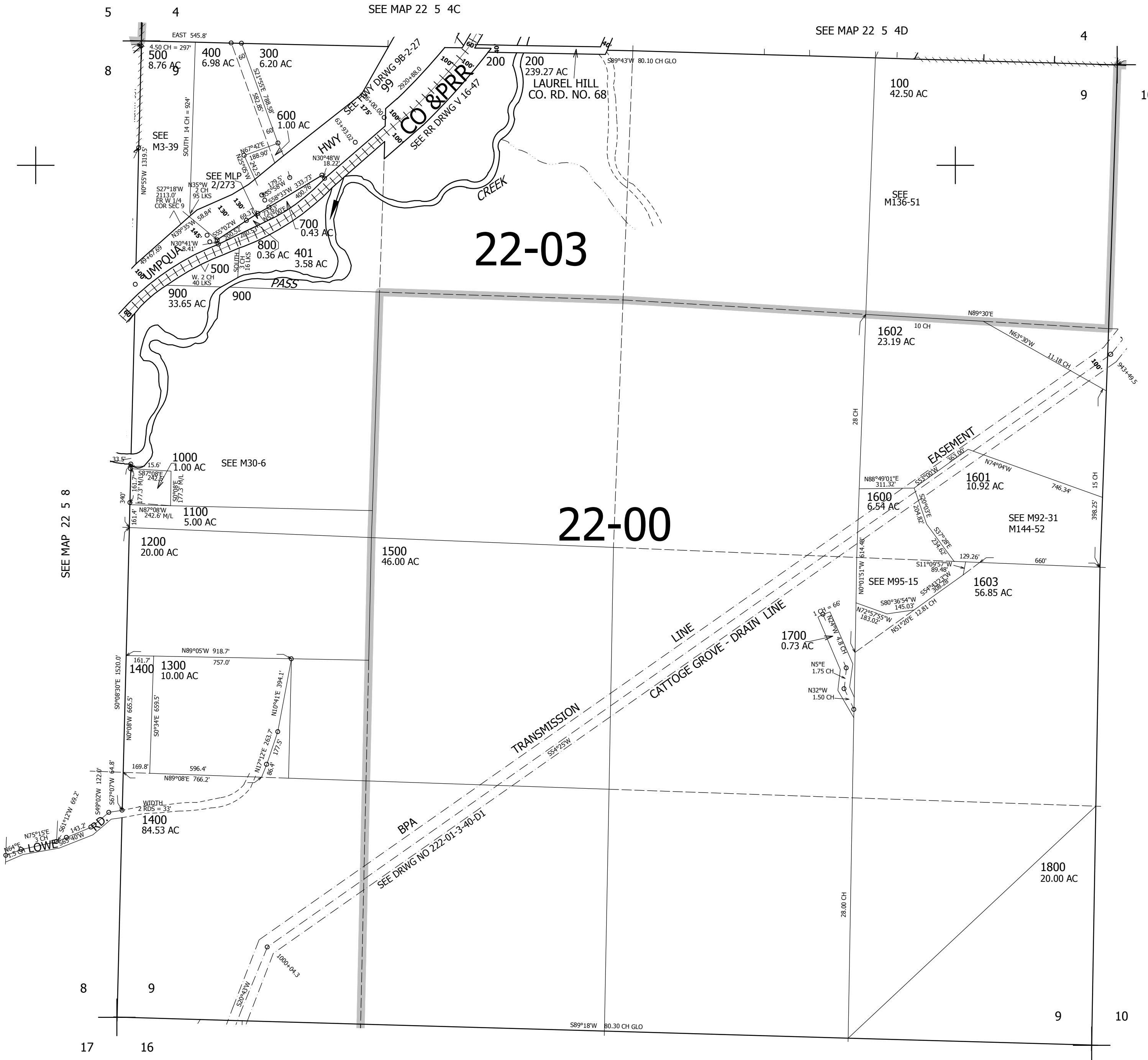
THIS MAP WAS PREPARED FOR ASSESSMENT PURPOSE ONLY.

SEC.9 T.22S. R.5W. W.M. DOUGLAS COUNTY

1" = 400'

REVISED ON 7-27-17

22 5 9



CANCELLED NO'S

SEE MAP 22 5 8

SEE MAP 22 5 10

SEE MAP 22 5 16

740,000

4,183,000

22 5 9