

THIS MAP WAS PREPARED FOR ASSESSMENT PURPOSE ONLY.

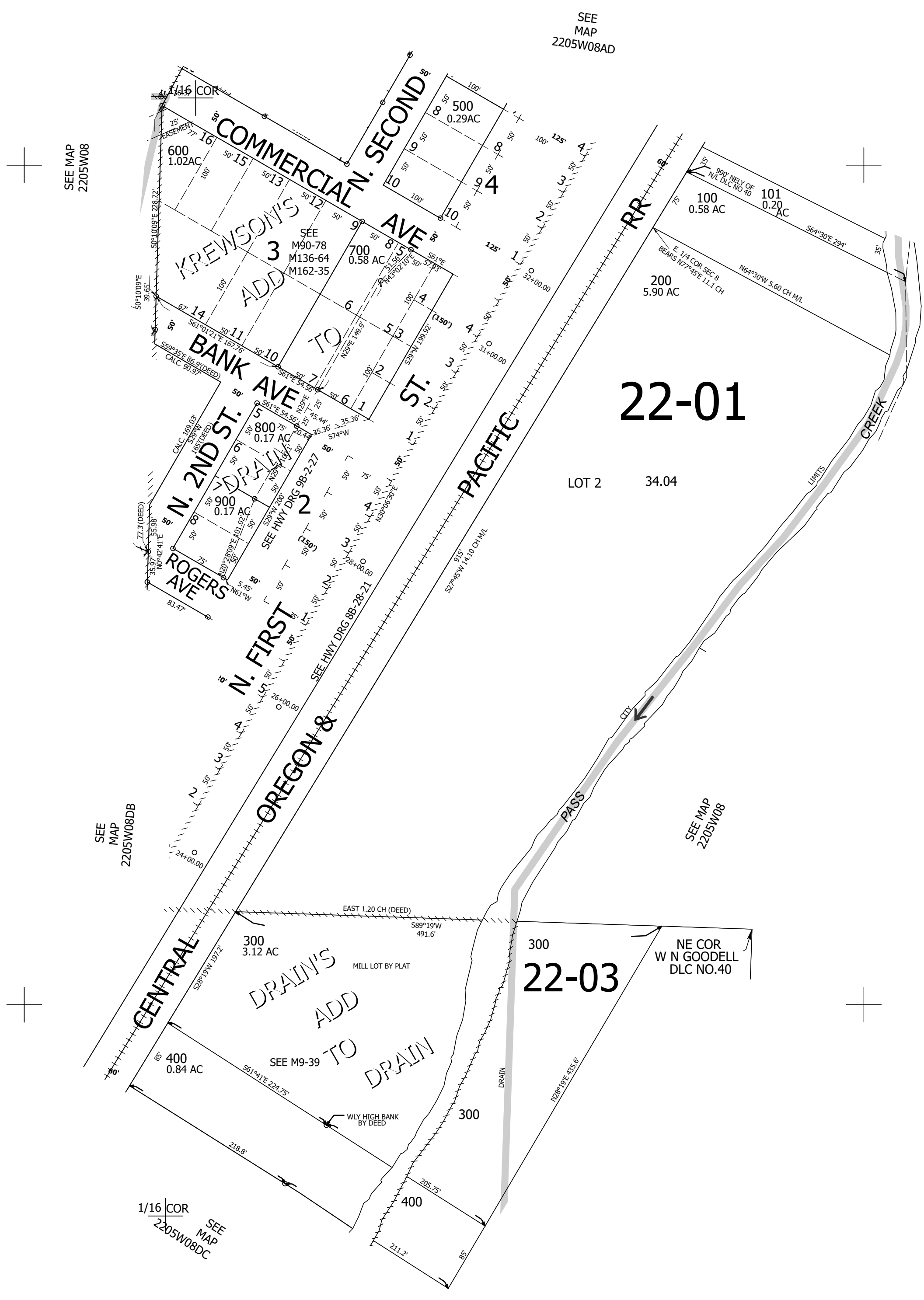
Upper Left:
123°18'55"W 43°40'18"N
4176581E 743255N ft

NE1/4 SE1/4 SEC.08 T.22S. R.05W. W.M.
DOUGLAS COUNTY
1" = 100'

Date Exported 2025-08-05

220508DA
Drain

CANCELLED NOS:



1/4 COR

1/16 COR

220508DA
Drain

Lower Right:
123°18'27"W 43°40'2"N
4178558E 741535N ft