

THIS MAP WAS PREPARED FOR ASSESSMENT PURPOSE ONLY.

Upper Left:
123°19'58"W 43°40'50"N
4172024E 746606N ft

SEC.08 T.22S. R.05W. W.M.
DOUGLAS COUNTY
1" = 400'

Date Expired: 12/8/2022 1:18 PM

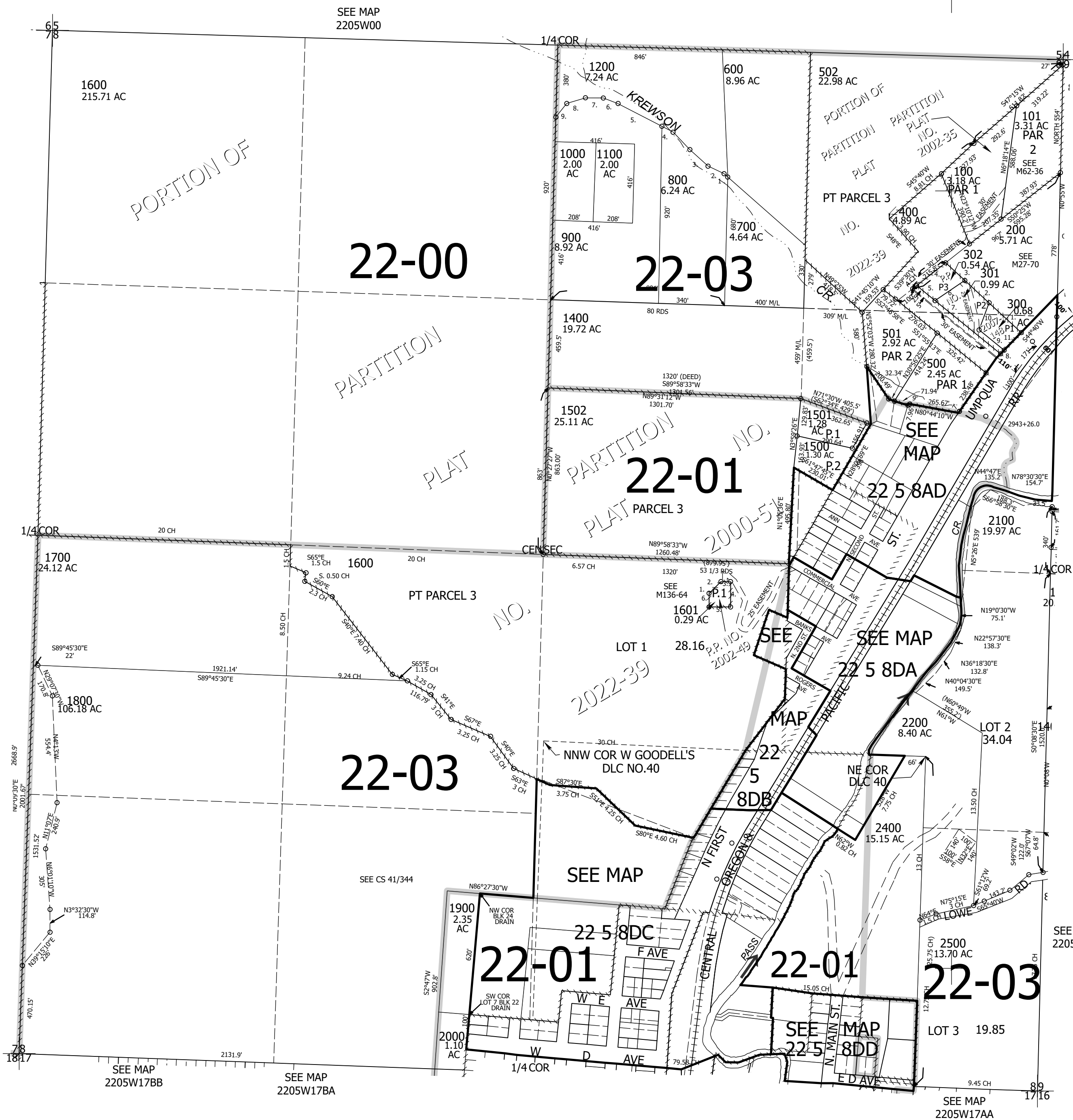
220508 &
Drain

CANCELLED NOS:
2300 1800M1 1300
1503 1504

- PARCEL 1200
1. N58°32'W 40' M/L
 2. N62°23'W 93.1'
 3. N45°16'W 122.2'
 4. N45°40'W 122.2'
 5. N60°24'W 328.5'
 6. N72°00'W 80.4'
 7. N89°10'W 80.4'
 8. S74°39'W 97.7'
 9. S42°54'W 97.4'

- PARCEL 1601
1. CEN 1/4 COR BEARS N79°04'58"W 871.78'
 2. N43°04'50"E 84.85'
 3. N88°04'50"E 50'
 4. S1°55'10"E 130'
 5. S88°04'50"W 110'
 6. N1°55'10"W 70'

- PP 2007-148
1. N46°54'29"W 257.5'
 2. N46°54'29"W 170'
 3. N46°54'29"W 135'
 4. S52°01'23"W 190.19'
 5. S50°32'32"E 123'
 6. N56°09'07"E 184.87'
 7. S50°32'32"E 452.72'
 8. N49°40'23"E 25.4'
 9. N50°32'06"W 186.43'
 10. N20°40'54"E 149.22'
 11. N49°40'23"E 126.99'



PORTION OF

22-00

22-03

22-01

22-03

22-01

22-01

22-03

SEE MAP 2205W17BB

SEE MAP 2205W17BA

SEE MAP 2205W17AA

SEE MAP 2205W09

SEE MAP 2205W09

SEE MAP 2205W17AA

Lower Right:
123°18'10"W 43°39'43"N
4179777E 739584N ft

220508 &
Drain