

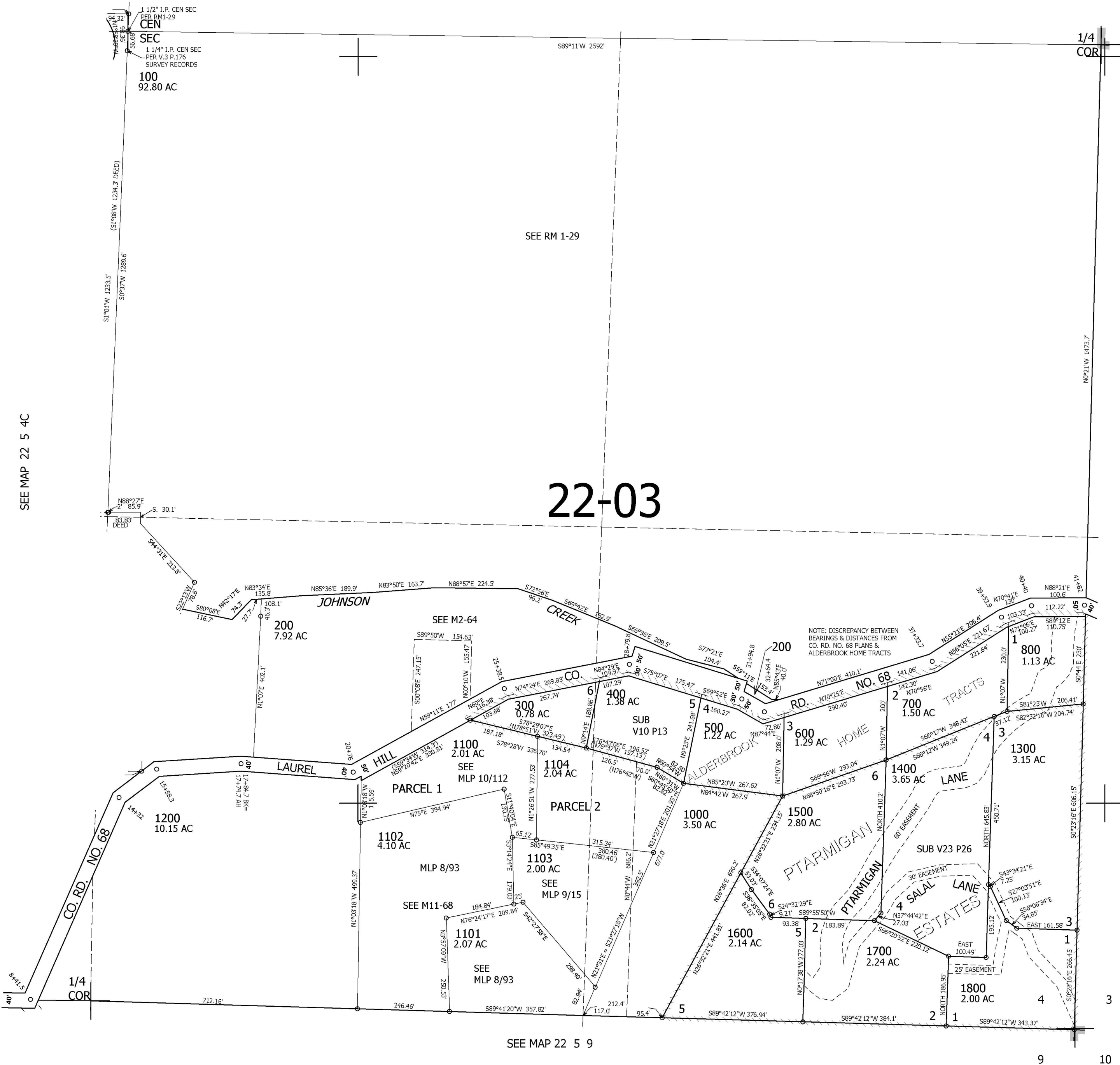
THIS MAP WAS PREPARED FOR ASSESSMENT PURPOSE ONLY.

SE1/4 SEC.4 T.22S. R.5W. W.M.  
DOUGLAS COUNTY  
1" = 200'

REVISED ON  
2-24-10

22 5 4D

SEE MAP 22 5 4A



SEE MAP 22 5 4C

CANCELLED NO'S  
900

SEE MAP 22 5 3

CO. RD. NO 68 C/L

WEST 161' FROM S. 1/4 COR  
 STA 8+41.5  
 N22°10'E 590.5'  
 STA 14+32  
 N51°30'E 126.3'  
 STA 15+58.3  
 N84°47'E 226.4'  
 STA 17+84.7 BK = 17+74.7 AH  
 S87°12'E 301.3'  
 STA 20+76  
 N59°35'E 462.5'  
 STA 25+38.5  
 N77°30'E 341.3'  
 STA 28+79.8'  
 S74°24'E 315'  
 STA 31+94.8  
 S61°46'E 69.6'  
 STA 32+64.4  
 N71°45'E 469.3'  
 STA 37+33.7  
 N55°58'E 220.2'  
 STA 39+53.9  
 N67°44'E 86.1'  
 STA 40+40  
 N87°50'E 142'  
 STA 41+82

746,000

SEE MAP 22 5 9

9 10

4,182,000

22 5 4D