

THIS MAP WAS PREPARED FOR ASSESSMENT PURPOSE ONLY.

SE1/4 NW1/4 SEC.4 T.22S. R.5W. W.M.  
DOUGLAS COUNTY

REVISED ON  
7-26-17

22 5 4BD

1" = 100'

SEE MAP 22 5 4B

SEE MAP 22 5 4B

CANCELLED NO'S  
200A1 1700M1 1400

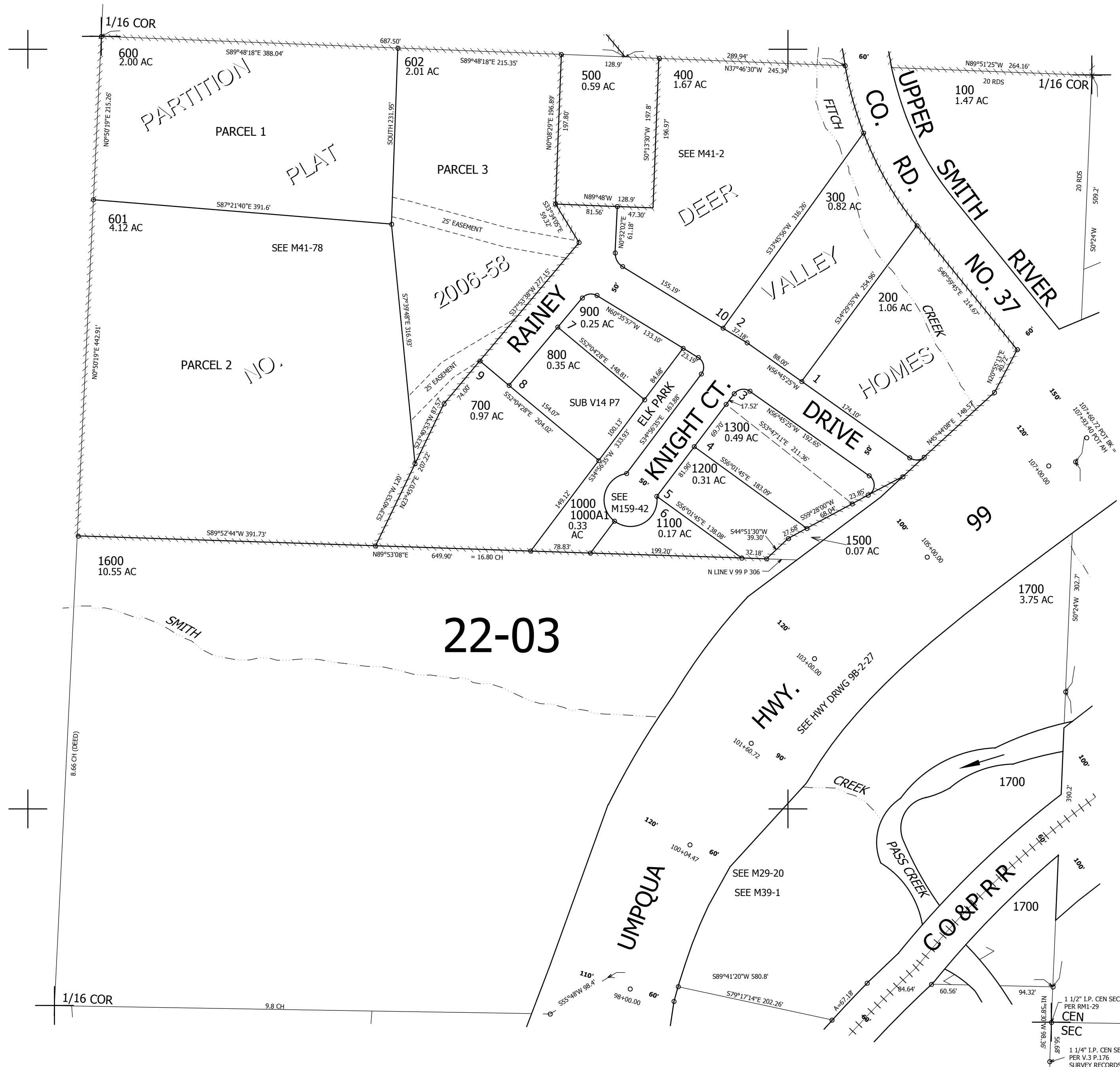
SEE MAP 22 5 4A

748,500

SEE MAP 22 5 4C

4,181,000

22 5 4BD



1 1/2" I.P. CEN SEC  
PER RM1-29  
CEN  
SEC

1 1/4" I.P. CEN SEC  
PER V.3 P.176  
SURVEY RECORDS