

THIS MAP WAS PREPARED FOR ASSESSMENT PURPOSE ONLY.

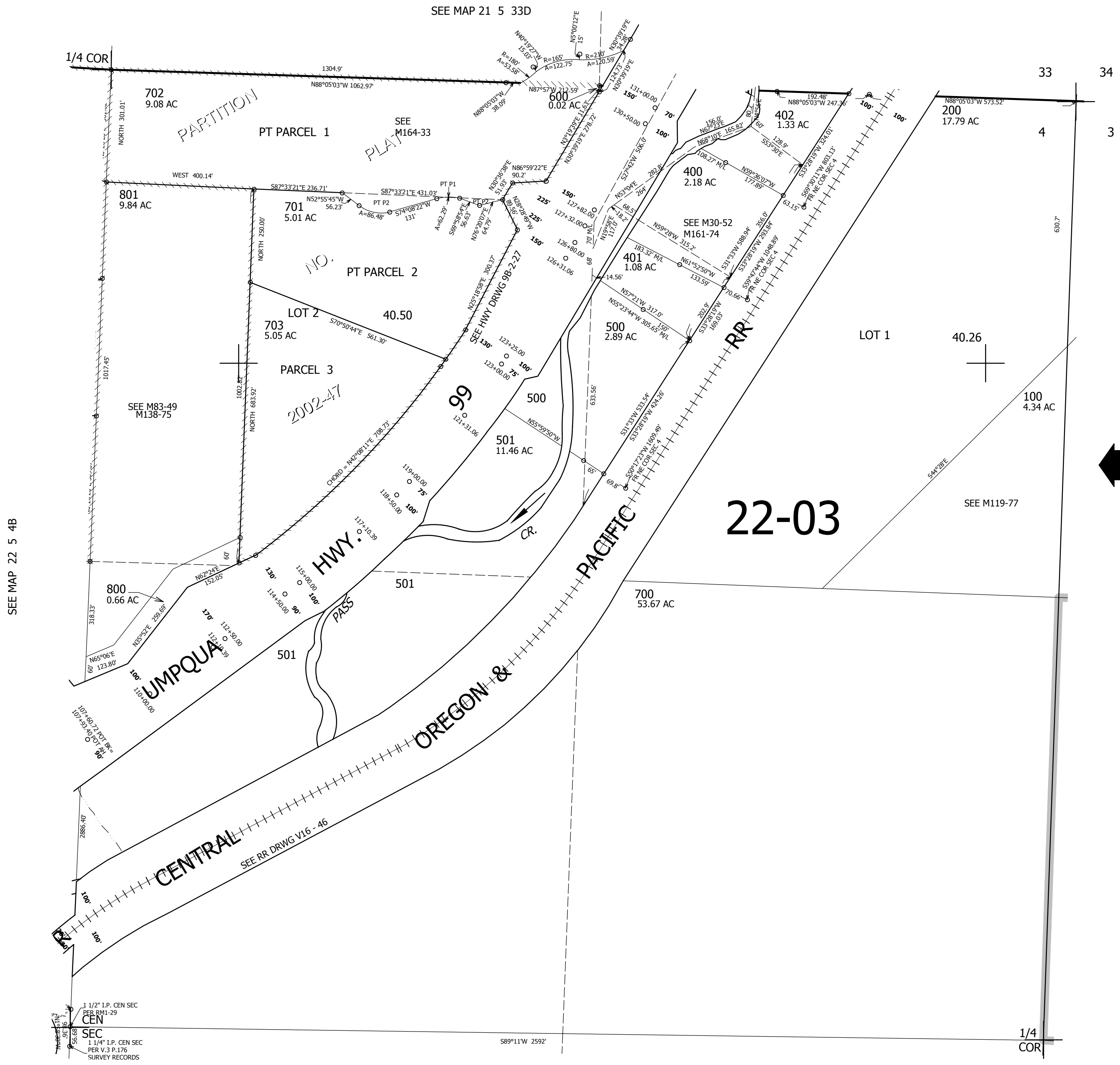
NE1/4 SEC.4 T.22S. R.5W. W.M. DOUGLAS COUNTY

REVISED ON
7-26-17

22 5 4A

1" = 200'

SEE MAP 21 5 33D



CANCELLED NO'S
300 900 900M1
500M1 704 705
706

SEE MAP 22 5 4B

SEE MAP 22 5 3

1 1/2" LP. CEN SEC
PER R.M. 1-29
CEN
SEC
1 1/4" LP. CEN SEC
PER V.3 P.176
SURVEY RECORDS

SEE MAP 22 5 4D

748,000

22 5 4A

4,183,800