

THIS MAP WAS PREPARED FOR ASSESSMENT PURPOSE ONLY.

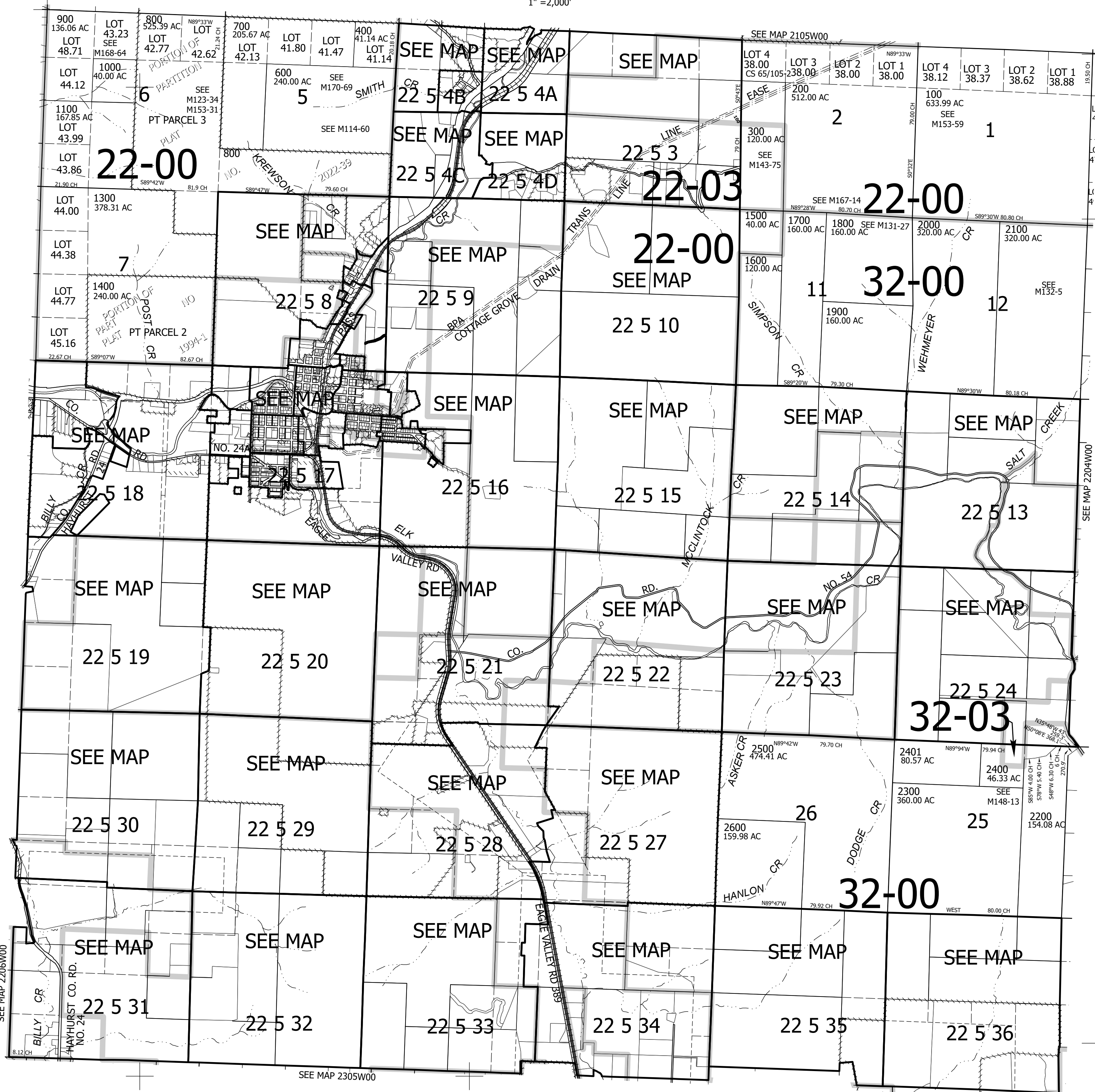
Upper Left:
123°21'52"W 43°41'43"N
4163859E 752286N ft

T.22S. R.05W. W.M.
DOUGLAS COUNTY
1" = 2,000'

Date Exported 2025-03-27

220500
& INDEX

CANCELLED NOS:
1901 500 1200



220500
& INDEX

Lower Right:
123°12'43"W 43°36'13"N
4203106E 717510N ft