

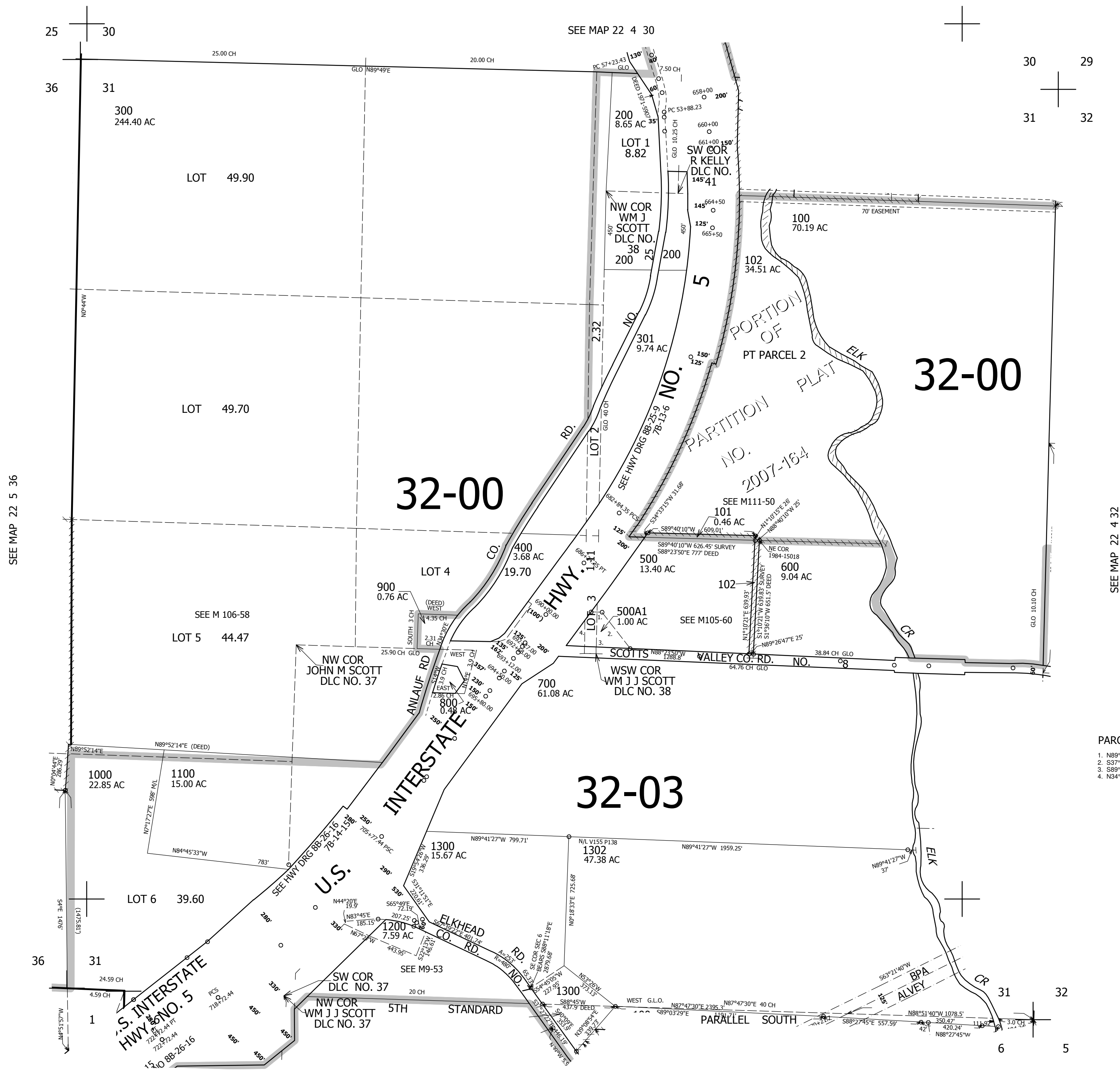
THIS MAP WAS PREPARED FOR ASSESSMENT PURPOSE ONLY.

SEC.31 T.22S. R.4W. W.M. DOUGLAS COUNTY

REVISED ON 9-24-19

22 4 31

1" = 400'



SEE MAP 22 4 30

30 29  
31 32

CANCELLED NO'S  
1301 1000M1 501

SEE MAP 22 5 36

SEE MAP 22 4 32

PARCEL 500A1

1. N89°48'48"E 71'
2. S37°53'36"E 252.81'
3. S89°48'48"W 364.64'
4. N34°36'54"E 243.58'

719,000

SEE MAP 23 4 6

4,204,000

22 4 31