

THIS MAP WAS PREPARED FOR ASSESSMENT PURPOSE ONLY.

Upper Left:
123°13'59"W 43°38'9"N
4197889E 729465N ft

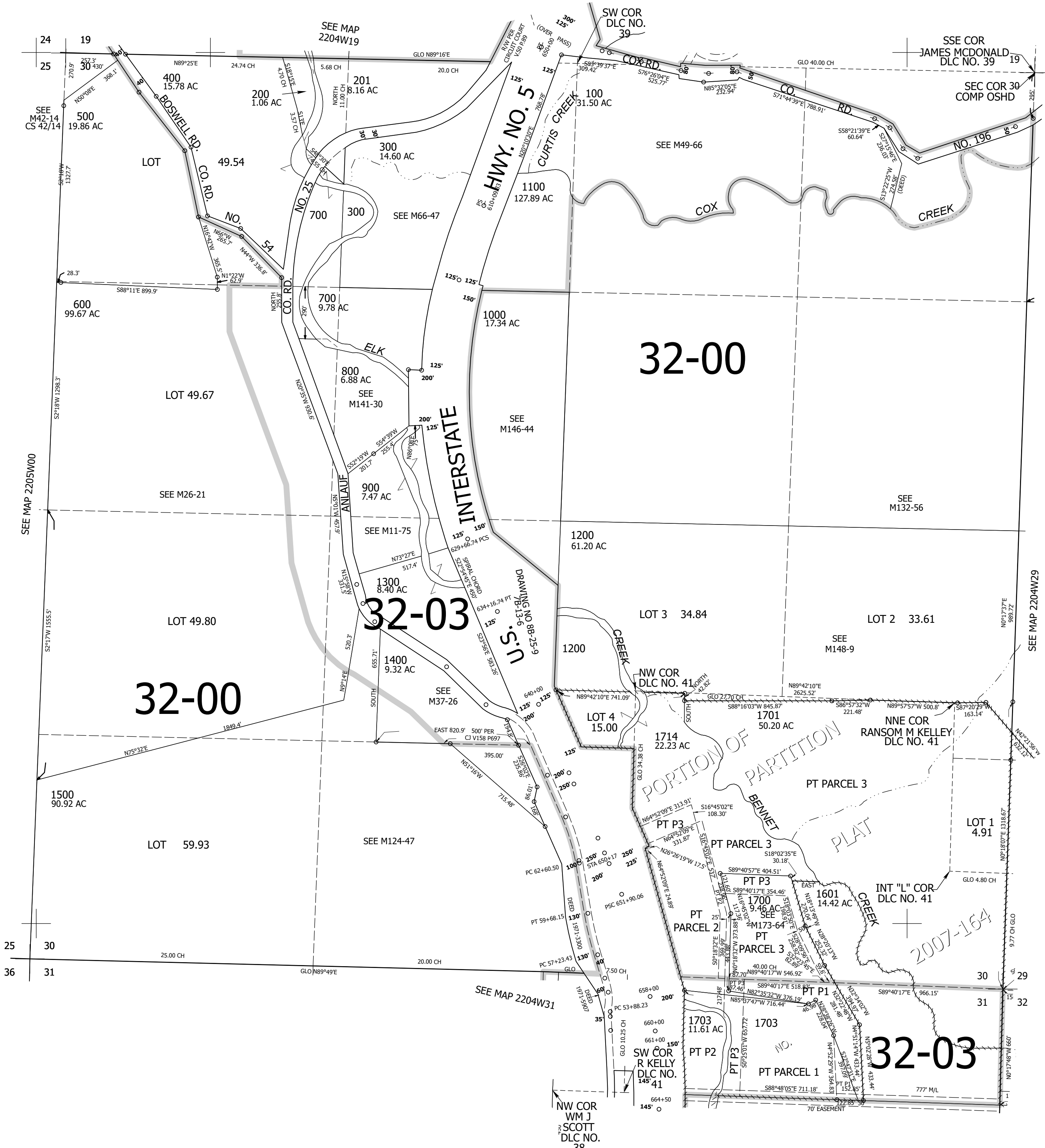
SEC.30 T.22S. R.04W. W.M.
DOUGLAS COUNTY

1" = 400'

Date Exported 2024-04-25

220430

CANCELLED NOS:
200M1 201M1 299M1
400M1 1100M1 1602
1600 299 1704
1705 1706 1707
1708 1702 1709
1710 1711 1712
1713



SEE MAP 2204W29

SEE MAP 2205W00

SEE MAP 2204W31

220430

Lower Right:
123°12'9"W 43°37'3"N
4205738E 722509N ft