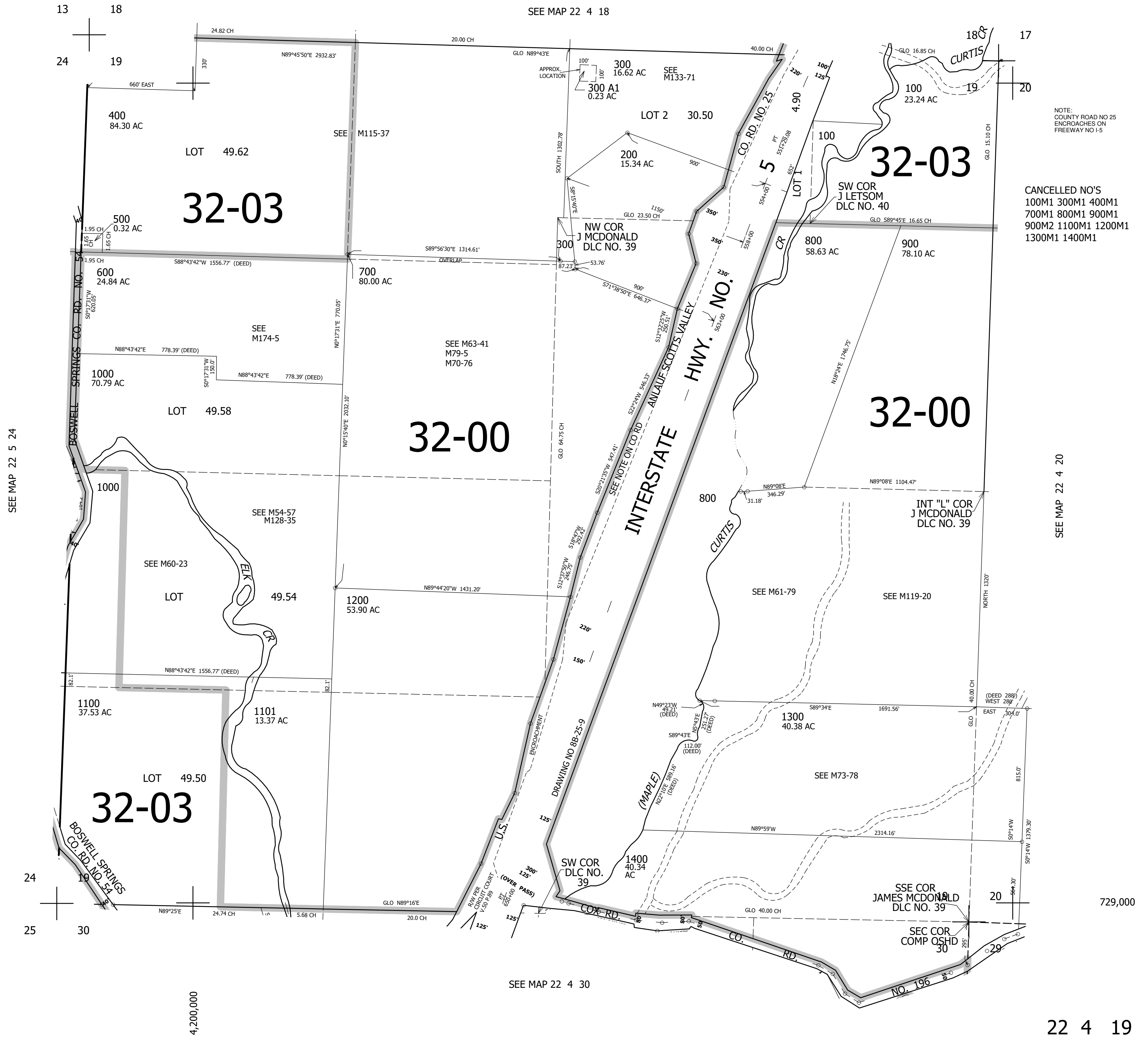


THIS MAP WAS PREPARED FOR ASSESSMENT PURPOSE ONLY.

SEC.19 T.22S. R.4W. W.M.
DOUGLAS COUNTY
1" = 400'

REVISED ON
2-29-12

22 4 19



SEE MAP 22 5 24

SEE MAP 22 4 18

NOTE:
COUNTY ROAD NO 25
ENCLOSES ON
FREEWAY NO I-5

CANCELLED NO'S
100M1 300M1 400M1
700M1 800M1 900M1
900M2 1100M1 1200M1
1300M1 1400M1

SEE MAP 22 4 20

729,000

SEE MAP 22 4 30

4,200,000

22 4 19