

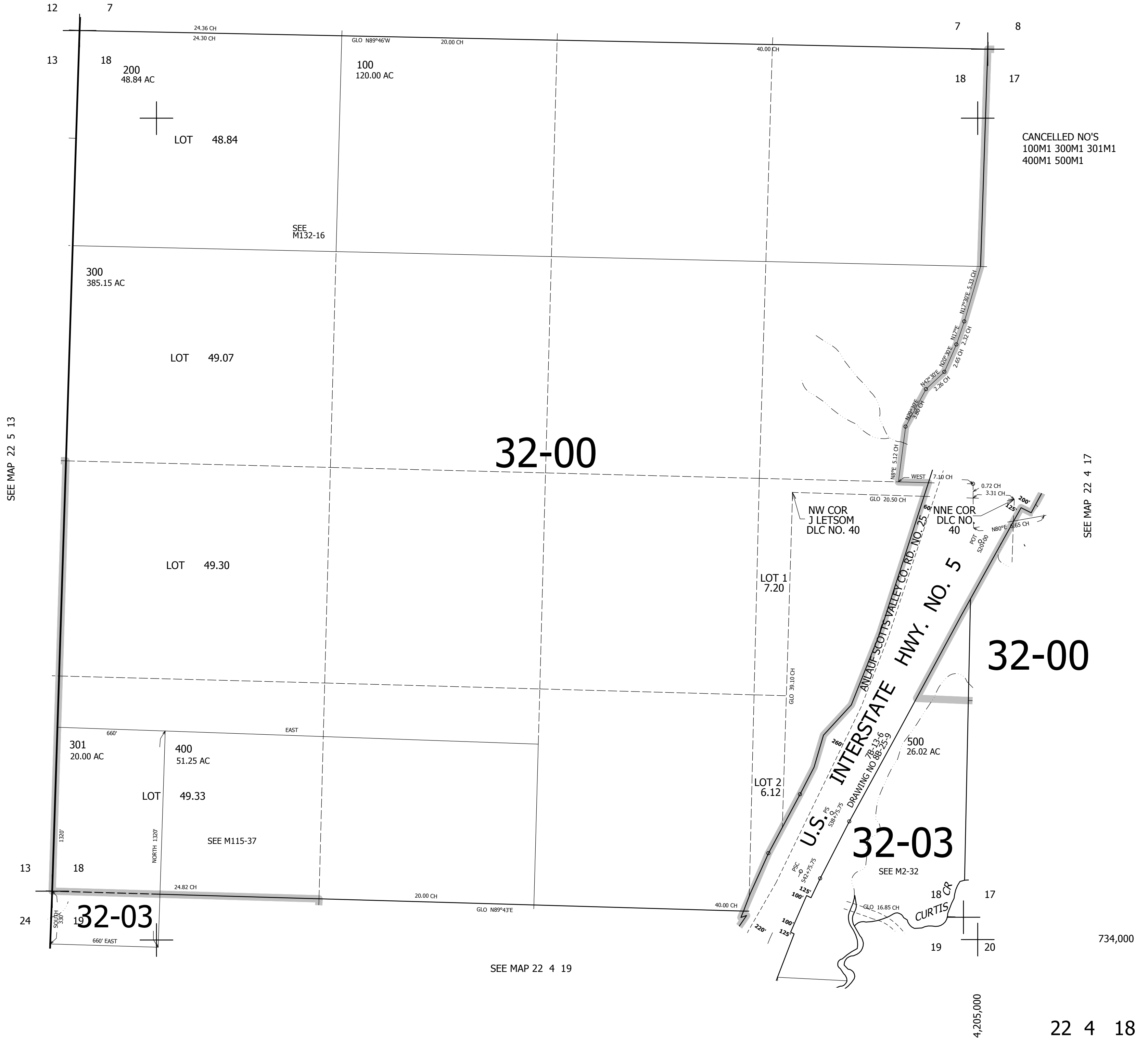
THIS MAP WAS PREPARED FOR ASSESSMENT PURPOSE ONLY.

SEC.18 T.22S. R.4W. W.M.  
DOUGLAS COUNTY  
1" = 400'

REVISED ON  
2-29-12

22 4 18

SEE MAP 22 4 7



SEE MAP 22 5 13

SEE MAP 22 4 17

32-00

32-00

32-03

32-03

SEE MAP 22 4 19

734,000

4,205,000

22 4 18