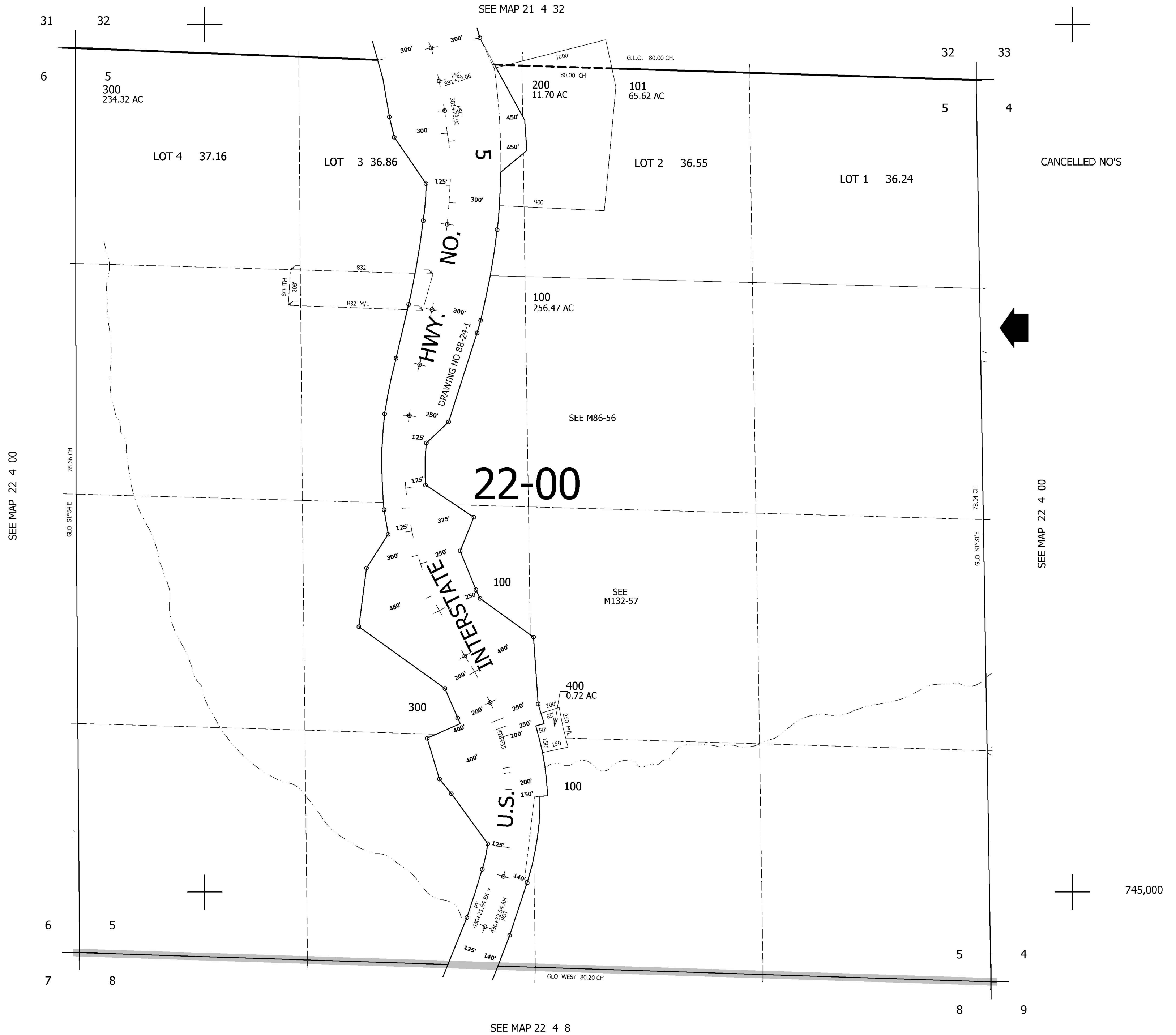


THIS MAP WAS PREPARED FOR ASSESSMENT PURPOSE ONLY.

SEC.5 T.22S. R.4W. W.M.
DOUGLAS COUNTY
1" = 400'

REVISED ON
7-12-96

22 4 5



SEE MAP 22 4 00

G.L.O. S1°59'E 786.66 CH

G.L.O. S1°31'E 780.04 CH

SEE MAP 22 4 00

22-00

SEE M86-56

SEE M132-57

SEE MAP 22 4 8

4,206,000

745,000

22 4 5