

THIS MAP WAS PREPARED FOR ASSESSMENT PURPOSE ONLY.

SW1/4 SE1/4 SEC.35 T.21S. R.12W. W.M.
DOUGLAS COUNTY

1" = 100'

REVISED ON
6-13-17

21 12 35DC
REEDSPORT

STATE HWY.
NO. 38
SEE HWY DRWG 48-21-22
ST HWY 101-010

SEE MAP 21 12 35CA

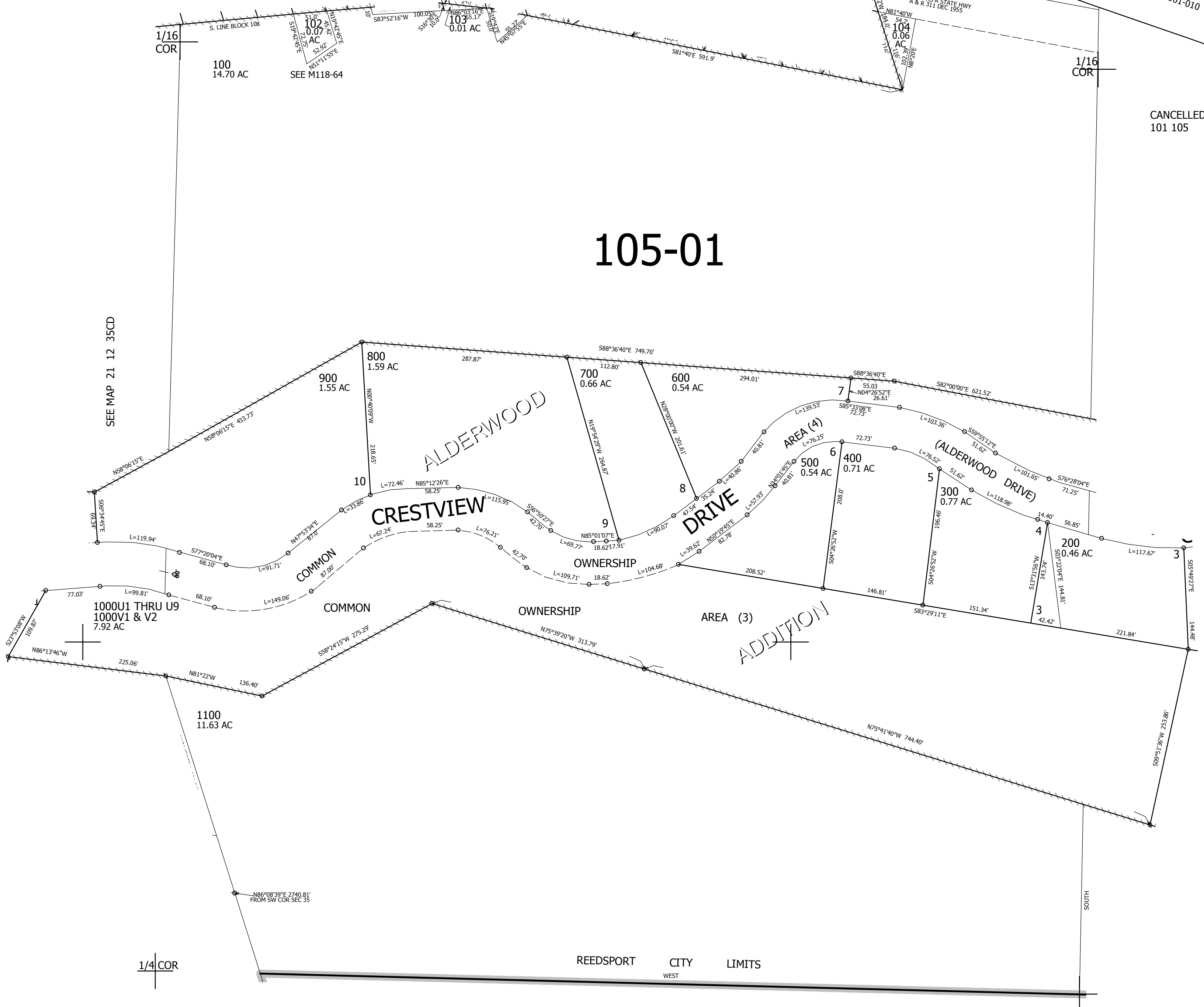
SEE MAP 21 12 35DB

CANCELLED NO'S
101 105

105-01

SEE MAP 21 12 35CD

SEE MAP 21 12 35DD



761,000

REEDSPORT CITY LIMITS
WEST

SEE MAP 22 12 2

3,972,000

21 12 35DC
REEDSPORT