

THIS MAP WAS PREPARED FOR ASSESSMENT PURPOSE ONLY.

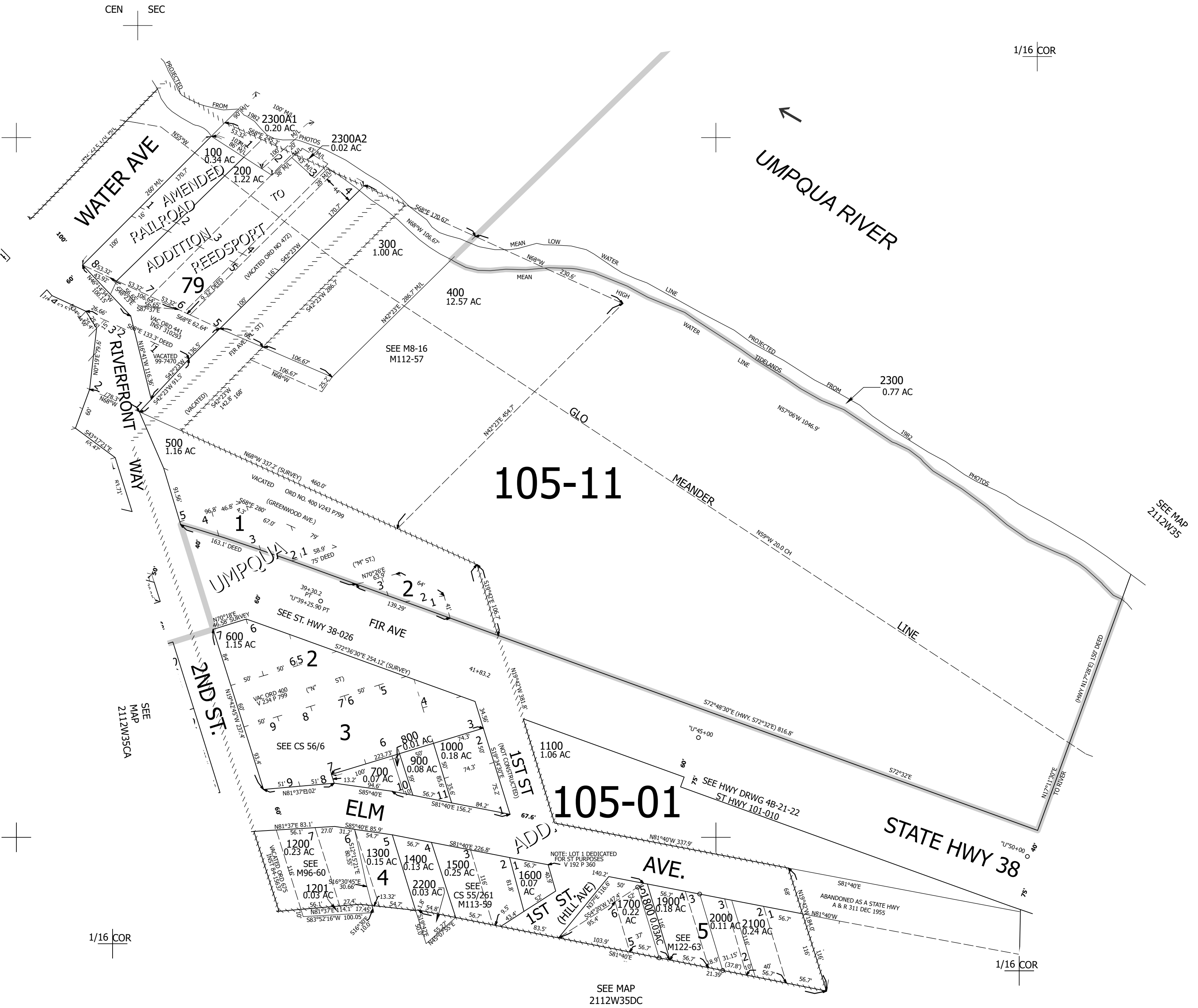
Upper Left:  
124°5'44"W 43°42'19"N  
3970817E 763354N ft

NW1/4 SE1/4 SEC.35 T.21S. R.12W. W.M.  
DOUGLAS COUNTY  
1" = 100'

Date Exported 2026-04-23

211235DB  
Reedsport

CANCELLED NOS:  
400A1 500A1 1100M1  
100A1 300A1 400A2



CEN

SEC

1/16 COR

1/16 COR

1/16 COR

SEE MAP  
2112W35DC

SEE MAP  
2112W35

211235DB  
Reedsport

Lower Right:  
124°5'16"W 43°42'2"N  
3972789E 761615N ft