

THIS MAP WAS PREPARED FOR ASSESSMENT PURPOSE ONLY.

Upper Left:  
124°6'1"W 43°42'19"N  
3969539E 763474N ft

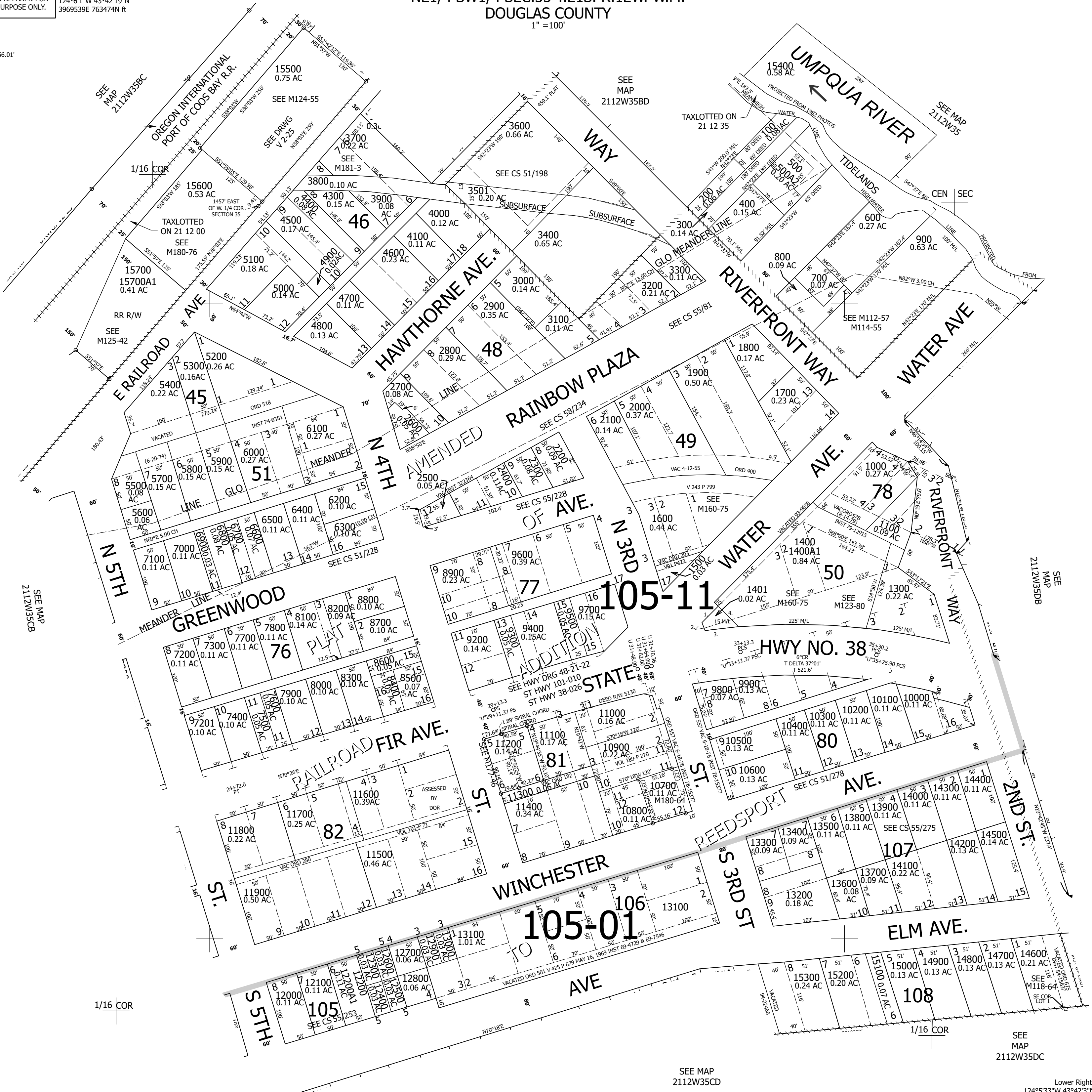
NE1/4 SW1/4 SEC.35 T.21S. R.12W. W.M.  
DOUGLAS COUNTY  
1" = 100'

Date Exported 2025-06-04

211235CA  
Reedsport

PARCEL 1401  
1. S42°41'18"W 35'  
2. S18°50'04"E 12  
3. LC=N86°02'55"E 56.01'  
4. N47°18'42"W 49'

CANCELLED NOS:  
1200 4200 7200A1  
3502 3500 15500M1  
3800M1 3501M1  
8901 9001 9101  
9000 9100 500A1  
11201



1/16 COR

1/16 COR

SEE MAP  
2112W35CD

SEE MAP  
2112W35DC

Lower Right:  
124°5'33"W 43°42'3"N  
3971517E 761754N ft

211235CA  
Reedsport