

THIS MAP WAS PREPARED FOR ASSESSMENT PURPOSE ONLY.

SW1/4 NW1/4 SEC.35 T.21S. R.12W. W.M.
DOUGLAS COUNTY

REVISED ON
8-15-22

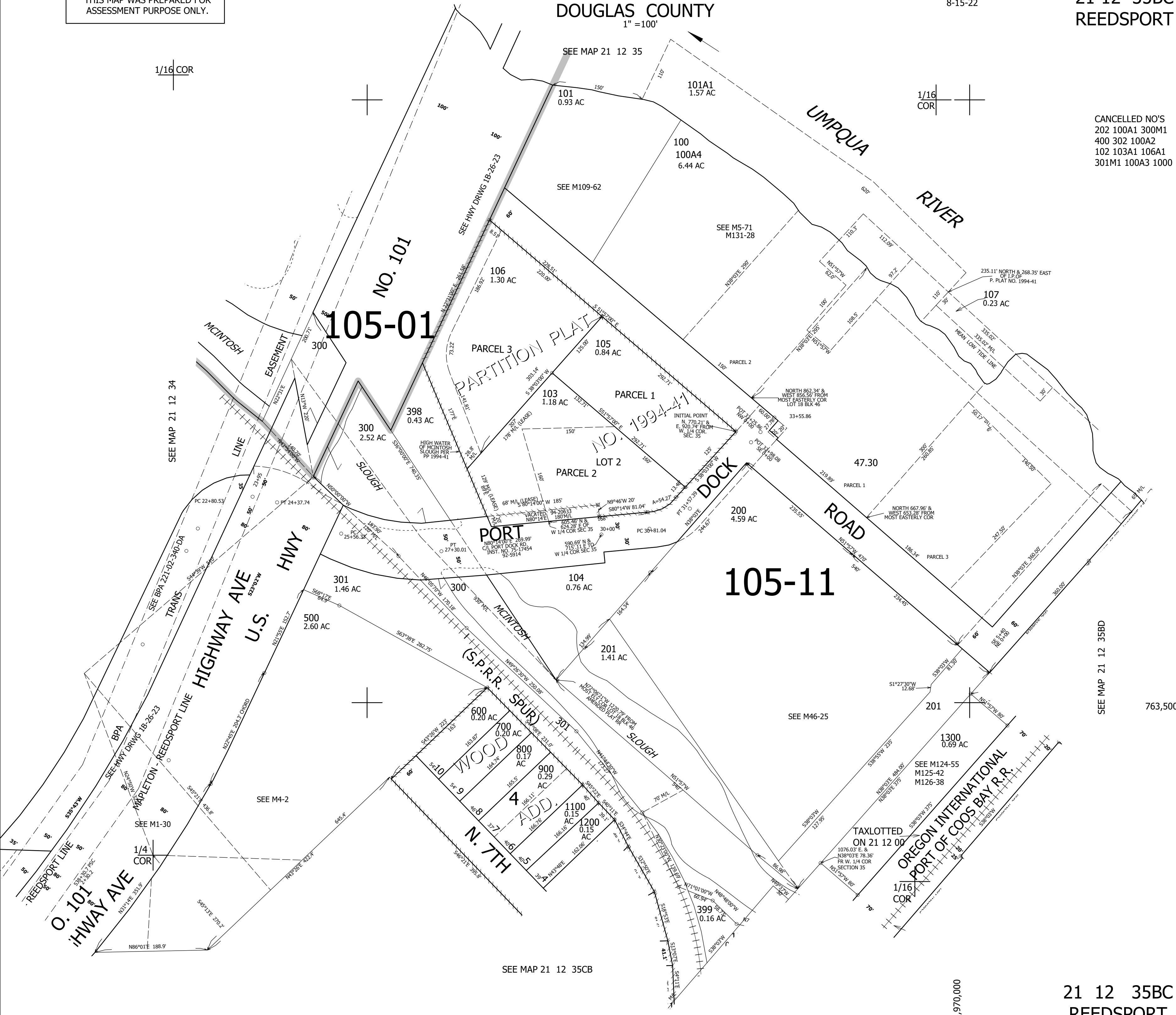
21 12 35BC
REEDSPORT

1" = 100'

1/16 COR

1/16 COR

CANCELLED NO'S
202 100A1 300M1
400 302 100A2
102 103A1 106A1
301M1 100A3 1000



SEE MAP 21 12 35BD

763,500

SEE MAP 21 12 35CB

3,970,000

21 12 35BC
REEDSPORT