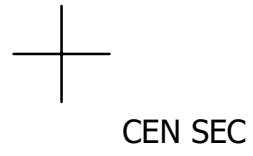


THIS MAP WAS PREPARED FOR ASSESSMENT PURPOSE ONLY.

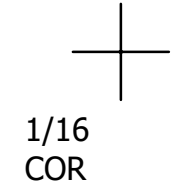
NW1/4 SE1/4 SEC.34 T.21S. R.12W. W.M. DOUGLAS COUNTY

REVISED ON 3-2-22

21 12 34DB REEDSPORT

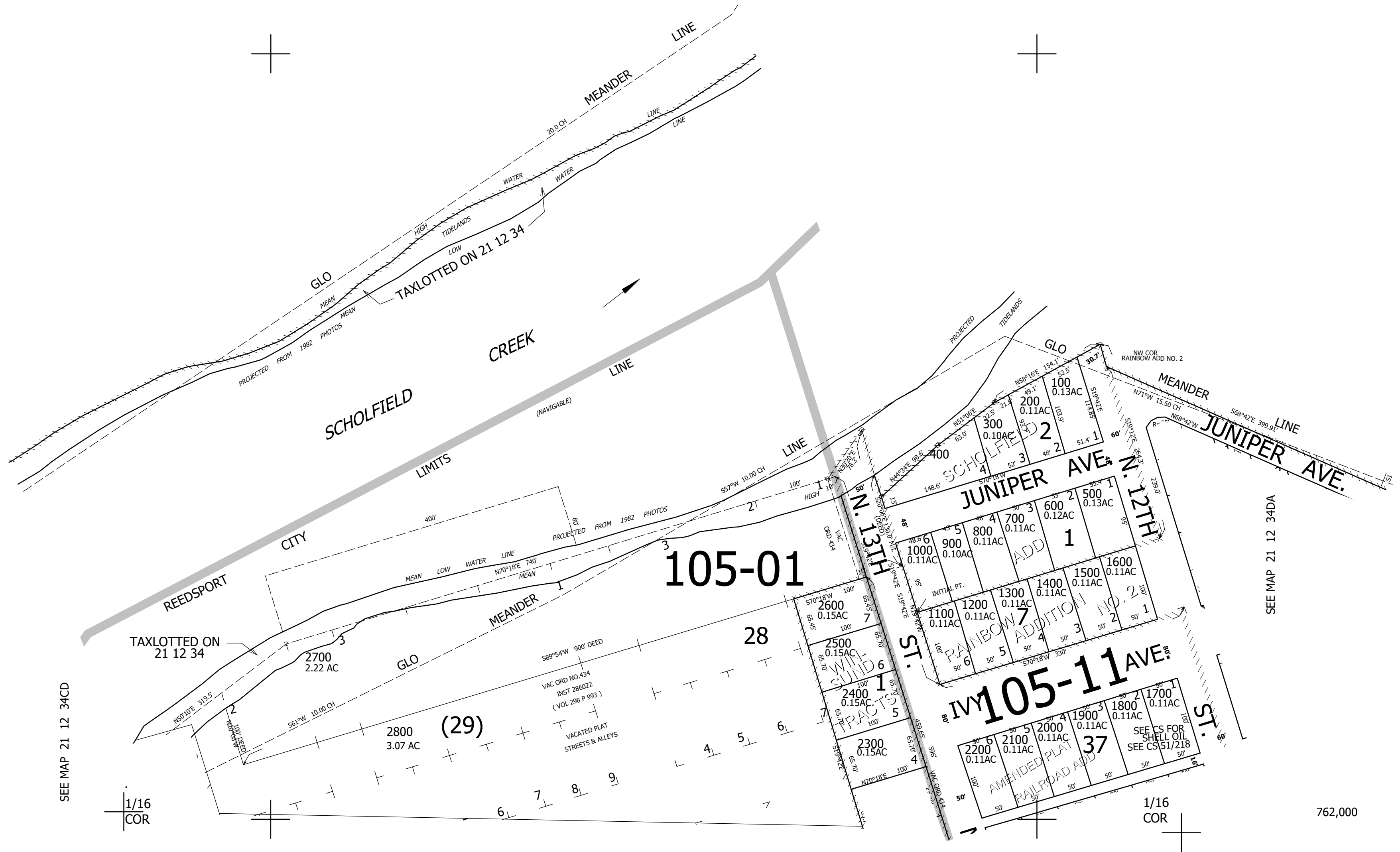


1" = 100'

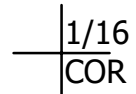


CANCELLED NO'S 2900

SEE MAP 21 12 34

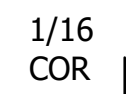


SEE MAP 21 12 34CD



SEE MAP 21 12 34DA

SEE MAP 21 12 34DC



762,000

3,967,000

21 12 34DB REEDSPORT