

THIS MAP WAS PREPARED FOR ASSESSMENT PURPOSE ONLY.

SW1/4 SE1/4 SEC.33 T.21S. R.12W. W.M.  
DOUGLAS COUNTY  
1" = 100'

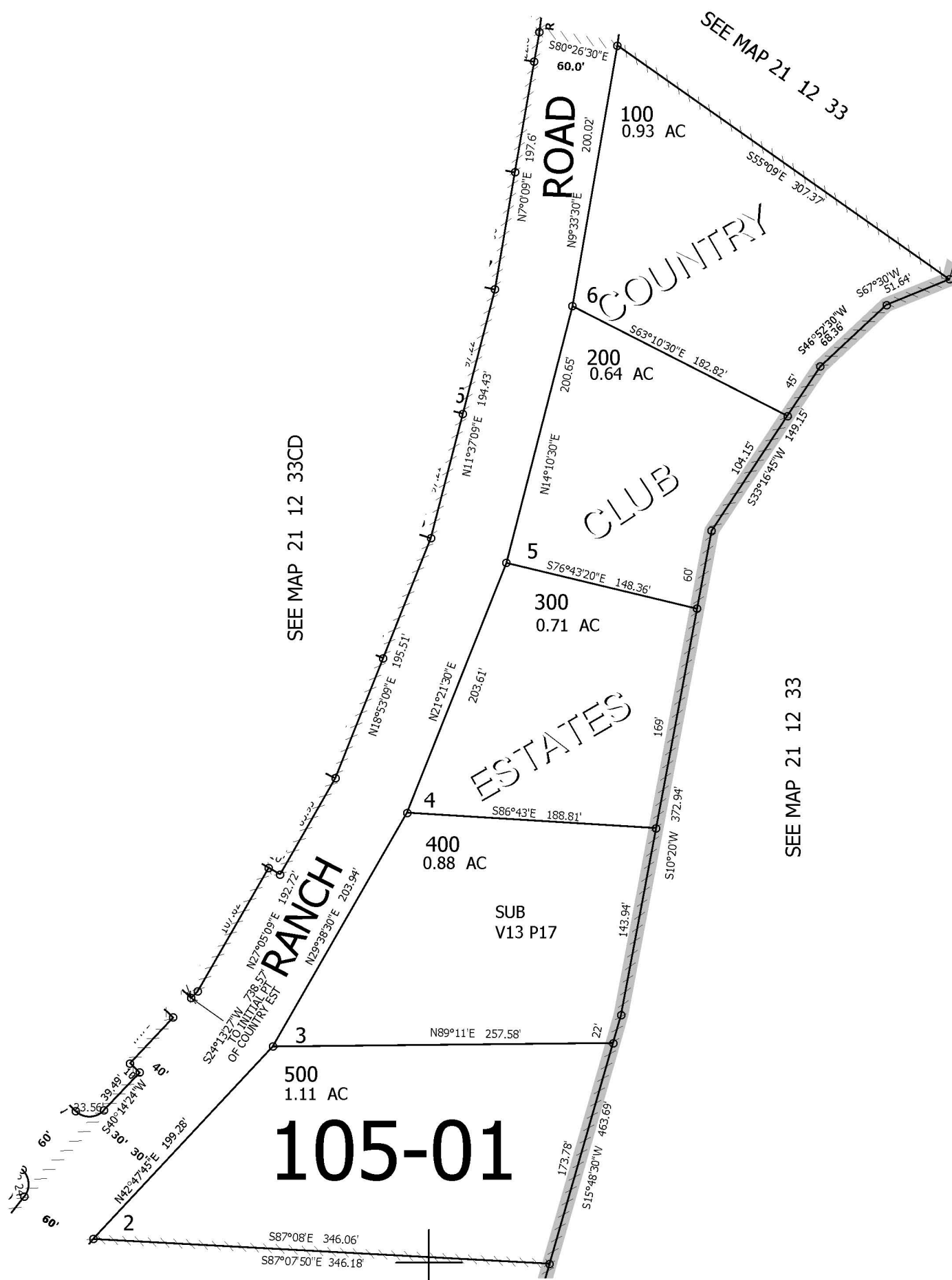
REVISED ON  
10-26-07

21 12 33DC  
REEDSPORT

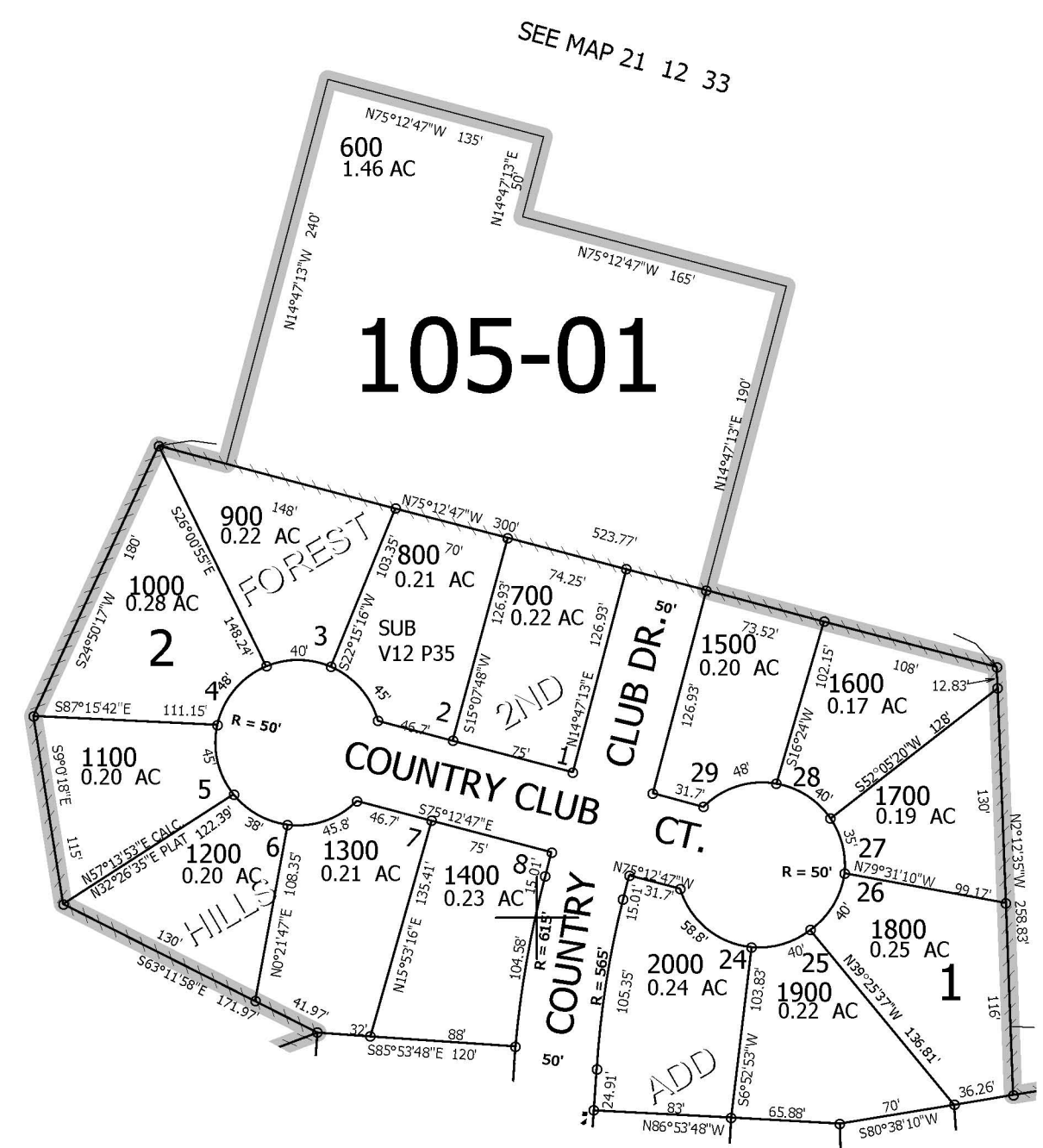
1/16 COR

1/16 COR

CANCELLED NO'S  
600A1



SEE MAP 21 12 33



SEE MAP 21 12 33

SEE MAP 22 12 4AB

3,961,500

761,000

21 12 33DC  
REEDSPORT