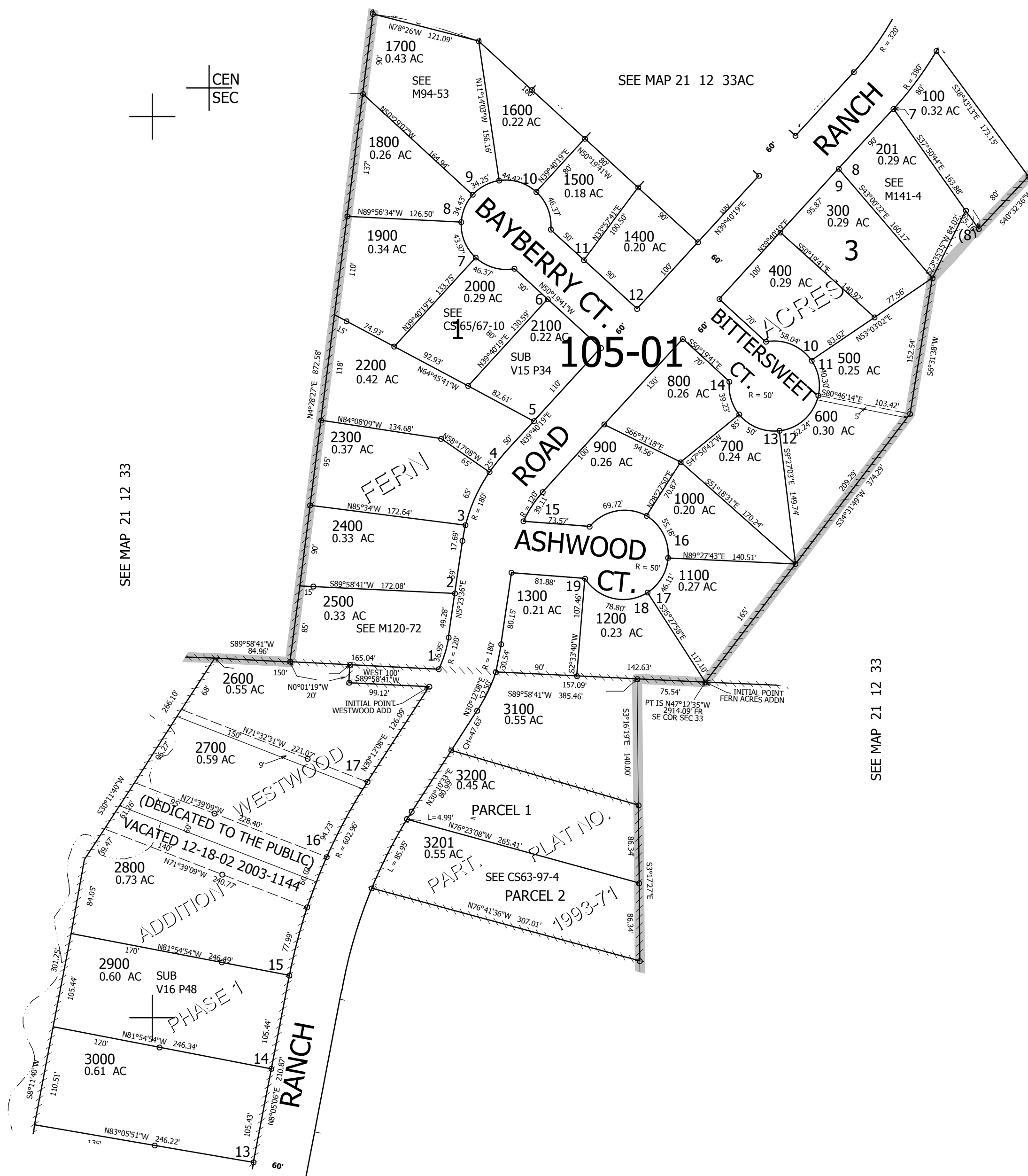


THIS MAP WAS PREPARED FOR ASSESSMENT PURPOSE ONLY.

NW1/4 SE1/4 SEC.33 T.21S. R.12W. W.M.  
DOUGLAS COUNTY  
1" = 100'

REVISED ON  
6-24-20

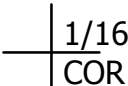
21 12 33DB  
REEDSPORT



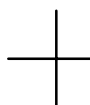
SEE MAP 21 12 33

SEE MAP 21 12 33

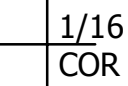
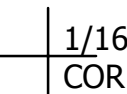
SEE MAP 21 12 33CD



CANCELLED NO'S  
2701 2701M1 2600M1  
2700M1 2800M1 2900M1  
3000M1 3100M1 3200M1  
3201M1 200



762,500



3,961,500

21 12 33DB  
REEDSPORT