

THIS MAP WAS PREPARED FOR ASSESSMENT PURPOSE ONLY.

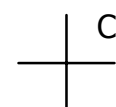
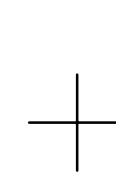
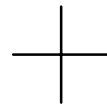
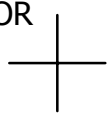
NE1/4 SW1/4 SEC.33 T.21S. R.12W. W.M.  
DOUGLAS COUNTY

1" = 100'

REVISED ON  
10-8-20

21 12 33CA  
REEDSPORT

1/16 COR

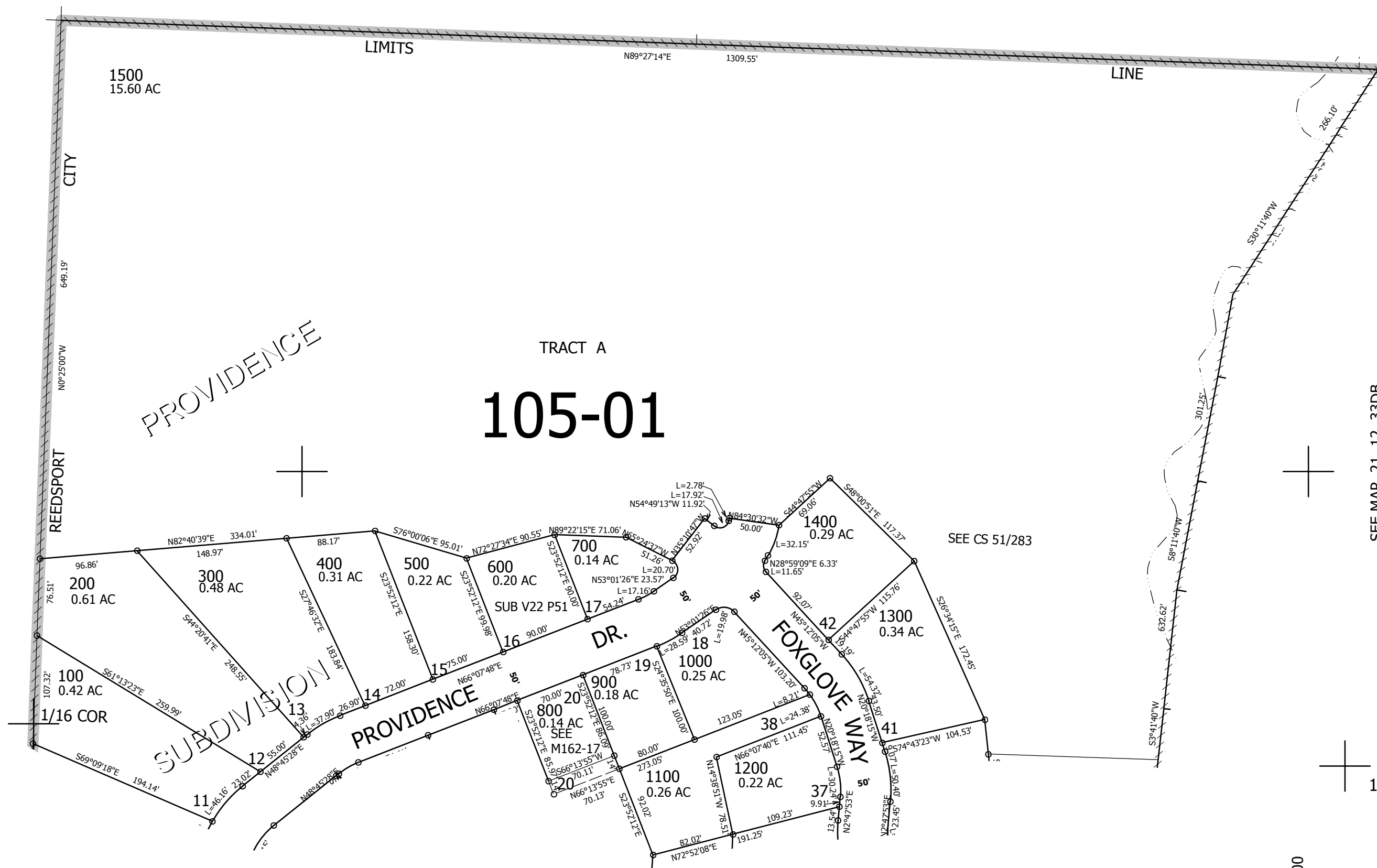


CEN. SEC.

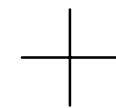
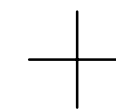
CANCELLED NO'S  
801

SEE MAP 21 12 33

SEE MAP 21 12 33



763,000



1/16 COR

3,960,000

21 12 33CA  
REEDSPORT