

THIS MAP WAS PREPARED FOR ASSESSMENT PURPOSE ONLY.

SW1/4 NE1/4 SEC.33 T.21S. R.12W. W.M.
DOUGLAS COUNTY
1" = 100'

REVISED ON
2-26-18

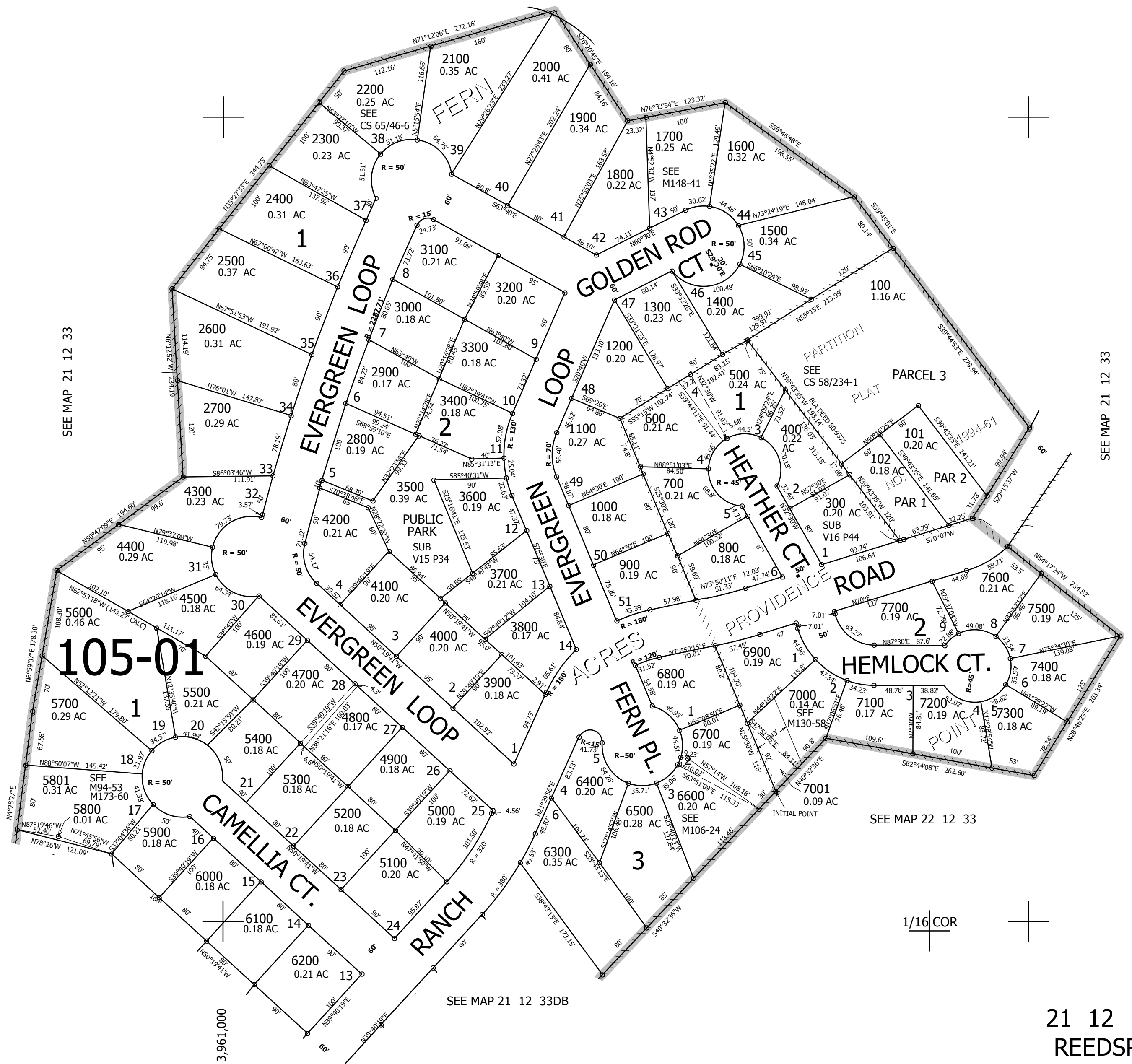
21 12 33AC
REEDSPORT

1/16 COR

1/16 COR

CANCELLED NO'S
4801 6701 200
7100M1 7002

SEE MAP 21 12 33



SEE MAP 21 12 33

SEE MAP 21 12 33

SEE MAP 22 12 33

SEE MAP 21 12 33DB

CEN SEC

1/16 COR

763,500

21 12 33AC
REEDSPORT