

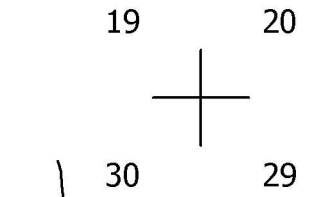
THIS MAP WAS PREPARED FOR ASSESSMENT PURPOSE ONLY.

SEC.29 T.21S. R.12W. W.M.
DOUGLAS COUNTY
1" = 400'

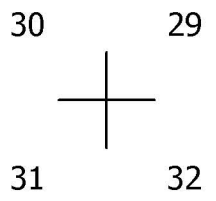
REVISED ON
5-6-96

21 12 29

SEE MAP 21 12 00



SEE MAP 21 12 00

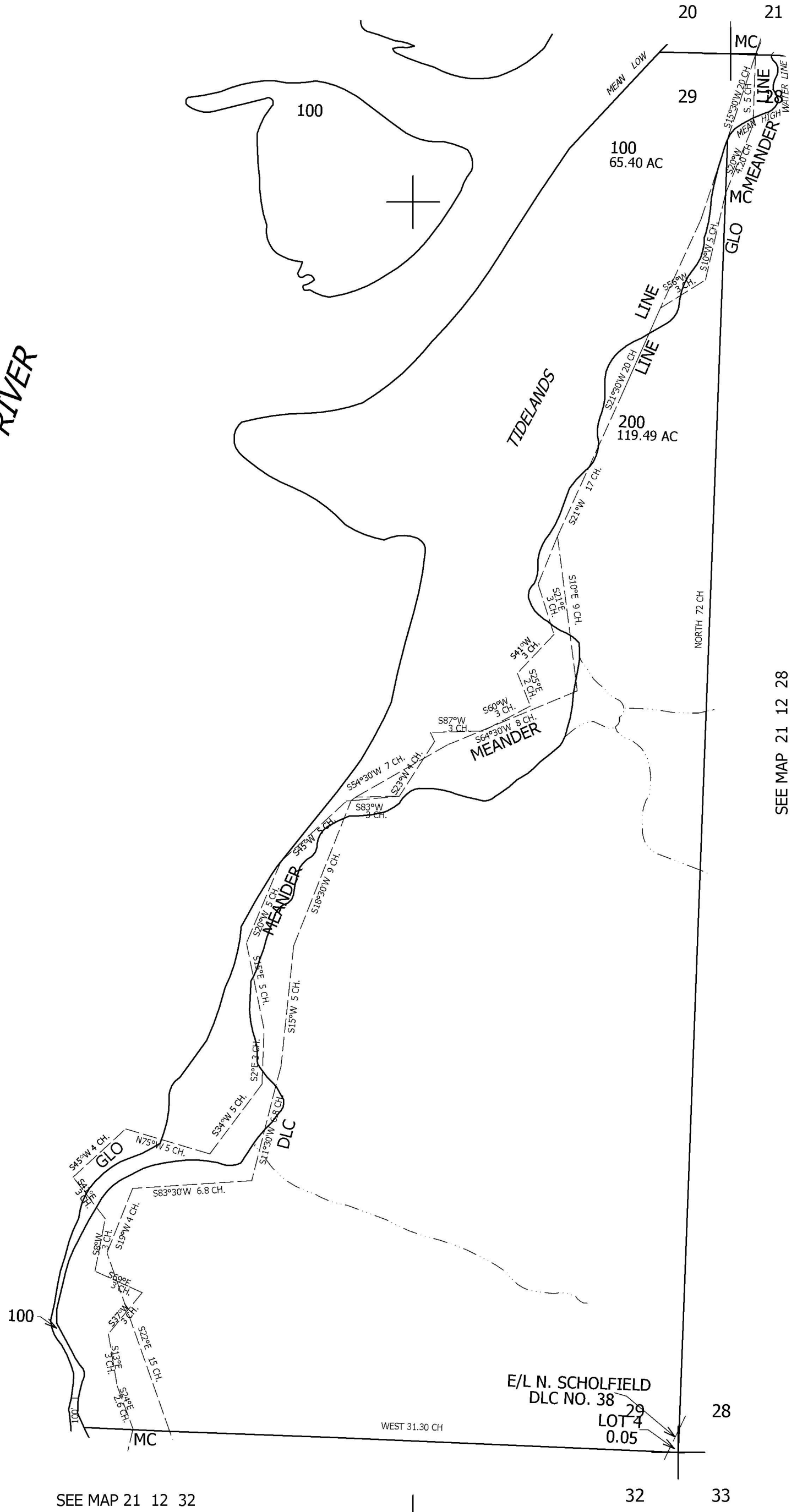


SEE MAP 21 12 32



CANCELLED NO'S
200M1

SEE MAP 21 12 28



766,000

21 12 29