

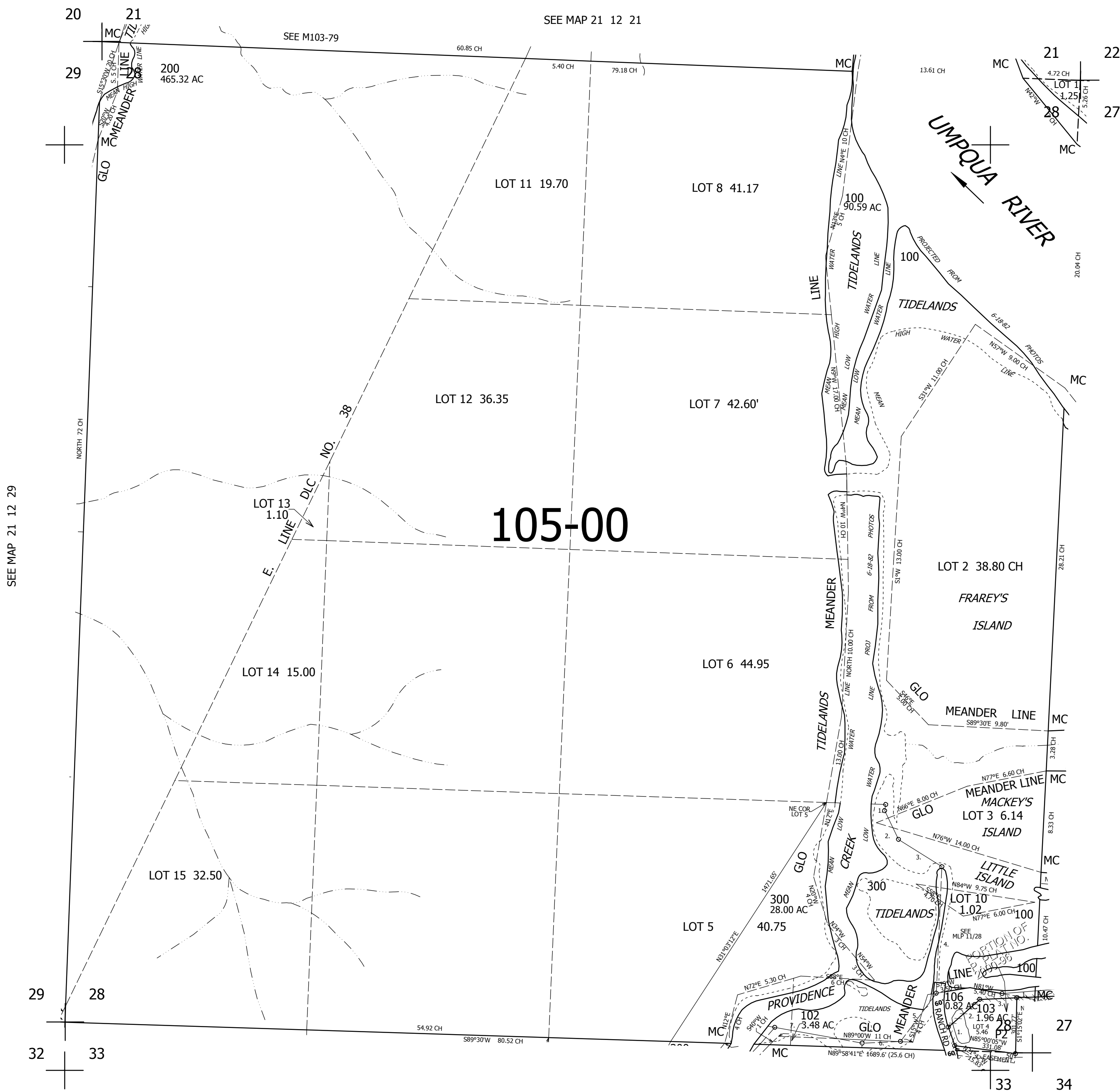
THIS MAP WAS PREPARED FOR ASSESSMENT PURPOSE ONLY.

SEC.28 T.21S. R.12W. W.M.
DOUGLAS COUNTY

1" = 400'

REVISED ON
2-26-18

21 12 28



CANCELLED NO'S
100 104 105
200M1

SEE MAP 21 12 27

PARCEL 300
1. S4°14'11"W 37.86'
2. S29°44'42"E 161.25'
3. S71°33'54"E 252.98'
4. S3°21'59"W 681.18'
5. S32°44'07"W 332.87'
6. S84°17'22"W 201'
7. N83°09'26"W 503.59'

PARCEL 103
1. N21°42'W 106.17'
2. N46°06'08"E 226.36'
3. N85°00'49"E 200.01'

PARCEL 106
P.O.B. NORTH 315.88' &
WEST 160.84' FR SW COR SEC 28
1. N82°50'31"E 233.03'

766,000

SEE MAP 21 12 33

21 12 28