

THIS MAP WAS PREPARED FOR ASSESSMENT PURPOSE ONLY.

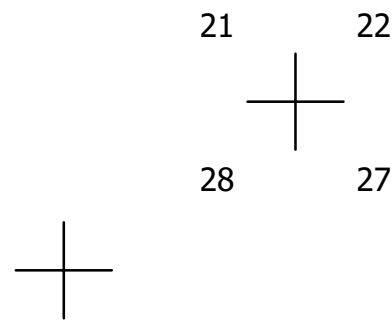
SEC.27 T.21S. R.12W. W.M. DOUGLAS COUNTY 1"=400'

REVISED ON 10-15-19

21 12 27

SEE MAP 21 12 22

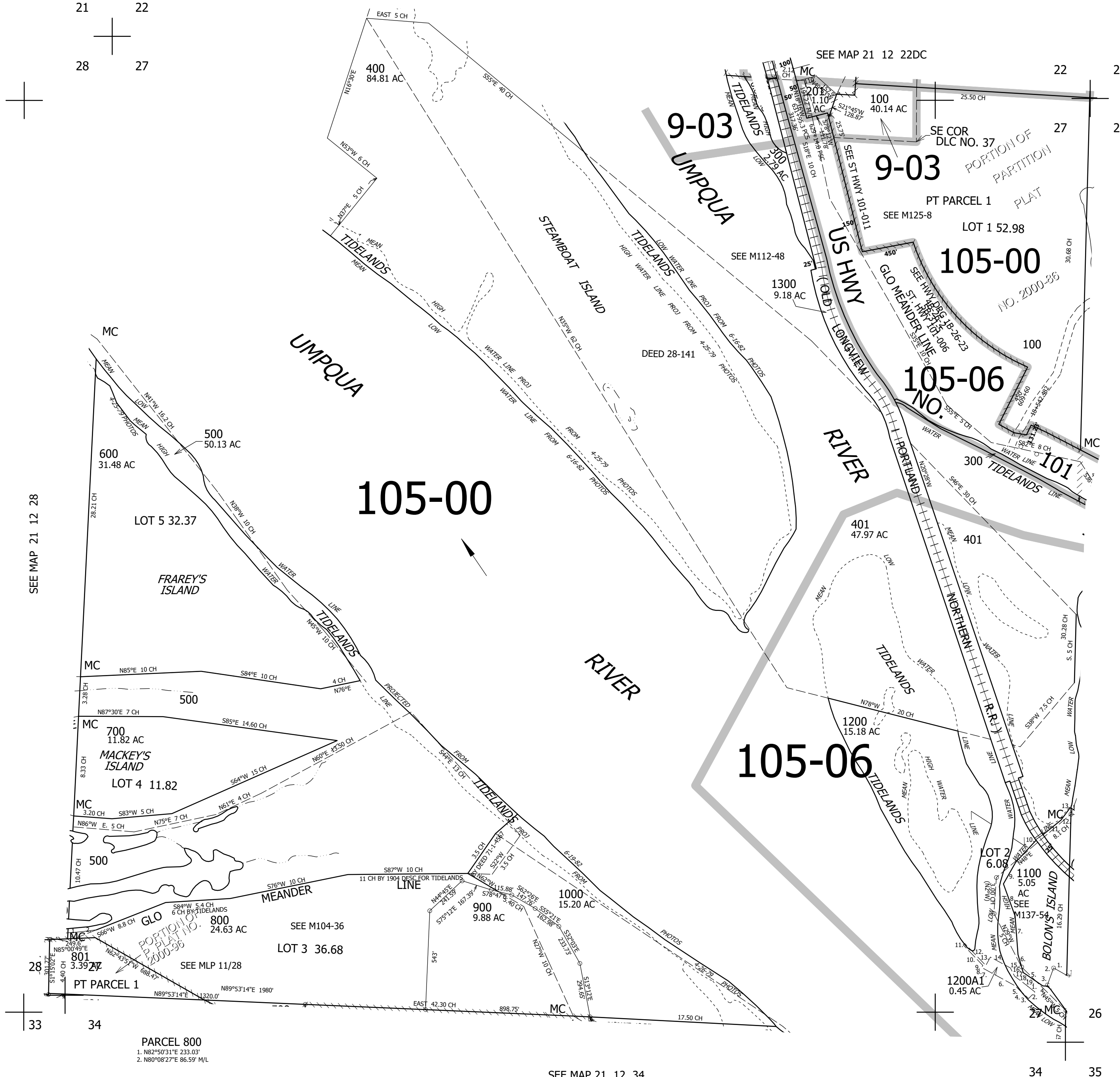
SEE MAP 21 12 22DC



SEE MAP 21 12 28

CANCELLED NO'S 100M1 200 200M1 300M1 900M1 501

SEE MAP 21 12 26



PARCEL 1100

1. N63°14'36"W 87.2'
2. S17°10'24"W 98.8'
3. S17°10'24"W 7' M/L
4. WEST 23'
5. N58°45'W 130'
6. N18°45'W 103'
7. N7°20'W 212'
8. N22°45'W 187'
9. N26°35'E 136'
10. N40°E 164'
11. N48°10'E 176'
12. N33°35'E 85'
13. S63°30'E 57'

PARCEL 1200A1

- P.O.B. BEARS N2°42'11"W 2892.19'
FR 1/4 COR SECS 34 & 45
1. S51°28'29"W 50'
 2. S43°57'16"W 50'
 3. N45°52'43"W 43.6'
 4. N5°40'24"W 11.09'
 5. N44°17'47"W 45.66'
 6. N61°20'15"W 196'
 7. N74°57'54"W 3.67'
 8. N51°24'47"W 12.14'
 9. N36°15'59"E 11.38'
 10. N43°49'24"W 156'
 11. N46°10'36"E 12'
 12. S43°49'24"E 166.92'
 13. N28°39'45"E 52.34'
 14. S61°20'15"E 124.4'
 15. S27°39'54"E 24.67'
 16. S16°25'30"E 6.45'
 17. S31°48'17"E 21.55'
 18. S53°03'02"E 57.08'
 19. S51°28'29"E 32.35'

766,000

SEE MAP 21 12 34

3,968,000

21 12 27