

THIS MAP WAS PREPARED FOR ASSESSMENT PURPOSE ONLY.

Upper Left:
124°6'49"W 43°44'1"N
3966432E 773906N ft

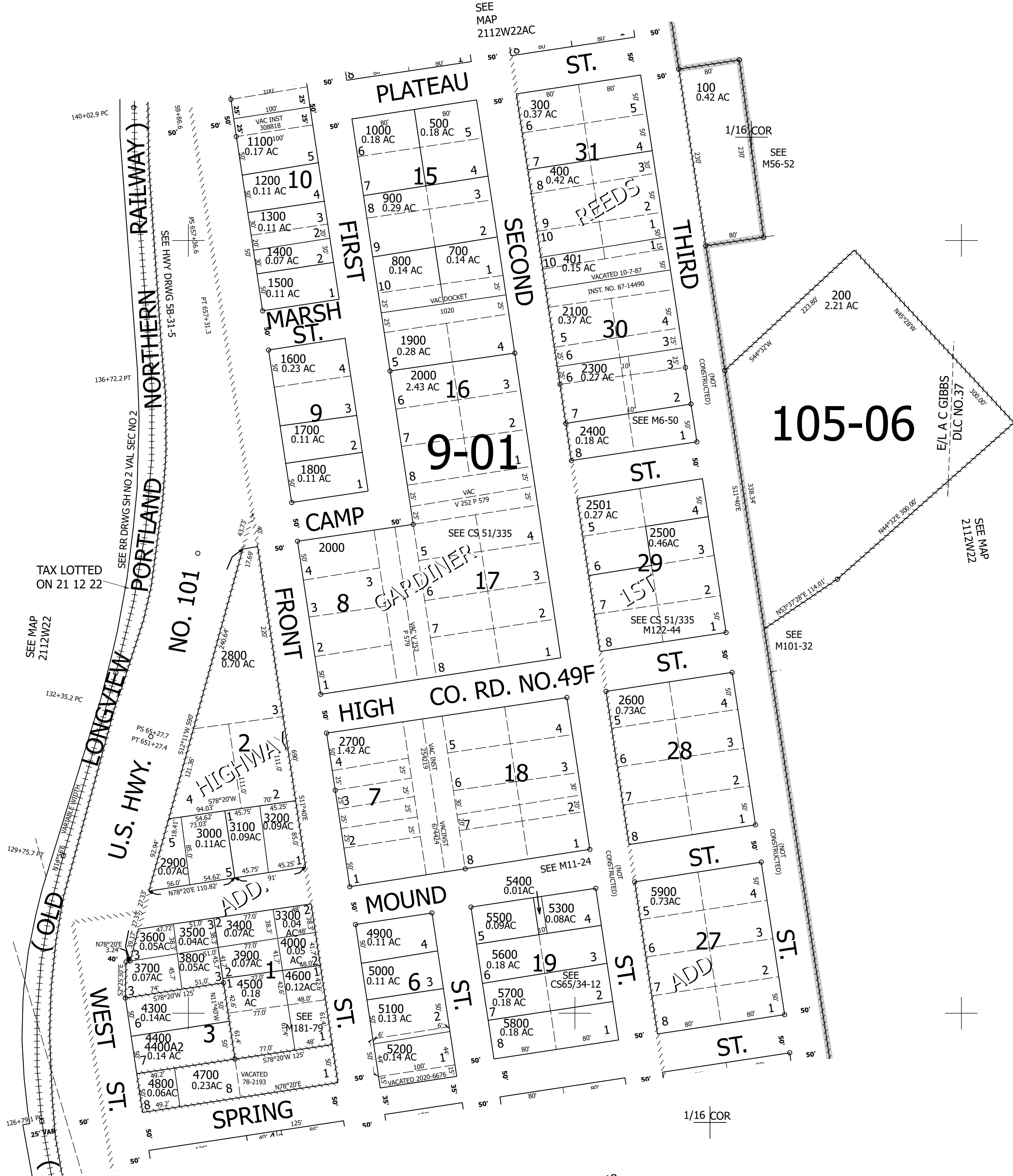
NW1/4 SE1/4 SEC.22 T.21S. R.12W. W.M.
DOUGLAS COUNTY
1" = 100'

Date Exported 2024-12-10

211222DB

CANCELLED NOS:
4400A1 4200 2600M1
5300M1 5900M1 2000A1
2200 4100 600

EN SEC



SEE MAP 2112W22

SEE MAP 2112W22

SEE MAP 2112W22DC

211222DB

Lower Right:
124°6'22"W 43°43'45"N
3968407E 772167N ft