

THIS MAP WAS PREPARED FOR ASSESSMENT PURPOSE ONLY.

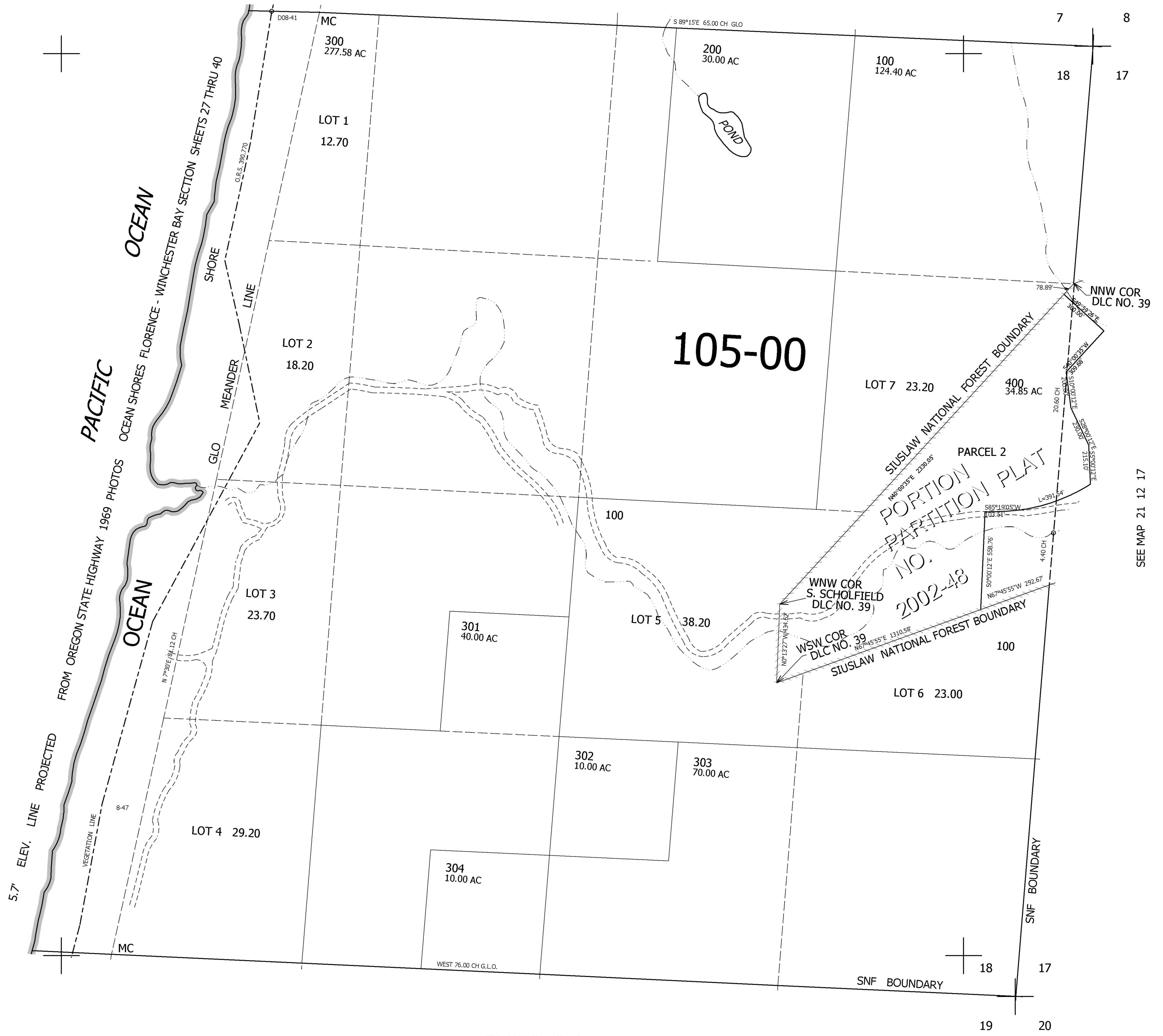
SEC.18 T.21S. R.12W. W.M.
DOUGLAS COUNTY

1" = 400'

REVISED ON
11-27-02

21 12 18

SEE MAP 21 12 7



SEE MAP 21 12 17

SEE MAP 21 12 19

3,953,000

777,000

21 12 18