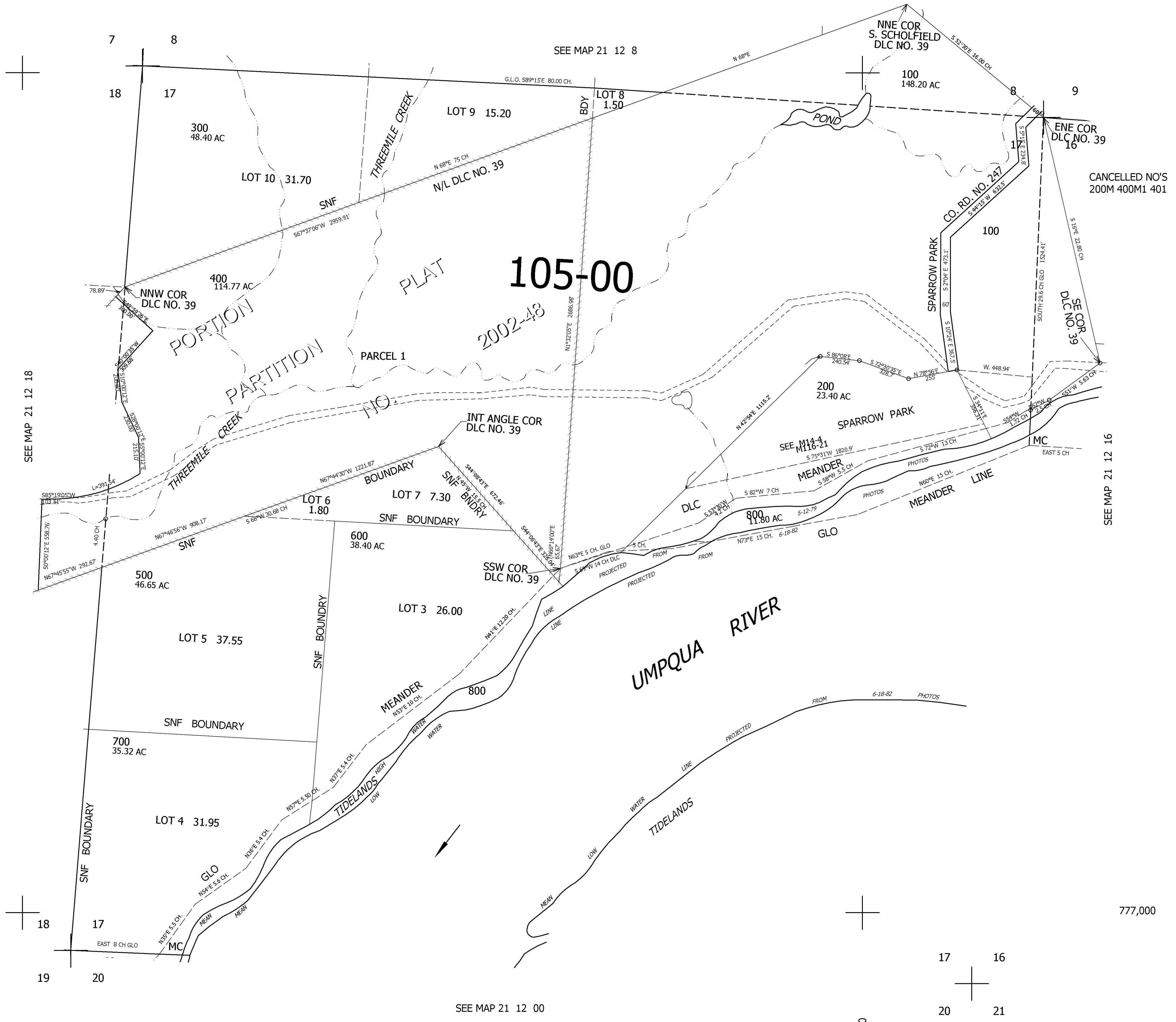


THIS MAP WAS PREPARED FOR ASSESSMENT PURPOSE ONLY.

SEC.17 T.21S. R.12W. W.M.
DOUGLAS COUNTY
1" = 400'

REVISED ON
11-27-02

21 12 17



SEE MAP 21 12 18

SEE MAP 21 12 8

SEE MAP 21 12 16

SEE MAP 21 12 00

777,000

3,958,000

21 12 17