

THIS MAP WAS PREPARED FOR ASSESSMENT PURPOSE ONLY.

Upper Left:
124°7'46"W 43°45'20"N
3962633E 782054N ft

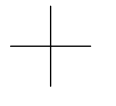
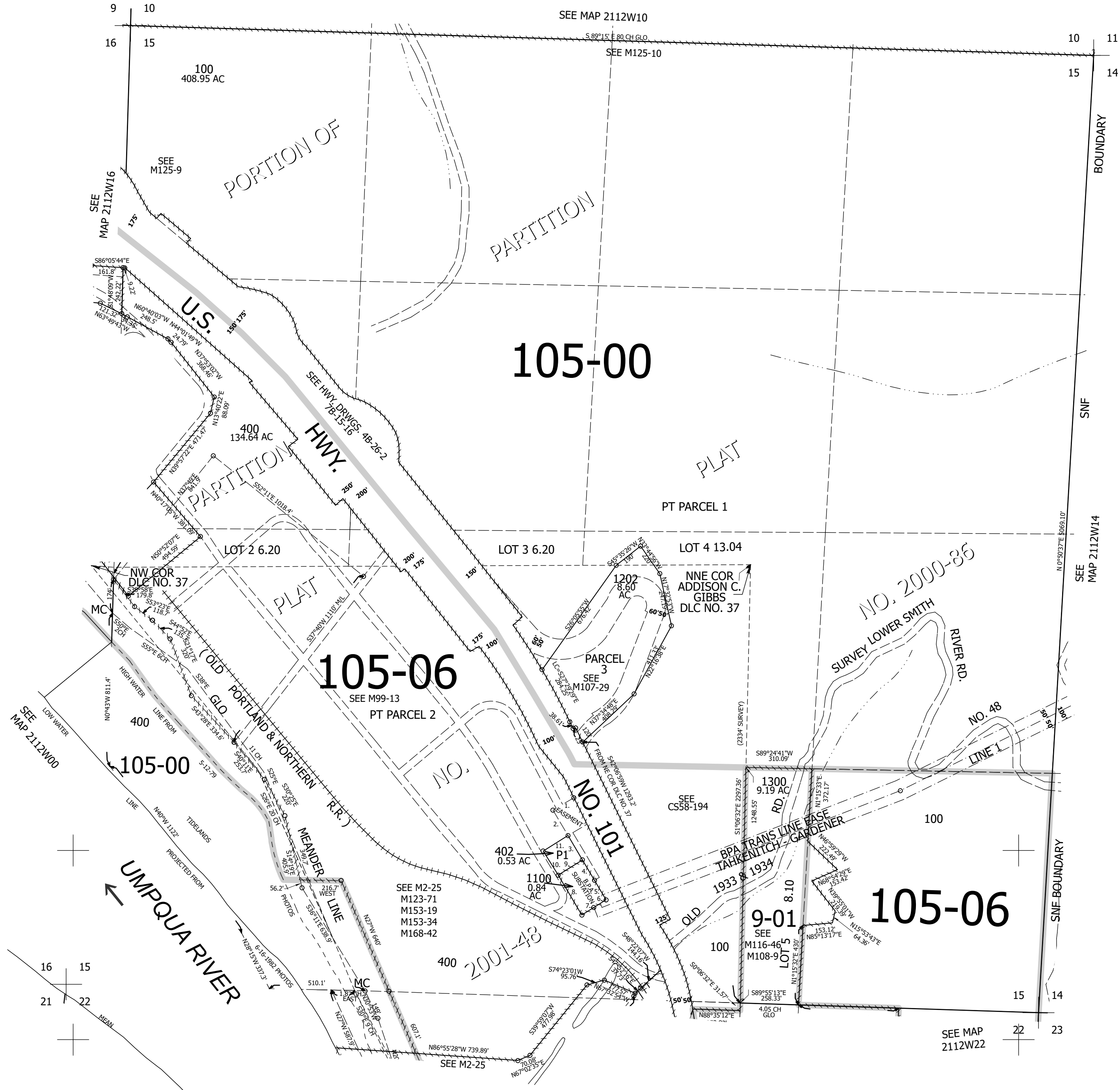
SEC.15 T.21S. R.12W. W.M.
DOUGLAS COUNTY
1" = 400'

Date Exported 2025-12-10

211215

- PP 2001-48
- 1. S56°50'14"W 128.8'
- 2. S33°13'27"E 156.15'
- 3. S33°12'10"E 150.04'
- 4. S33°12'10"E 125'
- 5. (S30°17'E) 120.1'
- 6. (S58°19'58"E) 70.02'
- 7. (S58°19'58"E) 75'
- 8. (N31°40'02"W 245'
- 9. N55°24'43"E 151.1'
- 10. N34°35'12"W 150'
- 11. N55°24'48"E 154.72'

- CANCELLED NOS:
201 400A1 400A2
300 1203 1201M1
500M1 600M1 700M1
900M1 1000M1 800M1
501 401 1001
100M1 200 200M1
1200 1200M1 1201
101M1 600 700
800 900 500 1000
403 404 101



16 15
21 22
MEAN

211215

Lower Right:
124°5'55"W 43°44'14"N
3970482E 775098N ft