

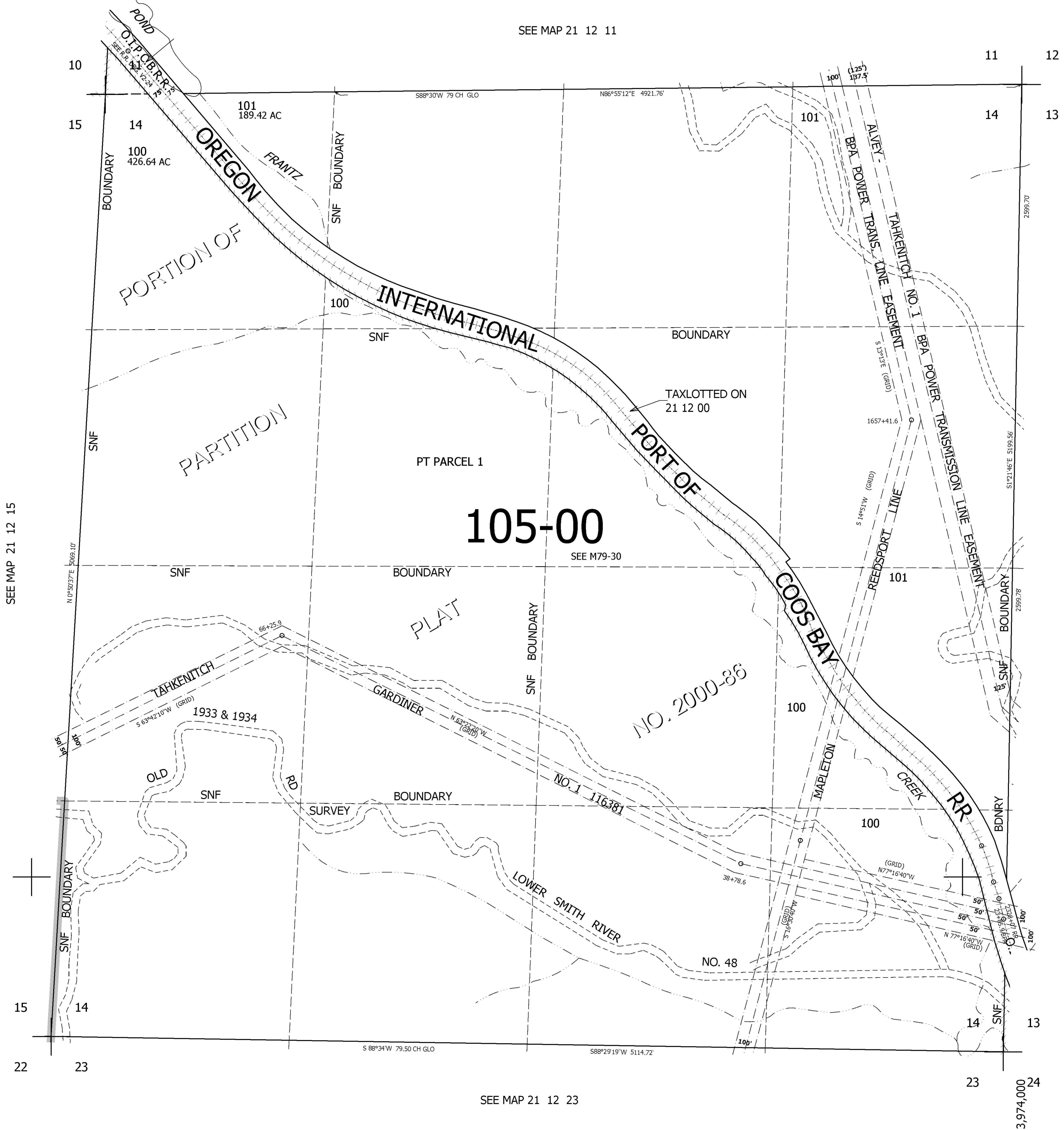
THIS MAP WAS PREPARED FOR ASSESSMENT PURPOSE ONLY.

SEC.14 T.21S. R.12W. W.M.  
DOUGLAS COUNTY

1" = 400'

REVISED ON  
7-15-10

21 12 14



CANCELLED NO'S  
200 300 300M1  
400 400M1 100M1  
100M2 100M3

SEE MAP 21 12 13

777,000

SEE MAP 21 12 23

21 12 14