

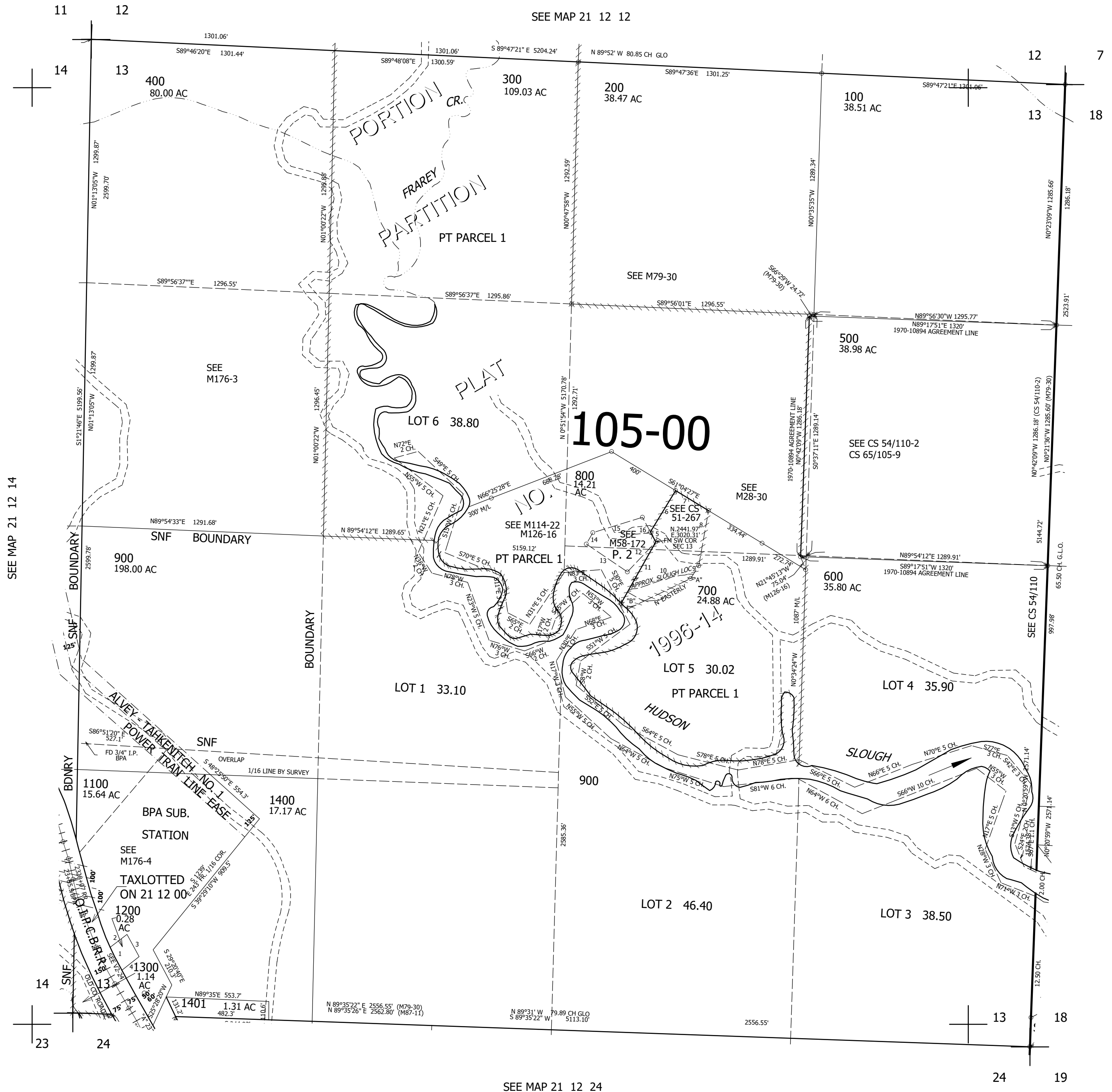
THIS MAP WAS PREPARED FOR ASSESSMENT PURPOSE ONLY.

SEC.13 T.21S. R.12W. W.M.
DOUGLAS COUNTY

REVISED ON
7-29-19

21 12 13

1" = 400'



CANCELLED NO'S
 100M1 300M1 300M3
 300M4 300M5 300M6
 300M7 700M1 700M4
 700M5 700M6 700M7
 800M1 800M4 800M5
 800M6 800M7 900M1
 1000 300M2 303
 501 601

SEE MAP 21 11 18

PARCELS 700,
 800, & 1200

1. N28°37'W 135'
2. N39°53'E 108'
3. S25°27'30"E 137.77'
4. S39°39'10"W 100'
5. N30°28'W 60.69'
6. N29°32'E 258.71'
7. S60°28'E 206.51'
8. S4°27'W 255.47'
9. S29°32'W 127.35'
10. "ALONG SLOUGH"
11. N29°32'E 282.55'
12. S29°32'W 225'
13. N60°28'W 265'
14. N29°32'E 70'
15. N59°58'E 272.38'
16. S28°18'E 150'

776,000

3,979,000

21 12 13