

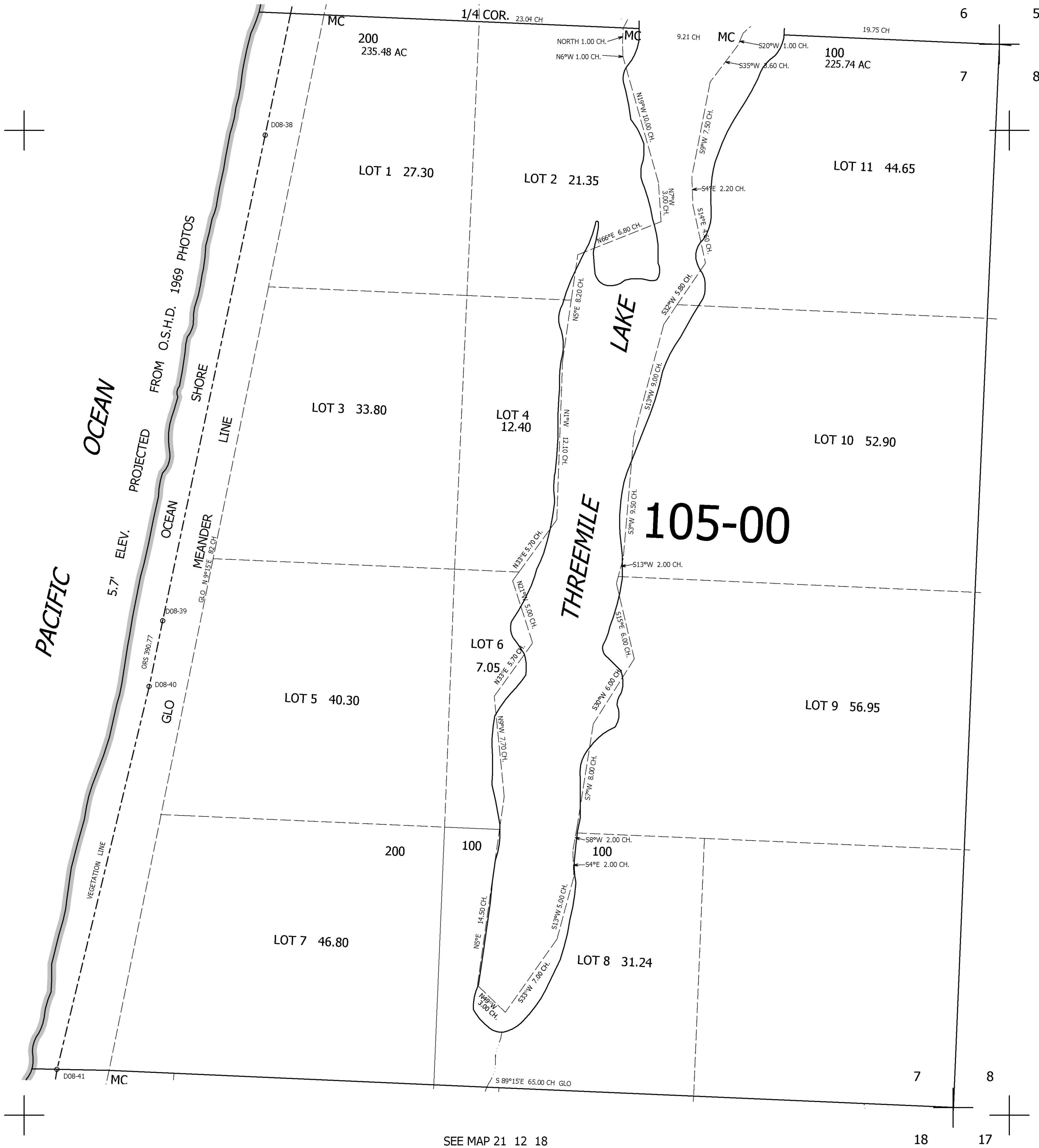
THIS MAP WAS PREPARED FOR ASSESSMENT PURPOSE ONLY.

SEC.7 T.21S. R.12W. W.M.  
DOUGLAS COUNTY  
1" = 400'

REVISED ON

21 12 7

SEE MAP 21 12 6



CANCELLED NO'S

SEE MAP 21 12 8

782,000

SEE MAP 21 12 18

3,954,000

21 12 7