

THIS MAP WAS PREPARED FOR ASSESSMENT PURPOSE ONLY.

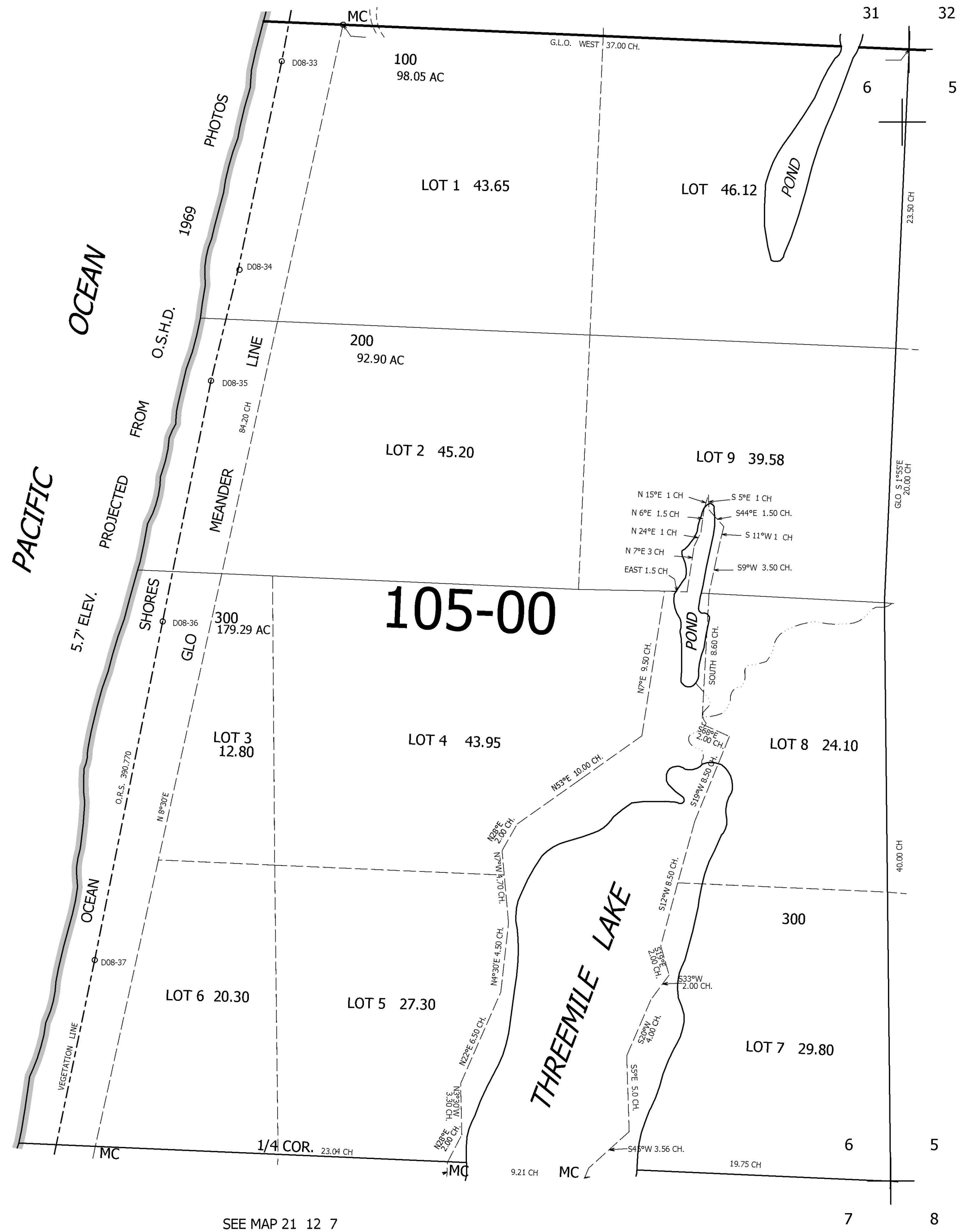
SEC.6 T.21S. R.12W. W.M.
DOUGLAS COUNTY

1" = 400'

REVISED ON

21 12 6

SEE MAP 20 12 31



CANCELLED NO'S

SEE MAP 21 12 5

787,000

21 12 6

3,954,000